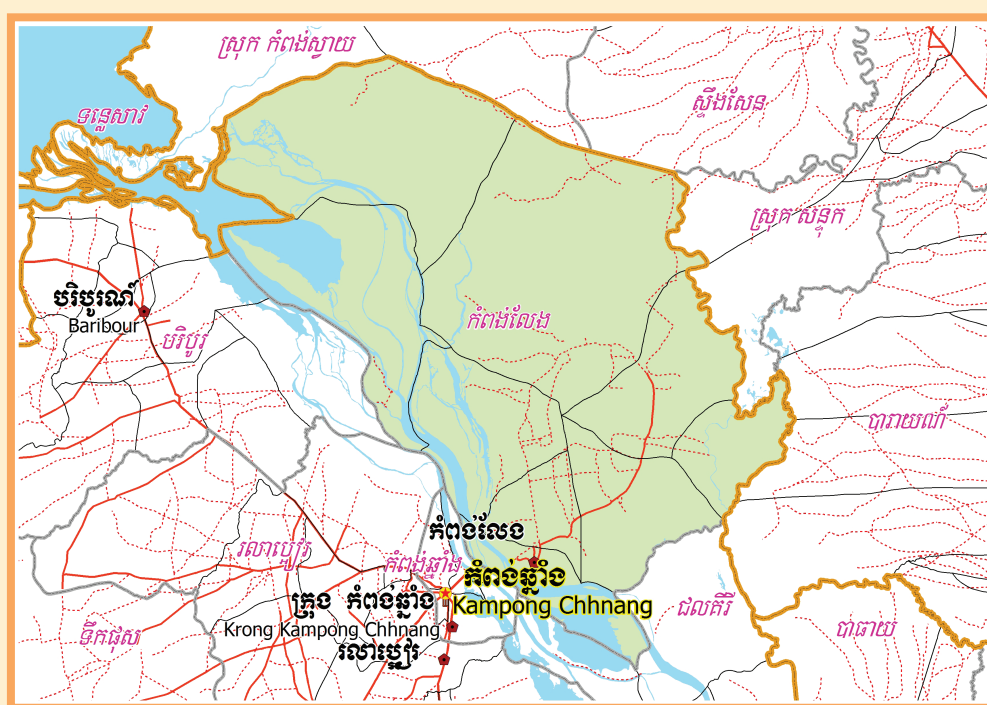


KINGDOM OF CAMBODIA
Nation Religion King



**National Committee for Sub-National
Democratic Development (NCDD)**



KAMPONG LEAENG DISTRICT DATA BOOK 2009

District Code Nr: 404

Kampong Chhnang Province

October 2009

Kampong Leaeng District Data Book 2009

District Code Nr: 404

Kampong Chhnang Province

Table of Contents

List of Abbreviations	i
Glossary.....	ii
Preface	vi
Introduction	vii
SECTION A: GEOGRAPHY	1
1 Administration and Infrastructure.....	3
2 Land Use and Natural Resources.....	5
3 Geography	7
3.1 Land Area	7
3.2 Distances between Offices	7
SECTION B: DISTRICT PROFILE	9
1 General Information	11
1.1 Population of the District.....	11
1.2 Occupations	12
1.3 Property	14
2 Infrastructure and Economy.....	16
2.1 Roads in meters over 3 years.....	16
2.2 Sewerage Pipes in meters over 3 years.....	16
2.3 Drainage and Bridges	16
2.4 Services in the District	16
2.5 Agriculture.....	17
3 Social Aspects	28
3.1 Education	28
3.2 Health.....	34
3.3 Water and Sanitation	35
3.4 Vulnerable groups.....	39
3.5 Migration	41
4 Natural Resources and Environment (NRE).....	42
4.1 Families involved with NRE issues over 3 years	42
4.2 Percentage of Families involved with Natural Resource issues, by Commune, for 2008	42
4.3 Percentage Houses with access to Garbage collection and Families affected by environmental Pollution, by Commune, for 2008	43
4.4 Percentage Families using chemical Fertilizer and chemical Pesticides, by Commune, for 2008 ..	43
5 Administration and Security	43

5.1	Birth Registration across 3 years.....	43
5.2	Number of unregistered Infants born in 2008, by Commune	43
5.3	Registered criminal Cases over 3 years	44
5.4	Registered criminal Cases per 10,000 people, by Commune, for 2008.....	44
5.5	Number of registered Land Disputes, by Commune, in 2008	44
6	Gender	44
6.1	Registered Domestic Violence over 3 years.....	44
6.2	Percentage of registered cases of Families experiencing domestic Violence, by Commune, in 2008	45
6.3	Women's involvement over 3 years.....	45
6.4	Percentage of Female Participants in Civil Society and of 18-60 year women with uncertain Jobs, by Commune, in 2008	45
6.5	Female-headed Households over 3 years.....	45
6.6	Percentage female-headed Households and with Children of less than 5 years old, by Commune, in 2008	46
7	Indigenous People in the District	46
7.1	Ethnic Minorities in the District over 3 years.....	46
7.2	Other Minorities in the District over 3 years.....	46
	SECTION C: PLANS AND PROJECTS	47
8	Priorities and Plans	49
8.1	Priorities of Commune Councils for 2009 in the District by Sector	49
8.2	Temporary Agreements by Commune, for 2009	57
8.3	Outputs, estimated and actual costs of C/S Fund Projects between 2005 and 2008, by Commune	66
8.4	Total Expenditure on C/S Fund Projects by sector and commune between 2005 and 2008.....	67
8.5	Actual 2009 C/S Fund projects by Commune	68
9	District level Projects from 2006 to 2009	69
9.1	District Initiative Infrastructure Projects from 2006 to 2009	69
9.2	District Initiative Service Projects from 2006 to 2009	70
9.3	Inter Commune Council Projects in 2008 and 2009	72
9.4	Other Projects in 2008 and 2009	74
	SECTION D: SERVICES AND ORGANIZATIONS	75
10	Infrastructure.....	77
10.1	Length of and Expenditure on Roads in 2008, by District	77
10.2	Scale of and Expenditure on Irrigation in 2008, by District.....	77
10.3	Power Supply in 2008, by District	78
11	Health Facilities.....	79

11.1 Health Facilities in the Province, by Operational District.....	79
11.2 Health Facilities and Staff in the province, by Operational District.....	79
11.3 Deliveries in 2007 in the Province, by Operational District.....	81
12 Education	82
12.1 Schools, Classes, Students, Staff, for for all levels, for 2007/2008 by District.....	82
12.2 Characteristics of Schools and School Principals for 2007/2008 by Commune	82
12.3 Enrolment by Level of Education, 2006/2007 by Commune	83
12.4 Enrolment by Level of Education, 2007/2008 by Commune	83
12.5 Aspects of Enrolment for 2007/2008 by Commune.....	84
12.6 School Buildings for all schools in the District for 2007/2008, by Commune	84
12.7 Conditions of Classrooms and Existence of Separate School Office and Library, by Commune	85
12.8 Community Participation and Financing across all schools in the District for 2007/2008 by Commune	85
12.9 Percentage Student Flow Rates and Graduation by level 2006/2007, by Commune	86
13 Staff and Resources at the District	87
13.1 District Councilors elected in 2009	87
13.2 Committees of the Council.....	87
13.3 Board of Governors.....	88
13.4 Offices under Sala Krong, Sala Srok and Sala Khan	88
13.5 Municipality/District/Khan line offices.....	88
13.6 Properties and Equipment of District Administration	89
13.7 Registered Revenue of the District Administration in 2008	89
13.8 Services in the District	90
13.9 Civil Society Organizations active in the District.....	90
13.10 Private Sector Organizations.....	91
SECTION E: POVERTY DATA	93
14 Data on Poverty	95
14.1 Predicted Poverty Rates for 2009, by commune	95
14.2 Poverty data from survey.....	95

List of Abbreviations

#	Number
AGR	Agriculture
BR	Birth Registration
C. Pilot	Piloted Commune
C/S	Commune / Sangkat
CBO	Community-Based Organization
CDB	Commune Database
CDPD	Commune Development and Planning Database
CIP	Commune Investment plan
CLTS	Community Led-Total Sanitation
Comm.	Commune
Com Cov	Commune Covered
CPA	Complementary Package of Activities
CPS	Community Preschool
CCWC	Commune Committees for Women and Children
DANIDA	Danish International Development Agency
DDLG	Democratic Development and Local Governance Project (EC-UNDP)
DFID	Department For International Development (UK)
DIP	District Initiative Project
DIS	District Information System
District PDRD	District Office of Rural Development
District WP	District Work Plan
DIW	District Integration Workshop
DoLA	Department of Local Administration
Dr	Doctor
DWRM	District Office of Water Resource and Meterology
ECD	Early Childhood education (part of PE)
EMIS	Education Management Information System
Event IC	Celebration of International Days
FDH	Former District Hospital
GTZ	German Society for Technical Cooperation (Gesellschaft für Technische Zusammenarbeit GmbH)
Ha	Hectare
HC	Health Center
HC (NB)	Health Center (no building)
HH	Headed Household
HSI	Intervention for Health
HP	Health Post
HW	Hand Washing
ICC	Inter Commune Council
IFAD	International Fund for Agricultural Development
IND	Industry
Inter-commune	Inter-Commune Project Management Committee or Inter-commune project
IO	International Organization
LASED	Land Allocation for Socio-Economic Development
LGCR	Local Governance for Children's Rights
M&E	Monitoring and Evaluation
MA	Medical Assistant
MoEYS	Ministry of Education, Youth and Sports
MoH	Ministry of Health

MoP	Ministry of Planning
MPA	Minimum Package of Activities
MW1	Primary Midwives
MW2	Secondary Midwives
n/a	Not available
NCD	National Contracts Database
NCDD	National Committee for Sub-National Democratic Development
NGO	Non-Governmental Organization
NRML	Natural Resources Management and Livelihood
NU1	Primary Nurse
NU2	Secondary Nurse
OD	Operational District
ODF	Open Defecation Free
Ope. Costs	Operational Costs
Others	Other Staff
PBW	Public Works
PDoEYS	Provincial Department of Education, Youth and Sport
PDRD	Provincial Department of Rural Development
PDWRM	Provincial Department of Water Resource and Meteorology
PE	Parenting Education
PHAST	Participatory Hygiene and Sanitation Transformation
PHD	Provincial Health Department
PID	Project Information Database
PMC	Project Management Committee
Pop 04-05	Population Covered 2004 or 2005
PSDD	Project to Support Democratic Development through Decentralization and Deconcentration
RRD	Rural Road Development
RH	Referral Hospital
RILGP	Rural Investment and Local Governance Project
RPRP	Rural Poverty Reduction Program
RuLIP	Rural Livelihoods Improvement Program
SIDA	Swedish International Development Cooperation Agency
SPPA	Senior Provincial Program Advisor
TBA	Traditional Birth Attendant
UNDP	United Nations Development Project
UNICEF	United Nations Children's Fund
Vil	Village
Vil Cov	Village Covered
VIL-HC	Distance from Village to Health Center
WASH	Water, Sanitation and Hygiene
WRM	Water Resource and Meteorology

Glossary

C/S Fund: The Commune/Sangkat Fund is established and managed by the Government of Cambodia to provide financial support for development projects and administrative costs of Commune/Sangkat Councils. The amount is determined as a percentage of the National Budget (for 2009: 2.8% over the 2008 budget) and is expected to increase gradually over the years. The total 2009 budget under this fund is \$ 27,643,902 (of which \$ 19,272,170 is for Development Projects and \$ 8,371,731 for Administration). Under the Rural Investment and Local Governance Project the World Bank currently reimburses the costs of development projects if these meet the Bank's criteria.

CDB: the Commune Data Base is a national database, compiled by the Ministry of Planning, on the basis of detailed questionnaires, completed at village and commune level, which are then sent to the Departments of Planning for data entry. The most recent round of data collection took place at the end of 2008 (and is reflected in the District Data Books). Commune, District and Provincial Profiles can be generated from this database and should be available from provincial Departments of Planning.

CDPD: the Commune Development and Planning Database is a database maintained by Departments of Planning and Ministry of Planning, recording proposed activities as determined and prioritized by Commune and Sangkat Councils; the Temporary Agreements between these councils and supporting agencies, as decided at District Integration Workshops and details on projects that actually take place at commune, district and provincial levels.

CIP: The Commune Investment Plan is a rolling three-year plan, developed and decided by the Commune or Sangkat Council. It sets priorities and identifies the projects proposed for the years to come.

Commune and Sangkat (C/S): the Communes (in rural areas) and Sangkats (in urban areas) are the lowest and smallest units of local government. Councils are elected directly, once in five years, for the 1417 Communes and 204 Sangkats. In the C/S there are 14,119 villages, which have Village Chiefs, but don't constitute a formal level of local government.

DIP: the District Initiative Project is jointly supported by the MDLF (Multi-Donor Livelihood Facility (supporting the NRM&L Program)) and PSDD. In 2009 it covers 106 districts, 60% of the total in the country, with a budget of \$ 3.2 million. It is focused on capacity development in planning, democratic development, public competitive procurement, financial management and service delivery.

DIS: The District Information System is a national database maintained by NCDD, recording resources, staff, revenue, infrastructure and equipment available in the 193 Districts and Khans throughout the country. The last update took place in July 2009.

District, Municipality and Khan constitutes the third level of Government in Cambodia. There are 159 rural Districts, 26 Municipalities and 8 Khans of Phnom Penh Capital. They all have Councils which were, for the first time, elected in May 2009, by the Commune/Sangkat Councilors. These councils have a mandate for 5 years.

DIW: District Integration Workshops are held between July and October, to bring Commune/Sangkat Councils, looking for support for their projects, together with the governmental and non-governmental agencies that may provide support.

ICC: Inter Communes Council projects are executed in 10 provinces under the Democratic and Decentralized Local Governance Project (DDLG). This five year project (2006-2010) is executed by Ministry of Interior and funded by the European Commission and UNDP. The project focuses on improving dialogue partnership and accountability; create a network of Commune Councils at the provincial and national level and support and contribute to local area development for poverty reduction. The work under the ICC component supports investments and services formulated through inter-commune dialogue and planning.

MEDiCAM: A non-profit and non-partisan membership organization for NGOs active in Cambodia's health sector. It is the primary networking agency for health-related NGOs.

NCDD: the National Committee for sub-National Democratic Development is the inter-ministerial body charged with the implementation of the Organic Law (a key legislative document, adopted in 2008, outlining the envisaged decentralization). NCDD also channels substantial financial assistance by a number of Development Partners, to projects and programs at various levels. This amounted to over \$ 91 million in 2008. More information at: www.ncdd.gov.kh. This website also provides access to reports, manuals, legal documents, details on projects and more.

OD: the Operational Districts are the districts as defined and used by the Ministry of Health. These do not coincide with the 193 (Administrative) Districts and Khans, as used by all other RGC agencies. The Operational Districts are usually larger, and so there are 77 Operational Districts against 193 administrative Districts and Khans. However they do fit within the boundaries of administrative provinces.

PID: The Project Information Database is the database maintained by NCDD at national and sub national level, to follow all aspects of projects by Commune and Sangkat Councils, including the C/S Fund projects

Provincial Investment Fund (PIF)

The Provincial Investment Fund is allocated to all Provinces and Municipalities according to a population based formula. Part of the fund is earmarked for support to planning activities of the Provincial / Municipal Department of Planning; and to gender mainstreaming activities of the Provincial Department of Women's Affairs. The remaining "un-earmarked PIF" is allocated by PRDC to sectoral technical departments against established criteria and in response to proposals with prioritisation taking into account: priorities formulated by the CS Councils and aggregated by District into District Priority Activities Matrices (DPAM); alignment with national planning and poverty alleviation criteria, complementarity with other planned activities; and performance of the Department concerned in implementation of activities in previous years. With this provisional allocation, the Department then programs activities through the District Integration Process. Finally, the agreed activities, plus support costs amounting to no more than 25% of the total, are included in a sub-contract signed between PRDC and the Department, pursuant to the overall PSDD contract signed between NCDD and PRDC. Total budget has been around \$ 2 million per year.

Province: the 23 Provinces and Phnom Penh Capital City represent the 2nd layer of government. They vary in size, from very small, like Kep (approx. 36,000 people) and Pailin (approx. 70,000 people), or large but with small populations, like Mondulkiri (over 60,000 people), and Ratanakiri (over 153,000) to densely populated and large, like Kampong Cham (over 1.7 million people) and Kandal (approx. 1.4 Million people).

PSDD: the Project to Support Democratic Development through Decentralization and Deconcentration is funded by DFID (UK), SIDA (Sweden) and UNDP and runs from 2006 till the end of 2010 (including a one year extension). Annual budgets range from \$ 11 million to over \$ 18 million. The project provides core technical support to NCDD and to the provinces, financial support to the C/S Fund, District Initiative, Provincial Investment Fund and capacity building support through training, studies and advisory services.

RILGP: The Rural Investment and Local Governance Project is a World Bank funded project that provides substantial support to C/S Fund projects and to developing the required infrastructure, policies, systems and skills. It started in 2003 with a Loan for \$ 22 million for 2003-2007 and was then extended with a Grant of \$ 36 million for the period of 2007-2010. Discussions about a possible RILGP 2 are taking place between RGC and the World Bank.

RPRP: the Rural Poverty Reduction Project is a seven year project from 2004 till 2010, funded by IFAD and UNDP and implemented through the Ministry of Agriculture, Forestry and Fishery, supported by the Ministry of Interior and facilitated by NCDD. The project is active in the provinces Prey Veng and Svay Rieng and focuses on 120,600 households below poverty line. The objective is poverty reduction with the active participation of the poor through improved livelihoods, Strengthened capacity, Sustainable farming systems and natural resource management, new and/or rehabilitated infrastructure development, increase accessibly to technology, services and markets for their economic and social development.

RULIP: the Rural Livelihoods Improvement Project is implemented by the Ministry of Agriculture Forestry and Fisheries (MAFF)' Project Support Unit- PSU, with the NCDD playing the role of cooperating agency. Funded by IFAD and UNDP, the project will run till 2014. The target group consists of poor households who have little or even no land, few livestock or other assets and often many dependents. The main goal of the project is to directly or indirectly improve the livelihood systems, food security and incomes of a total of 33,900 rural poor, ethnic minority and female headed households in targeted village of Kratie, Preah Vihear and Ratanakiri provinces in a sustainable manner.

Seth Koma: The UNICEF funded Seth Koma program focuses on measurable action for children and women. During 2006 -2010 it is implemented in six provinces. Government and UNICEF pursue a set of inter-related goals, addressing critical stages of the life cycle of the child: a) Mothers have safe pregnancies and deliveries and healthy newborns; b) best possible start in life of infant; c) Children enter schools at the right age of six years; d) Children are protected from exploitation, abuse, violence, discrimination and other risks; and e) Youth and adolescents acquire life skills, express their views, participate in the decisions.

Preface

The Government of Cambodia attaches great importance to optimal use of scarce resources and to participatory planning and management at all levels. The Organic Law which was adopted in 2008 provides the legal context for further steps towards improving and decentralizing planning, management and monitoring, and towards greater accountability and transparency of institutions at sub-national levels.

The Government has established elected Councils at the sub-national levels, and we will progressively give them the responsibilities, together with the human and financial resources, to deliver a wide range of public services. They will be more democratic, more efficient, more transparent and accountable, better at addressing gender and other inequalities, and at fighting corruption. We recognize that development does not come from government alone; it needs the involvement of citizens, civil society and the private sector, and the new system will facilitate this.

A central element in this process is the availability of information on any aspect of development to all concerned parties. The newly elected Councillors at District and Khan level, line departments operating at these levels, but also NGOs, Development Partners, Commune Councillors and citizens throughout Cambodia need information on problems and requirements, resources and opportunities, services and agencies, plans and projects. They will need such information to better understand the present situation, set targets for the future, monitor progress, know what others are doing and to apply resources wisely and this is the reason the District Data books will be so valuable.

The District Data Books are a major step towards full transparency and towards informed planning and decision-making. They provide all available data at District, Khan, Commune and Sangkat level in easily accessible formats, in Khmer and English, through over 16,000 printed copies, CD-ROMs and the NCDD website.

This is the first time in Cambodia (and possibly in South East Asia) that such detailed information is made so widely available and NCDD should be commended for the hard work that has gone into this. We also thank the Ministry of Planning, which provided the detailed data of the Commune Data Base, the sectoral ministries and provincial authorities who contributed data and the Development Partners who provided financial support.

It is our sincere hope that the publication of the District Data Books will strengthen capacities, especially at district levels, for evidence-based development planning. We also hope that this information will deepen the understanding among Ministries, Provincial Authorities, Development Partners, NGOs and research agencies of the realities at commune and district levels.

We call upon all to use and distribute this information, complement or correct where appropriate and to contribute new data in the years to come.

Sar KHENG

Deputy Prime Minister, Minister of Interior and Chairman of NCDD

Introduction

Purpose

The purpose of the District Data Books is to bring together information on any aspect of life and development of Districts, Khans, Communes and Sangkat, together and make this widely available. The primary targets are the newly elected District Councilors, district level line departments, provincial agencies, Development Partners and NGOs operating at this level. They need detailed knowledge on current living conditions, natural resources, infrastructure, agriculture and other economic activities, current service levels, past and planned projects and available resources.

While much information exists on many of the above aspects, it is often hard to access that information and much is lost to reports, databases and statistics that are not widely shared. Data are often only available in one language and often out-of-date, and many reports cover only one sector or region.

We found that these problems are especially acute at the district level. Now that Districts are becoming a much more significant level of local government and development planning, there is an urgent need for wide-ranging data to be used for setting base-lines, planning and prioritizing, monitoring and learning.

Approach

We have attempted to identify and compile all available statistics, reports, maps and other data at district and/or commune level. From this we have selected information that is available for all or most districts, reasonably reliable and up-to-date, sufficiently detailed and of possible interest to development planners, decision makers, agencies and citizens.

The major sources of the information in these District Data Books are:

- a) The Commune Data Base information over the years 2006 to 2009 (the most recent data were collected late last 2008), as compiled by the Ministry of Planning
- b) Detailed information directly collected from the Ministry of Health, the Ministry of Education, Youth and Sports and (for maps) the Ministry of Land Management, Urban Planning and Construction
- c) The Project Information Database (PID) at NCDD (up-to-date)
- d) The Commune Development and Planning Database (CDPD) (up to date)
- e) The District Information System (DIS) (updated per Mid 2009)
- f) Direct data collection at provincial and district level on private sector, irrigation, roads, and electricity, through provincial agencies
- g) Medical data collected from MEDiCAM
- h) The ID Poor Project – for poverty data on a number of provinces and districts
- i) NCDD's work on predictive poverty rates
- j) Specific projects for outputs, plans and budgets (Seth Koma, RILGP, RPRP and ICC)

Limitations of the data

We are fully aware that the data we collected are not always complete, consistent or correct. While we have rejected information that was wrong or very incomplete, we decided not to aim for statistical and scientific perfection, but to include information that is useful, relevant

and comprehensive. We also accepted different sources for the same data as this may encourage discussion on the quality of the respective data.

We strongly encourage anyone who notes errors or incompleteness in these data to contact us and to share their data. We hope that the next round of producing such District Data Books can draw on wider sources and more complete data.

We encourage the District Administrations, who receive these data also in digital format, not only to use these for their planning and monitoring, but also to start correcting and updating these data and to share new data with NCDD for future use.

Contents

The information in the following pages is organized in five sections:

- a) **Geographical data:** this section provides maps on infrastructure and administration and on land use and natural resources management. These maps are also provided in large format to all Districts and Khans.
- b) **District Profile:** this presents wide ranging data, covering 2006 – 2009, at district and commune level, extracted from the Commune Data Base, but edited for better understanding.
- c) **Plans and Projects:** this section presents development priorities determined by Commune and Sangkat Councils, Temporary Agreements, outputs and expenditure of major projects at Commune and District level over 2006 – 2008 and plans and budgets for 2009.
- d) **Services and Organizations:** this section provides details on key infrastructure (roads, electricity, irrigation systems) and services in health and education at district and commune level. It also provides an inventory of resources at the District Administration, NGOs operating in the district and private sector agencies active in the district.
- e) **Poverty Data:** this section provides predicted poverty rates for 2009 for all districts and communes and detailed poverty data compiled and processed by the ID Poor project for those that have been covered by this project.

The future

It is our hope that this is the start of a longer-term process. We hope that a next edition of these District Data Books will offer more comprehensive, correct and up-to-date information. We hope that the District Administrations will not only start using this information, but also improve and update it. For this they are all provided with the full data set in digital format.

We invite agencies, projects and experts to send reports, statistics and maps that could be used for a next version to us and we invite all users of the District Data Books to inform us about errors, updates and inconsistencies. Please contact us through info@ncdd.gov.kh

We now invite you to browse through this data book. You may open this randomly or use the table of contents and go to the aspects that have your special interest.

We hope that you will be informed, surprised and assisted. We hope, above all, that this information will lead to a deeper understanding of causes and effects of poverty, to purposeful decisions on how to tackle those causes and to greater transparency in using scarce resources for the benefit of all.

Martin de Graaf
Program Advisor, PSDD/NCD

SECTION A: GEOGRAPHY

1 Administration and Infrastructure

Please see separate folder containing A3 maps.

2 Land Use and Natural Resources

Please see separate folder containing A3 maps.

3 Geography

3.1 Land Area

Total Land Area (ha)	Forest Land Area (ha)		Cultivation Land Area (ha)	Construction Land Area (ha)	Other Land Area (ha)
	Total	Flooded Forest Area			
99767	35172	32508	13960	1218	20114

3.2 Distances between Offices

Location	Distance (Km)
From District Office to C/S Office of Chranouk	0
From District Office to C/S Office of Dar	0
From District Office to C/S Office of Kampong Hau	0
From District Office to C/S Office of Phlov Tuk	0
From District Office to C/S Office of Pou	0
From District Office to C/S Office of Pralay Meas	0
From District Office to C/S Office of Samraong Saen	0
From District Office to C/S Office of Svay Rumpear	0
From District Office to C/S Office of Trangel	0

SECTION B: DISTRICT PROFILE¹

¹ All data in this section come from the Commune Database (CDB) unless otherwise specified. These include primarily new CDB data, collected late 2008, and some data from earlier years. Please note that percentages are rounded to the nearest whole number.

1 General Information

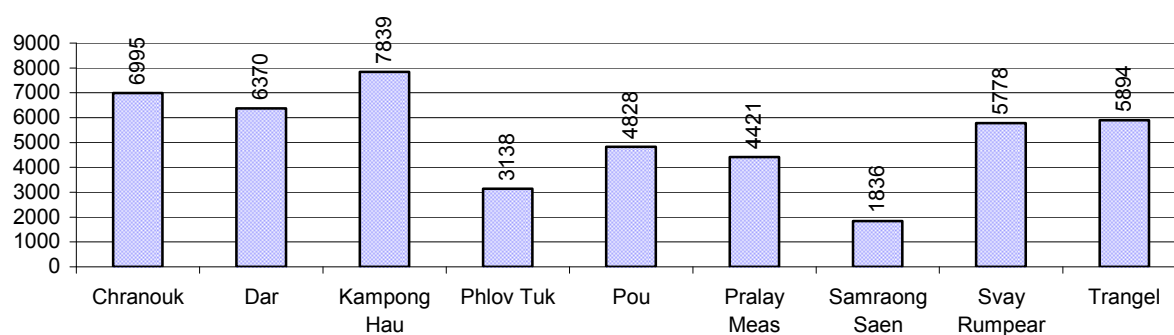
1.1 Population of the District

1.1.1 Total Population

Number of families	2005	2006	2007	2008
Total number of families	8,899 families	9,195 families	9,356 families	9,767 families
Increase (+)/Decrease (-) in nr of families		3%	2%	4%
Total population	44,321 pers	44,124 pers	46,085 pers	47,099 pers
Increase (+)/Decrease (-) in nr of people		0%	4%	2%
Number of female Headed Households (HH)	1,124 families	1,394 families	1,586 families	1,498 families

Note: Percentages of population and increase/decrease are calculated on basis of the previous year. A negative sign in front of the percentage indicates a decrease in population.

1.1.2 Population, by Commune, in 2008



1.1.3 Population, by Age Group, over 3 years

Population by age group	2006	2007	2008	
	%	%	%	Number
Age 0-5 years (as percentage of the population)	15%	16%	15%	7,202 persons
Male 0-5 yrs	49%	50%	51%	3,656 persons
Female 0-5 yrs	51%	50%	49%	3,546 persons
Age 6-17 (as percentage of the population)	33%	32%	34%	15,810 persons
Male 6-17 yrs	50%	51%	51%	8,087 persons
Female 6-17 yrs	50%	49%	49%	7,723 persons
Age 18-60 (as percentage of the population)	46%	46%	45%	21,279 persons
Male 18-60 yrs	47%	48%	49%	10,377 persons
Female 18-60 yrs	53%	52%	51%	10,902 persons
Age 61 above (as percentage of the population)	6%	6%	6%	2,808 persons
Male 61	48%	48%	47%	1,306 persons
Female 61	52%	52%	53%	1,502 persons

Note: The overall percentage for each age group is calculated on the basis of the total population. The gender distribution of each group is calculated on the basis of the population within that particular age group.

1.2 Occupations

1.2.1 Percentage of families with a particular Occupation over 3 years

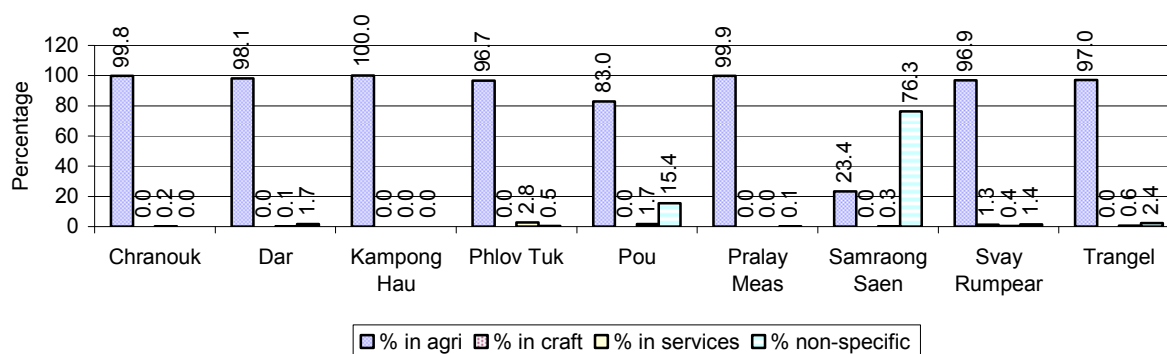
This table shows the percentage of the population who have a particular occupation (job), for example the percentage of the population in the district who are rice farmers, furniture crafter, trader, etc.

Description	2006	2007	2008	
	%	%	%	Number
Families whose main occupation is agriculture	96%	98%	94%	9,176 Families
Families whose primary occupation is rice farming	70%	74%	69%	6,771 Families
Families whose primary occupation is cultivating long-term crops	0%	0%	0%	34 Families
Families whose primary occupation is cultivating short-term crops	15%	14%	13%	1,290 Families
Families whose primary occupation is cultivating vegetable	2%	2%	3%	322 Families
Families whose primary occupation is fisherman	9%	8%	8%	754 Families
Families whose primary occupation is livestock farmer	0%	0%	0%	5 Families
Families whose primary occupation is NTFP collection	0%	0%	0%	0 Families
Families whose main occupation is craft work	0%	0%	0%	15 Families
Families, whose main occupation is in furniture craft, wooden, rattan, vine, bamboo	0%	0%	0%	15 Families
Families whose main occupation is in metal, aluminum, glass goods production	0%	0%	0%	0 Families
Families whose main occupation is food production	0%	0%	0%	0 Families
Families whose main occupation is tire, plastics and rubber goods production	0%	0%	0%	0 Families
Families whose main occupation is textile, clothing goods production	0%	0%	0%	0 Families
Families whose main occupation is in other production, not listed above	0%	0%	0%	0 Families
Families whose main occupation is services	1%	1%	1%	53 Families
Families whose main occupation is trade	1%	0%	0%	38 Families
Families whose main occupation is repair	0%	0%	0%	10 Families
Families whose main occupation is providing transport services	0%	0%	0%	2 Families
Families whose main occupation is providing other services	0%	0%	0%	3 Families
Families whose main occupation is not clear (or multi)	3%	1%	5%	523 Families

Note: The occupation percentages are calculated on the basis of the total number of families.

1.2.2 Percentage Families that work in one of four occupational sectors, by Commune in 2008

This table indicates the percentage of families involved in one of four occupation types: agriculture, craft, services or non-specific (other). Please note agriculture includes forestry activities such as cutting down trees and gathering gum from the trees.



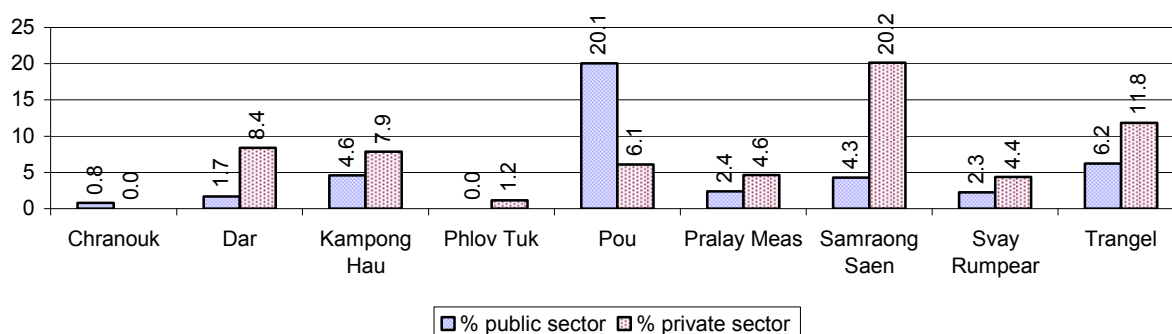
Note: Calculated on the basis of the total number of families within a commune.

1.2.3 Percentage of Families with public Sector, private Sector or uncertain Jobs, over 3 years

Description	2006	2007	2008	
	%	%	%	Number
Families that have a family member who is a government official, staff or worker	2%	3%	5%	459 families
Families that have a family member who is a private sector staff or worker	3%	6%	6%	611 families
Number of people aged 18-60 with uncertain/irregular jobs	2%	1%	1%	260 persons

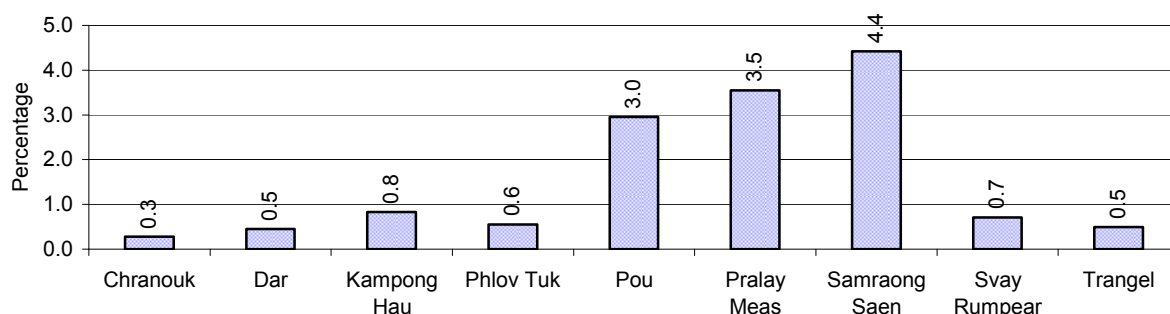
Note: In the first two rows percentages are calculated on the basis of the total number of families. In the third row the percentage is calculated on the basis of the total number of people aged 18-60 years.

1.2.4 Percentage of Families with public or private Sector Jobs, by Commune in 2008



Note: Calculated on the basis of the total number of families in the commune

1.2.5 Percentage of People aged 18-60 years with uncertain/irregular Jobs, by Commune, in 2008.



1.3 Property

1.3.1 Housing types and facilities over 3 years

This table shows the percentage of people living in a certain type of house. It also indicates how many houses have electricity or battery powered lights and how many have TV.

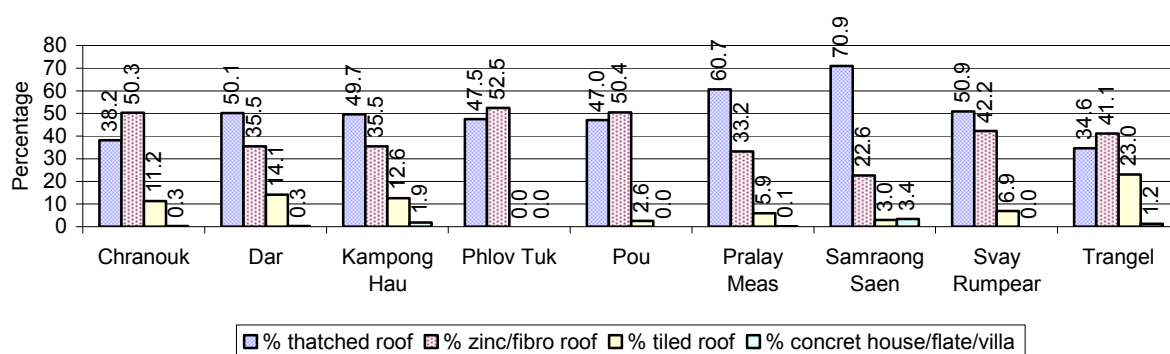
House Type	2006 %	2007 %	2008	
			%	Number
House with thatched roof	58 %	57 %	47 %	4,098 houses
House with zinc/fibro roof	32 %	33 %	41 %	3,578 houses
House with tiled roof	10 %	9 %	10 %	893 houses
Flats/apartments (with many families living)	0 %	0 %	0 %	0 houses
Concrete house or flat (with one family living)	1 %	1 %	1 %	62 houses
Villa house	0 %	0 %	0 %	0 houses
Houses with electricity	2 %	2 %	2 %	137 houses
Houses with battery light	69 %	80 %	81 %	7,028 houses
Houses with TV	41 %	46 %	50 %	4,339 houses

Note: Calculated against the total number of houses

1.3.2 Families living on public Land or without a permanent House

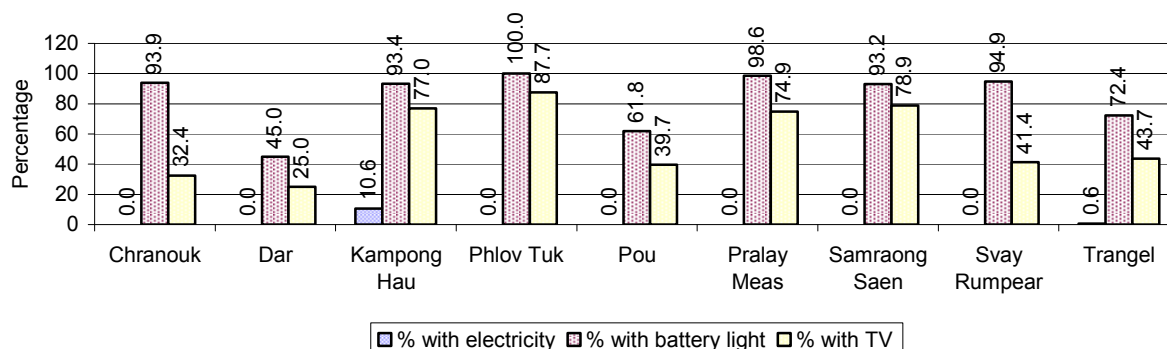
Living situation	2006	2007	2008
Families living in a house on public land	26 families	73 families	131 families
People, without permanent housing	9 person(s)	21 person(s)	19 person(s)

1.3.3 Percentage of Population living in a particular type of House, by Commune, in 2008



Note: Calculated against the total number of houses in each commune

1.3.4 Percentage of Houses with Electricity, Battery Lights and/or TVs, by Commune, in 2008



Note: Calculated against the total number of houses in each commune

1.3.5 Types of Vehicles and their ratio to Families across 3 years

This table shows the number of families per vehicle in the district. The last column shows the total number of each type of vehicle in the district for 2008.

Description	2006 ratio	2007 ratio	2008	
			Ratio	Number
Bicycle and bicycle with trailer	5	3	3	3,544
Ox-carts and horse-carts	4	4	4	2,500
Motorbike/with trailer	15	12	11	927
Motor tri-cycle	N/A	N/A	N/A	0
Large Transportation				
Total number of cars/trucks	98	203	188	52
Locally made vehicles	836	624	425	23
Trucks for goods transport	383	407	465	21
Buses/mini buses for passengers	9,195	9,356	4,884	2
Family cars	159	1,337	1,628	6
Agriculture machinery				
Tractors used for plowing	3,065	2,339	1,221	8
Power-tillage used for plowing	40	34	29	337
Other type of machinery				
Other type of machinery	1,533	2,339	651	15
Water transportation				
Row boats	2	2	2	4,586
Total number of motor boats				
Motor boats used for fishing	4	4	4	2,474
Motor boats used for passengers	7	5	6	1,761
Motor boats used for goods transporting	460	9,356	9,767	1
	14	13	14	712

Note: Ratio of families to a particular type of vehicle is the result of the total number of families divided by total number of that type of vehicle. Other types of vehicles, such as bulldozer, excavator, rollers etc. are not listed.

2 Infrastructure and Economy

2.1 Roads in meters over 3 years

Description	2006	2007	2008
Bituminous road	0 m	0 m	0 m
DBST, Macadam road	0 m	0 m	0 m
Concrete road	0 m	0 m	0 m
Laterite road	10,770 m	16,514 m	17,070 m
Constructed earth road	9,070 m	18,608 m	10,709 m
Un-constructed earth road	6,520 m	57,737 m	15,326 m

2.2 Sewerage Pipes in meters over 3 years

Description	Sewage pipe length		
	2006	2007	2008
Total length of sewage pipe, diameter 30-50 cm	6 m	0 m	80 m
Length of newly constructed sewage pipe, diameter 30-50 cm	0 m	0 m	15 m
Length of sewage pipe, diameter 30-50 cm needs repair/rehabilitation	0 m	0 m	9 m
Total length of sewage pipe, diameter of pipe 60-100 cm	109 m	0 m	110 m
Length of newly constructed sewage pipe, diameter 60-100 cm	2 m	0 m	88 m
Length of sewage pipe, diameter 60-100 cm needs repair/rehabilitation	1 m	0 m	2 m
Sewage pipe, diameter of pipe over 100 cm	102 m	0 m	0 m
Length of newly constructed sewage pipe, diameter over 100 cm	0 m	0 m	0 m
Length of sewage pipe, diameter over 100 cm needs repair/rehabilitation	0 m	0 m	0 m

2.3 Drainage and Bridges

Construction Type	2006		2007		2008	
	place(s)	Length	place(s)	Length	place(s)	Length
Single pipe culvert	40	288m	104	640 m	44	220 m
Double-pipe culvert	8	62m	10	69 m	1	6 m
Box pipe culvert	0	0m	3	18m	3	18 m
Wooden bridge	0	0m	0	0m	2	30 m
Concrete bridge	2	45m	1	25m	1	6 m
Bale bridge	1	16m	1	16m	0	0 m
Spillway construction	0	0m	0	0m	0	0 m

2.4 Services in the District

Descriptions	Number of places by year		
	2006	2007	2008
Public			
Electricity generating stations	1	1	1
Health clinics	0	0	2
Private			
Bicycle and motorcycle repair places	12	17	19
Agricultural machinery, tools and equipment repair places	1	2	6
Electronic tool repair places	0	1	2
Battery-charging services	56	61	60
Handicraft places, wooden furniture and forest by-products	1	1	3
Other handicraft places (excluding furniture)	0	0	0
Small-scale services (hairstylist, phone service, massage,	9	6	24

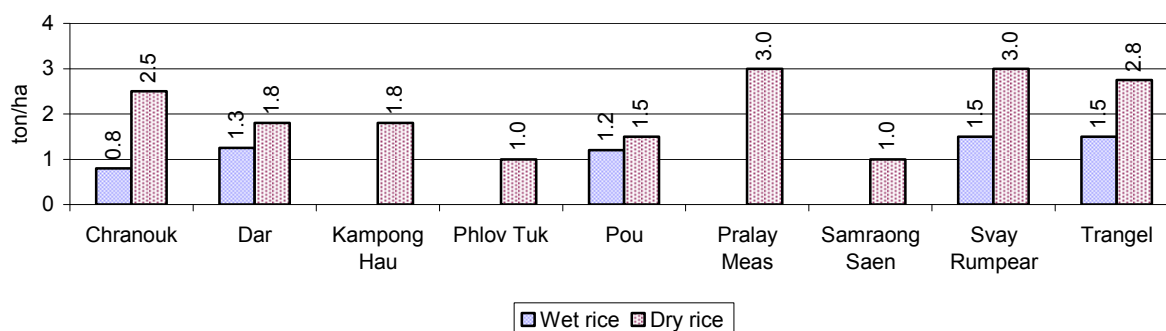
Descriptions	Number of places by year		
	2006	2007	2008
Karaoke, etc)			
Small-scale food shop businesses (Food, groceries, drink shop, etc)	2	4	5
Small-scale rice mills	100	75	87
Medium or large-scale rice mills	0	0	0
Small-scale markets	1	0	3
Large-scale market	0	0	1
Alcohol refinery places	41	36	39
Pharmacies and small drug stores	0	0	1
Hotels	0	0	0
Guest houses	0	0	0
Restaurants	0	0	0
Gasoline stations	0	0	0

2.5 Agriculture

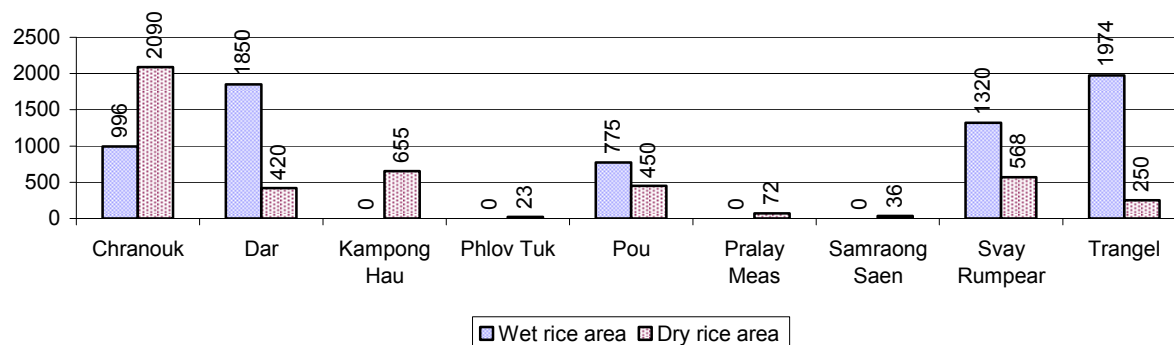
2.5.1 Rice cultivation in the District over 3 years

Description	2006	2007	2008
Total dry rice land area	3,857 ha	4,107 ha	5,884 ha
Actual dry rice cultivation area	2,795 ha	3,812 ha	4,564 ha
% actual cultivation to total land	72%	93%	78%
Total dry rice production	6,035 tonne(s)	8,577 tonne(s)	9,305 tonne(s)
Average dry rice yield	2.2 tonne(s)/ha	2.3 tonne(s)/ha	2.0 tonne(s)/ha
Total wet rice land area	6,986 ha	8,116 ha	6,936 ha
Actual wet rice cultivation area	5,719 ha	8,056 ha	6,915 ha
% actual cultivation to total land	82 %	99%	100%
Total wet rice production	7,606.27 tonne(s)	10,714.48 tonne(s)	8,643.75 tonne(s)
Average wet rice yield	1.3 tonne(s)/ha	1.3 tonne(s)/ha	1.3 tonne(s)/ha
Total intensive rice land area	0 ha	0 ha	0 ha
Actual intensive rice cultivation area	- ha	- ha	- ha
Average intensive rice yield	- tonne(s)/ha	- tonne(s)/ha	- tonne(s)/ha
Actual upland rice cultivation area	55 ha	55 ha	0 ha
Total upland rice production	39 tonne(s)	77 tonne(s)	- tonne(s)
Average upland rice yield	0.7 tonne(s)/ha	1.4 tonne(s)/ha	- tonne(s)/ha

2.5.2 Estimated wet and dry Season Rice Yield in tonne(s)/Ha, by Commune, in 2008



2.5.3 Cultivated wet and dry Season Rice areas in Ha, by Commune, in 2008



2.5.4 Estimated intensive Rice Yields in tonnes/Ha, by Commune, for 2008

There were no estimated intensive rice yields in this District in 2008

2.5.5 Estimated upland Rice Yield in tonnes/Ha, by Commune, for 2008

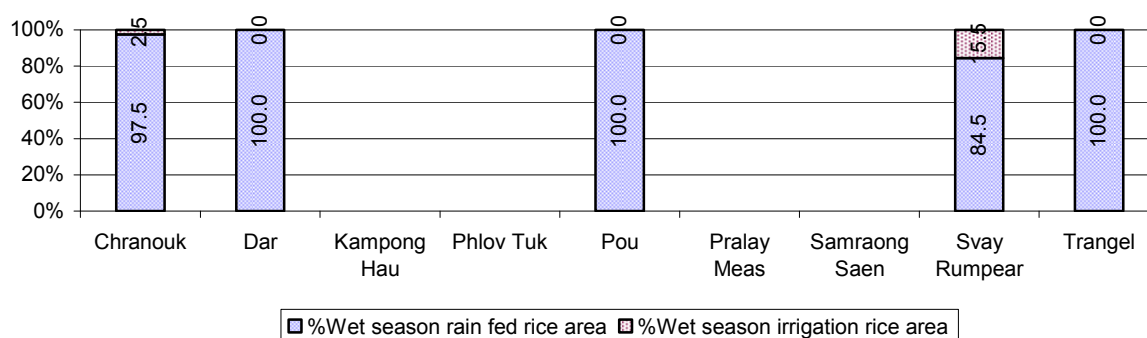
There were no estimated upland rice yields in this District in 2008

2.5.6 Wet season Rice irrigation across 3 years

Description		2006	2007	2008	
		%	%	%	Number
Total area of wet season rain fed rice land		99%	88%	97 %	6,685 ha
Percentage of wet season rice land that is irrigated; and for 2008 area in Ha		1 %	12 %	3 %	230 ha
Where	Area irrigated from canal/dam	100 %	97 %	89 %	205 ha
	Area irrigated from river, stream, lake, natural pond	0 %	3 %	0 %	0 ha
	Area irrigated from drilled well	0 %	0 %	0 %	0 ha
	Area irrigated from dug pond	0 %	0 %	11 %	25 ha

2.5.7 Water sources for wet Season Rice Cultivation, by Commune, in 2008

This chart shows the percentage of wet season rice cultivation receiving water from rain (natural) and from irrigation.



2.5.8 Access to Irrigation

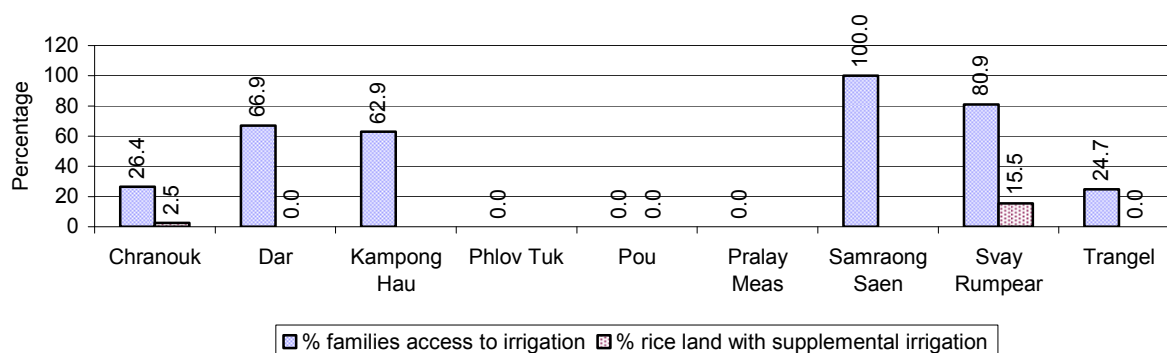
Description	2006 %	2007 %	2008	
			%	Number
Families who have access to irrigation water	39%	45%	47%	3,166 families
Families who have irrigation wells	0%	0%	0%	25 families

Note: Calculated against the total number of families are rice farmers

2.5.9 Number of Irrigation Wells over 3 years

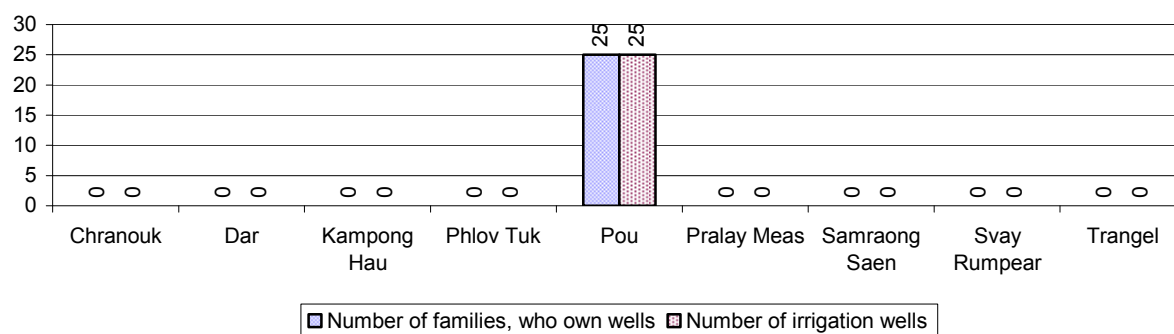
Description	2006	2007	2008
Number of irrigation wells	6 wells	6 wells	25 wells

2.5.10 Percentage of Families with access to (supplemental) Irrigation for wet Season Rice cultivation, by Commune, in 2008



Note: % of families, with access to irrigation is calculated against the total number of families, whose main occupation is rice farming. Irrigated wet rice land area is calculated against the total actual wet rice land cultivated areas

2.5.11 Irrigation Wells, by Commune, in 2008

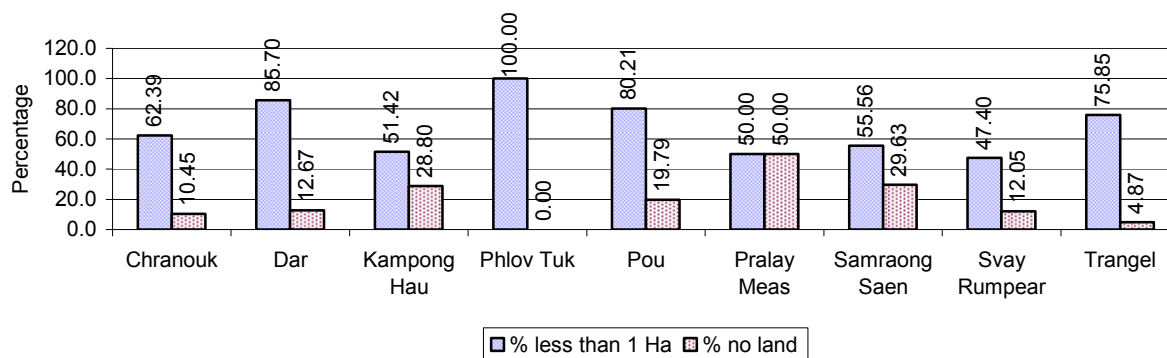


2.5.12 Farmers owning less than one hectare of Rice Land

Description	2006 %	2007 %	2008	
			%	Number
Families who have less than one hectare of rice land	50%	64%	66%	4,491 families
Families who do not own any rice land	4%	7%	14%	957 families

Note: Calculated on basis of total number of families who are rice farming

2.5.13 Percentage of Farmers with less than one Hectare or no Rice Land, by Commune, in 2008

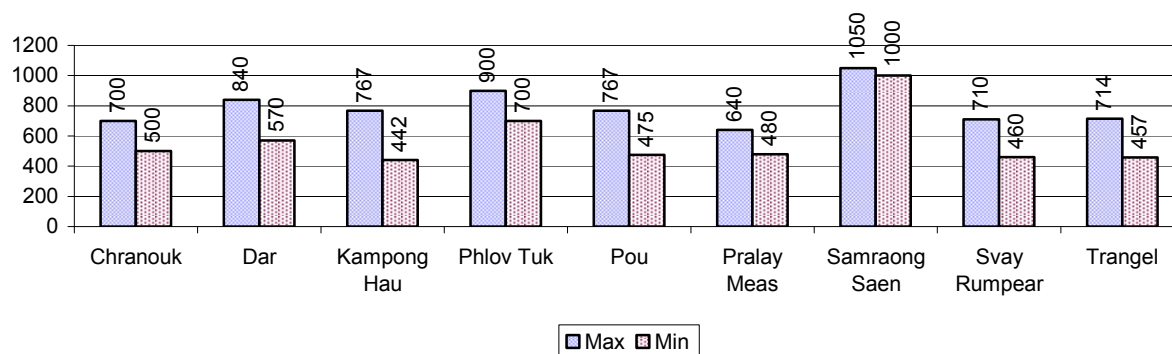


Note: Calculated on basis of total number of families who are rice farming

2.5.14 Average farm-gate Prices of Rice, over 3 years

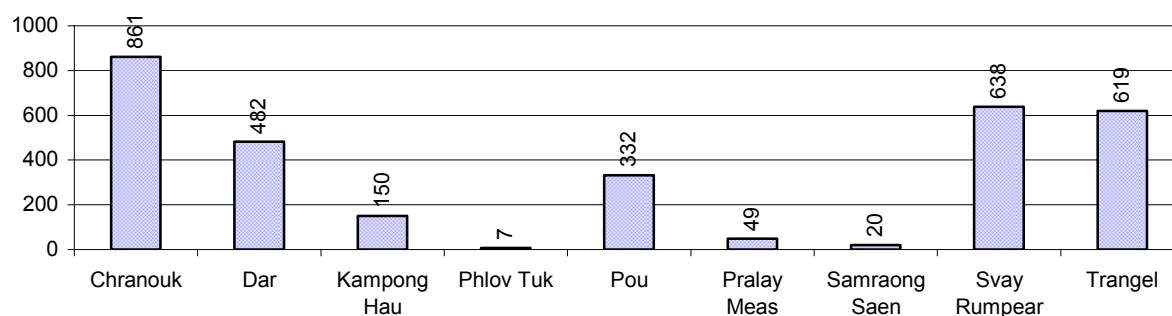
Description	2006	2007	2008
Maximum average farm gate price	506 Riels/Kg	675 Riels/Kg	788 Riels/Kg
Minimum average farm gate price	378 Riels/Kg	482 Riels/Kg	565 Riels/Kg
Average farm gate price	442 Riels/Kg	578 Riels/Kg	676 Riels/Kg
Average rice production per person	310 Kg/person	420 Kg/person	381 Kg/person

2.5.15 Minimum and maximum farm-gate Prices of Rice in Riel/kg, by Commune, in 2008



2.5.16 Production of Paddy in Kgs/Person, by Commune, in 2008

This table shows how much paddy (harvested rice) is produced in a year in a commune, in kgs per person.

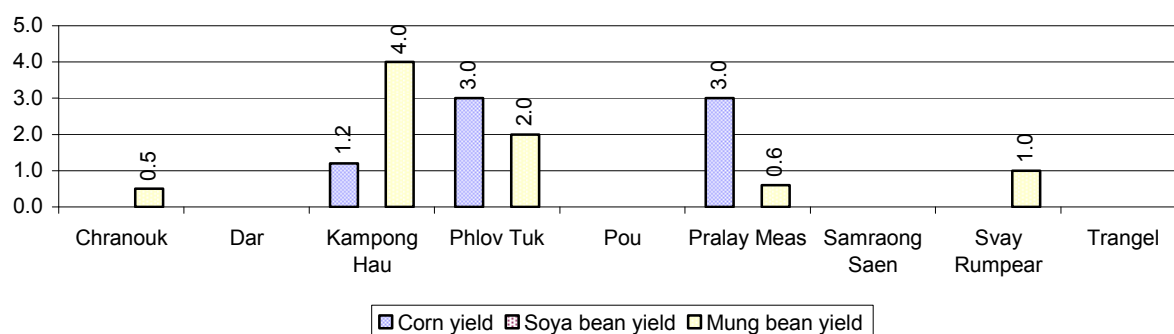


2.5.17 Production of other Crops, over 3 years

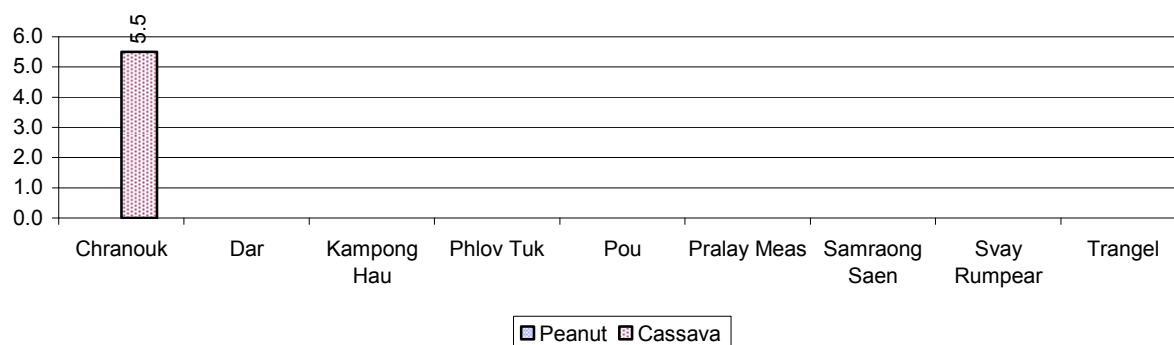
Crops	2006	2007	2008
Corn cultivation area	480 ha	288 ha	663 ha
Estimated corn yield	1.6 tonne(s)/ha	1.4 tonne(s)/ha	2.4 tonne(s)/ha
Estimated corn production	752 tonne(s)	403 tonne(s)	1,591 tonne(s)
Soya bean cultivation area	0 ha	0 ha	0 ha
Estimated Soya bean yield	- tonne(s)/ha	- tonne(s)/ha	- tonne(s)/ha
Estimated Soya bean production	- tonne(s)	- tonne(s)	- tonne(s)
Mungbean cultivation area	1,041 ha	1,850 ha	1,680 ha
Estimated Mungbean yield	0.8 tonne(s)/ha	1.3 tonne(s)/ha	1.6 tonne(s)/ha
Estimated Mungbean production	798 tonne(s)	2,343 tonne(s)	2,722 tonne(s)
Peanut cultivation area	0 ha	0 ha	0 ha
Estimated Peanut yield	- tonne(s)/ha	- tonne(s)/ha	- tonne(s)/ha
Estimated Peanut production	- tonne(s)	- tonne(s)	- tonne(s)
Cassava cultivation area	33 ha	21 ha	29 ha
Estimated Cassava yield	2.0 tonne(s)/ha	1.2 tonne(s)/ha	5.5 tonne(s)/ha
Estimated Cassava production	66 tonne(s)	25 tonne(s)	160 tonne(s)
Sweet potatoes cultivation area	11 ha	5 ha	4 ha
Estimated Sweet potatoes yield	2.1 tonne(s)/ha	0.6 tonne(s)/ha	4.0 tonne(s)/ha
Estimated Sweet potatoes	23 tonne(s)	3 tonne(s)	16 tonne(s)

Crops	2006	2007	2008
production			
Sesame cultivation area	32 ha	15 ha	128 ha
Estimated Sesame yield	1.1 tonne(s)/ha	1.4 tonne(s)/ha	1.0 tonne(s)/ha
Estimated Sesame production	34 tonne(s)	20 tonne(s)	128 tonne(s)

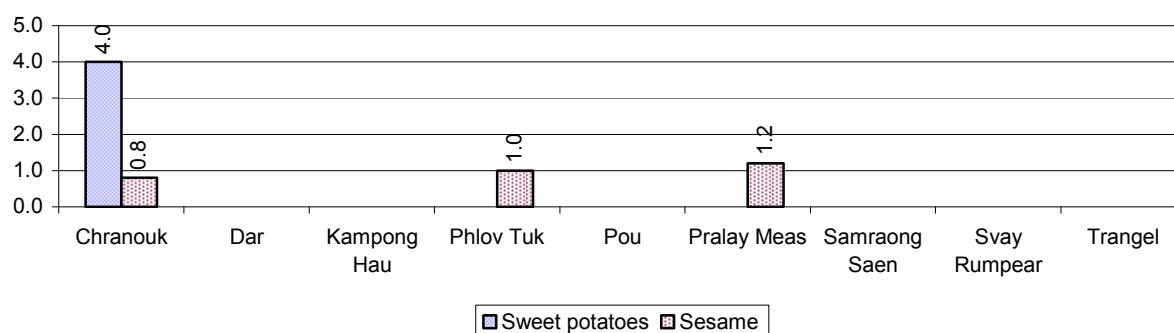
2.5.18 Yields of Corn, Soya beans and Mungbeans in tonne(s)/ha, by Commune, in 2008



2.5.19 Yields of Peanuts and Cassava in tonne(s)/ha by Commune, in 2008



2.5.20 Yields of Sweet Potatoes and Sesame in tonne(s)/ha, by Commune, in 2008



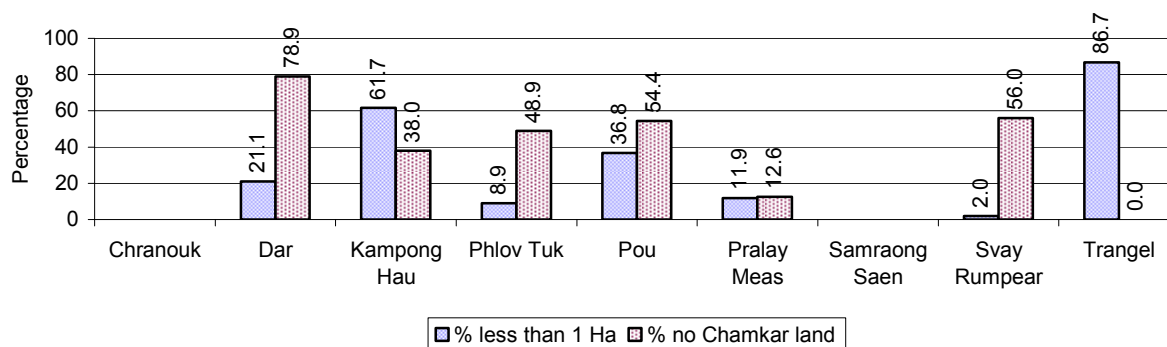
2.5.21 Percentage Farmers who own less than 1 Ha or no Chamkar land

Description	2006 %	2007 %	2008	
			%	Number
Families, who own less than 1ha of Chamkar land	34%	19%	30%	490 families
Families, with no Chamkar land	17%	10%	30%	497 families

Note 1: Calculated as a percentage of the total number of families whose main occupation is Chamkar (not rice) farming

Note 2: Chamkar land is no-rice land, i.e. other crops

2.5.22 Percentage Farmers owning less than 1 ha or no Chamkar land, by Commune, in 2008



Note: Percentage is calculated among families, who Chamkar farm as a main occupation, not the total population of the commune.

2.5.23 Percentage of Families raising Cattle/Buffalo, over 3 years

Description	2006 %	2007 %	2008	
			%	Number
Families raising cattle/buffalo	51%	55%	52%	5,104 families
Families raising cattle/buffalo as labor forces	41%	45%	42%	4,099 families

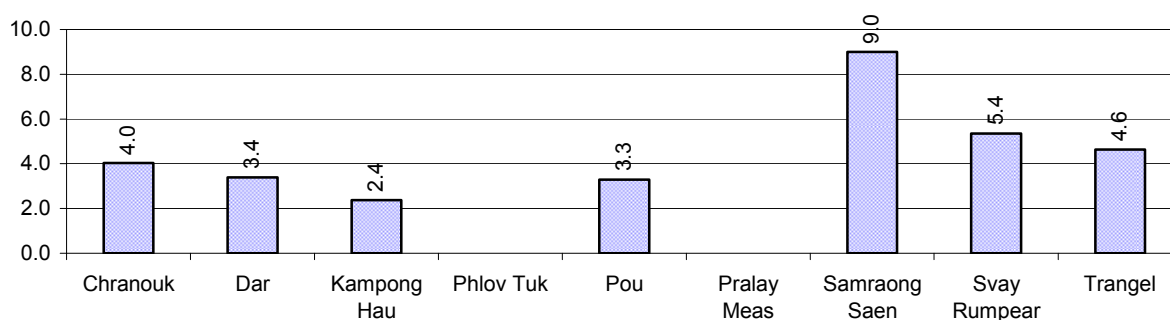
Note: Calculated against the total number of families.

2.5.24 Number of Cattle/buffalo being raised, over 3 years

Description	2006	2007	2008
Total number of cattle/buffalo	15,524 head(s)	22,750 head(s)	20,874 head(s)
Average cattle/buffalo per families	3.3 head(s)/families	4.4 head(s)/families	4 head(s)/families

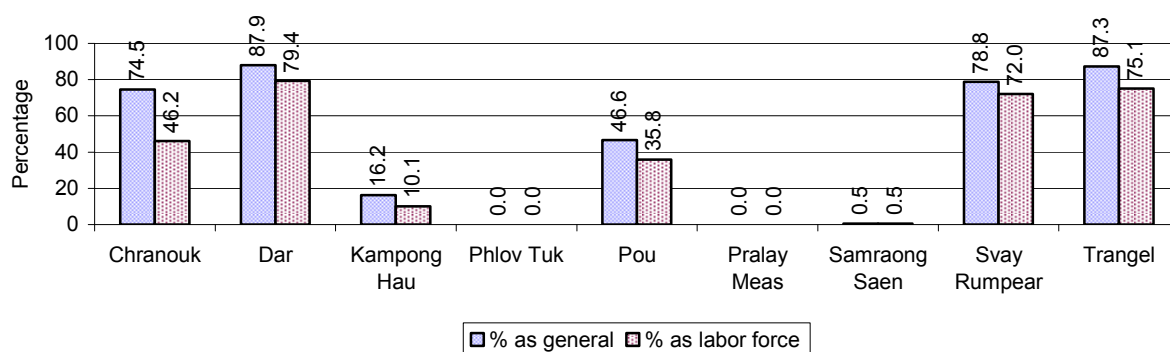
Note: Calculated by dividing total number of cattle/buffalo by total number of cattle/buffalo raising families

2.5.25 Average number of Cattle/Buffalo per Family, by Commune, in 2008



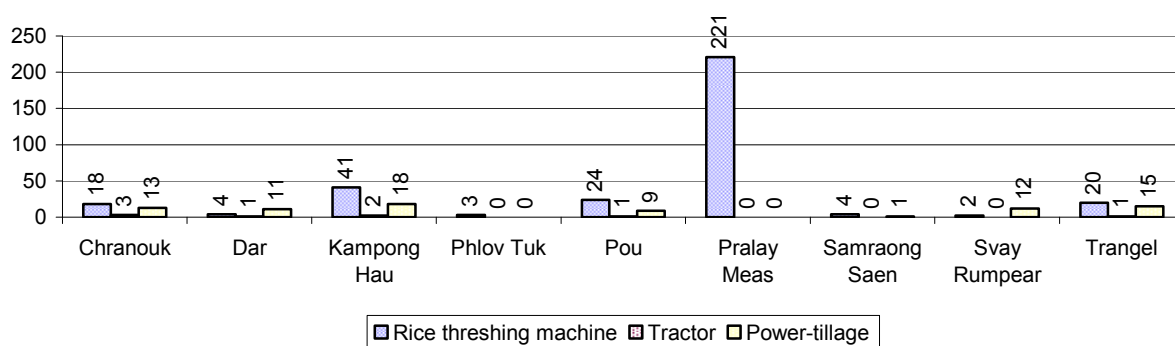
Note: Calculated by dividing total number of cattle/buffalo by total number of cattle/buffalo raising families

2.5.26 Percentage Families raising Cattle/Buffalo, for general and labor purposes in 2008, by Commune



Note: Calculated using the total number of families raising cattle/buffalo against the total number of families.

2.5.27 Type and number of agricultural Machines, by Commune, in 2008

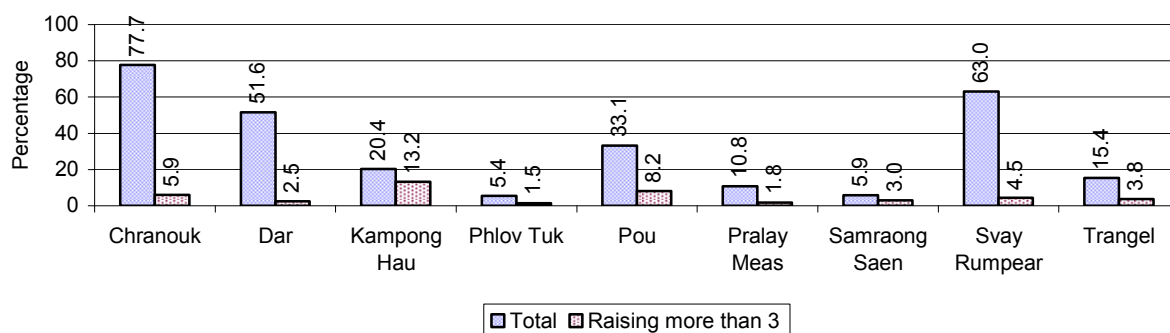


2.5.28 Livestock-producing Households over 3 years

Description	2006 %	2007 %	2008	
			%	Number
Total number of families raising pigs	42%	42%	38%	3,705 families
number of families raising more than 3 pigs	7%	6%	6%	552 families
Total number of families raising chickens	53%	64%	61%	6,004 families
number of families raising more than 3 chickens	39%	40%	37%	3,646 families
Total number of families raising ducks	1%	2%	2%	174 families
number of families raising more than 5 ducks	1%	1%	1%	131 families
Total number of families raising goats or sheep	0%	0%	0%	5 families
Total number of families raising horses	0%	0%	0%	6 families

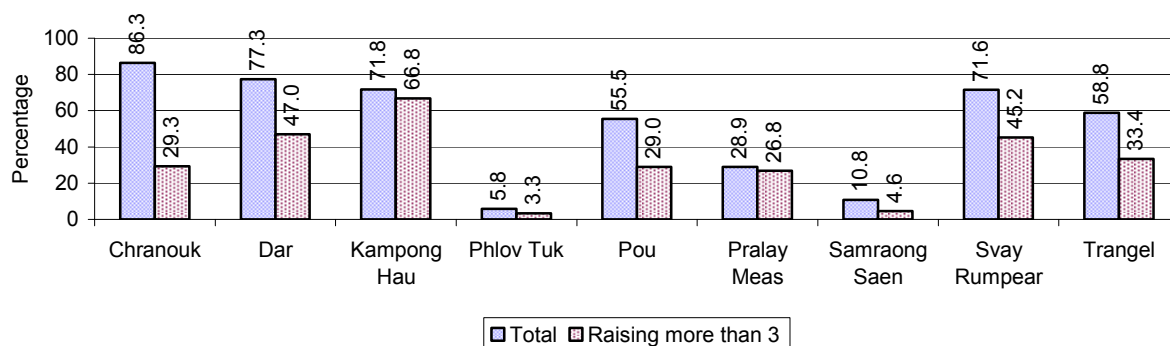
Note: Calculated against the total number of families

2.5.29 Percentage Families raising Pigs, by Commune, in 2008



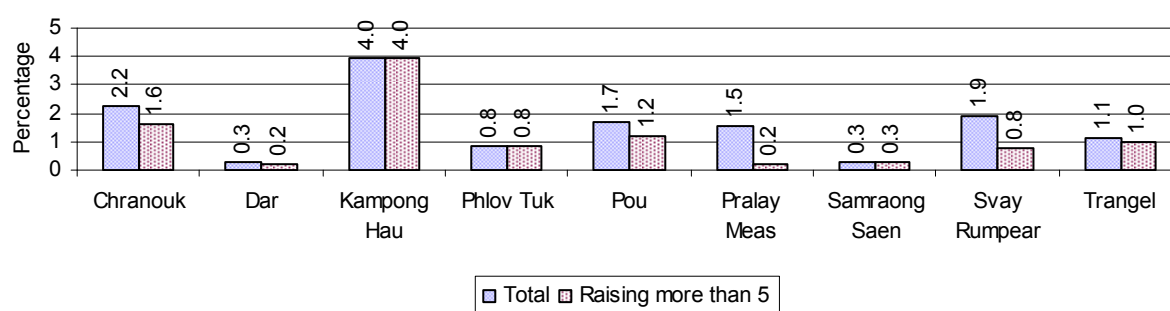
Note: Calculated against the total number of families in the commune

2.5.30 Percentage Families raising Chickens, by Commune, in 2008



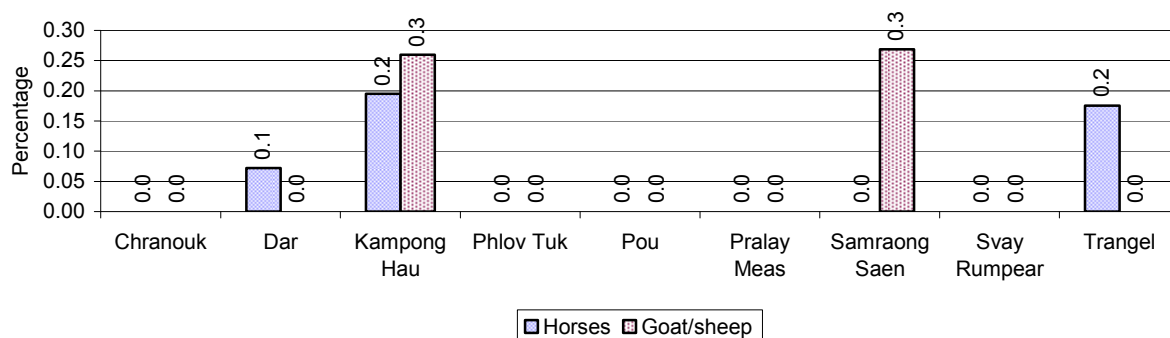
Note: Calculated against the total number of families in the commune

2.5.31 Percentage Families raising Ducks, by Commune, in 2008



Note: Calculated against the total number of families in the commune

2.5.32 Percentage Families raising Horses, Goats or Sheep, by Commune, in 2008

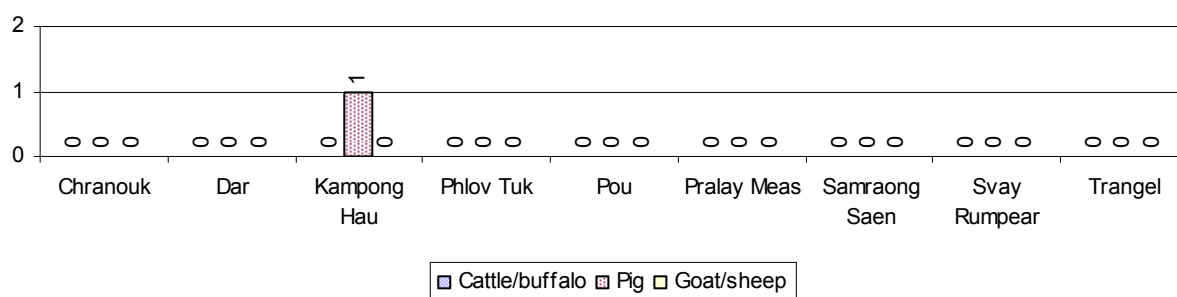


Note: Calculated against the total number of families in the commune

2.5.33 Livestock Farms over 3 years

Description	2006	2007	2008
Number of cattle/buffalo farms	0 farm(s)	0 farm(s)	0 farm(s)
Number of pig farms	0 farm(s)	0 farm(s)	1 farm(s)
Number of goat/sheep farms	0 farm(s)	0 farm(s)	0 farm(s)
Number of chicken farms	0 farm(s)	0 farm(s)	0 farm(s)
Number of duck farms	0 farm(s)	0 farm(s)	0 farm(s)

2.5.34 Number Livestock Farms, by Commune in 2008



Note: Number of farms are recorded by the village chief, not by counting number of livestock in each farm

2.5.35 Number Chicken and Duck Farms, by Commune, for 2008

There were no farms of this type in this District in 2008

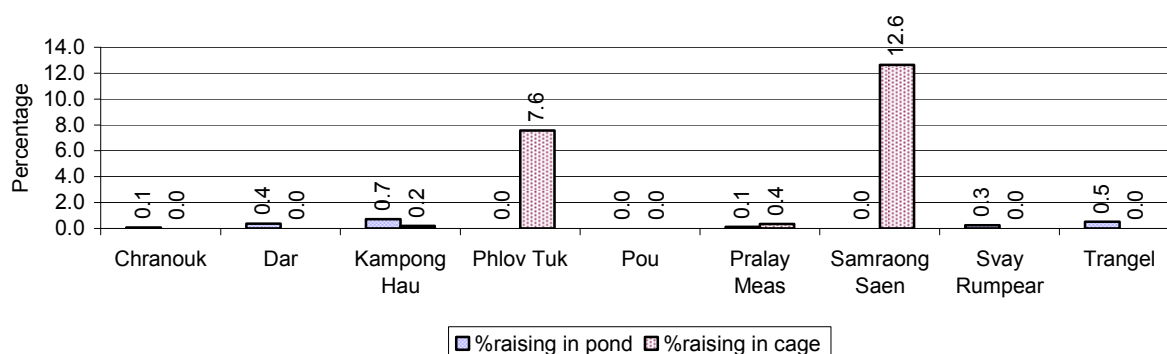
Note: Number of farm places recorded by village chief, not by counting number of livestock in each farm

2.5.36 Families raising Fish over 3 years

Description	2006	2007	2008
Total number of families raising fish	93 families	89 families	126 families
% families raising fish	1%	1%	1%
Number families raising fish in pond	23 families	23 families	27 families
% families raising fish in pond	0%	0%	0%
Number fish pond	23 pond(s)	23 pond(s)	28 pond(s)
No. of ponds per family	1.0 pond/families	1.0 pond/families	1.0 pond/families
Number of families raising fish in cage	70 families	66 families	99 families
%families raising fish in cage	1 %	1 %	1%
Number of fish cage	92 cage(s)	66 cage(s)	99 cage(s)
No. of fish cage per family	1.3 cage /families	1.0 cage /families	1.0 cage /families

Note: % of families raising fish or fish in ponds or cages is calculated a percentage of the total number of families.

2.5.37 Percentage of Families raising Fish, by Commune, in 2008



Note: Calculated as a percentage of the total number of families in the commune.

2.5.38 Shrimp and Prawn Farming over 3 years

Description	2006	2007	2008
Number of families raising shrimps	0 families	0 families	0 families
% Families raising shrimps	0%	0%	0%
Number of shrimp ponds	0 pond	0 pond	0 pond
Total area raising shrimps	0 ha	0 ha	0 ha
Area per family	-ha/families	-ha/families	-ha/families
Number of families raising prawns	0 families	0 families	0 families
% families raising prawns	0%	0%	0%
Number prawn ponds	0 pond	0 pond	0 pond
Ponds per families	- pond/families	-pond/families	-pond/families
Number of prawn cages	0 cage	0 cage	0 cage
Cages per families	0 cage /families	0 cage /families	0 cage /families

Note: Percentage of families raising either prawns or shrimp is calculated against the number of families, who do aquaculture farming, NOT the total population.

2.5.39 Numbers of Families raising Shrimps and number of Shrimp Ponds, by Commune, in 2008

There were none of these in this District in 2008

2.5.40 Number of Families raising Prawn and Number of Prawn Ponds/Cages, by Commune, in 2008

There were none of these in this District in 2008

3 Social Aspects

3.1 Education

3.1.1 Kindergarten in the District over 3 years

Description	2006	2007	2008
Number of community kindergarten schools	0 school(s)	0 school(s)	0 school(s)
Number of community kindergarten class rooms	0 room(s)	0 room(s)	0 room(s)
Number of community kindergarten classes	0 class(es)	0 class(es)	0 class(es)
Number of community kindergarten teachers	0 person(s)	0 person(s)	0 person(s)
Number of women community kindergarten teachers	0 women	0 women	0 women
Number of state and private kindergarten schools	3 school(s)	4 school(s)	4 school(s)
Number of state and private kindergarten class rooms	6 room(s)	6 room(s)	5 room(s)
Number of state and private kindergarten classes	6 class(es)	6 class(es)	6 class(es)
Number of state and private kindergarten teachers	6 person(s)	6 person(s)	6 person(s)
Number of women state and private kindergarten teachers	6 women	6 women	6 women

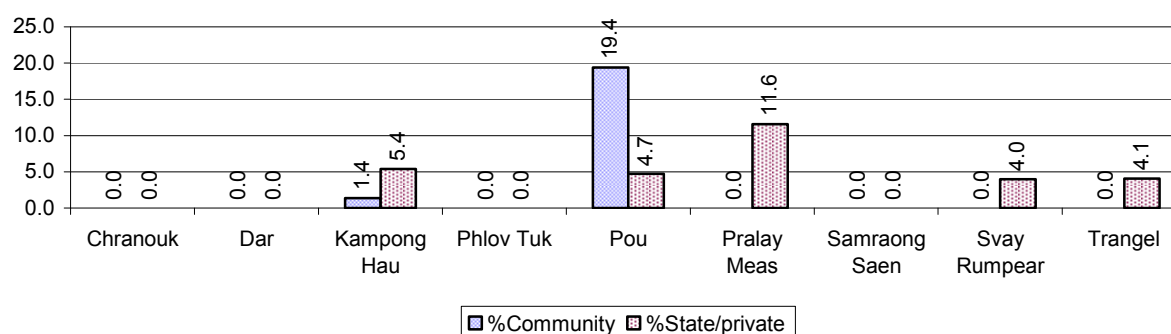
3.1.2 Percentage enrolment at Kindergarten level over 3 years

This table shows the percentage of the total 3-5 year old population attending kindergarten.

Description	2006 %	2007 %	2008	
			%	Number
Total percentage of children, 3-5 yrs, go to kindergarten	8%	6%	6%	241 person(s)
Percentage of children, 3-5 yrs, go community kindergarten	4%	3%	2%	92 person(s)
Percentage children, 3-5 yrs, go state/private kindergarten	4%	3%	3%	149 person(s)

Note: Calculated against the total for that age group

3.1.3 Percentage of Children 3-5 yrs attending Kindergarten, by Commune, in 2008



3.1.4 Basic Education over 3 years

Primary School

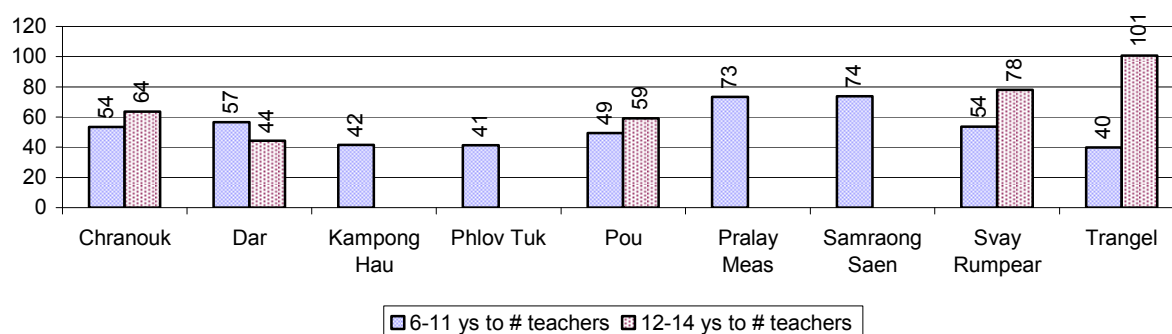
Description	2006	2007	2008
Number of primary schools	32 school(s)	35 school(s)	34 school(s)
Number of primary school rooms	166 room(s)	177 room(s)	184 room(s)
Number of primary classes	218 class(es)	212 class(es)	212 class(es)
Number of primary teachers	135 person(s)	158 person(s)	152 person(s)
Ratio of children 6-11 yrs to school	230	217	226
Ratio of children 6-11 yrs to school room	44	43	42
Ratio of children 6-11 yrs to class	34	36	36
Ratio of children 6-11 yrs to teacher	54	48	51

Note: According to education norm, children 6-11 yrs should attend primary school, while 12-14 yrs should be in lower secondary school, but in reality this varies.

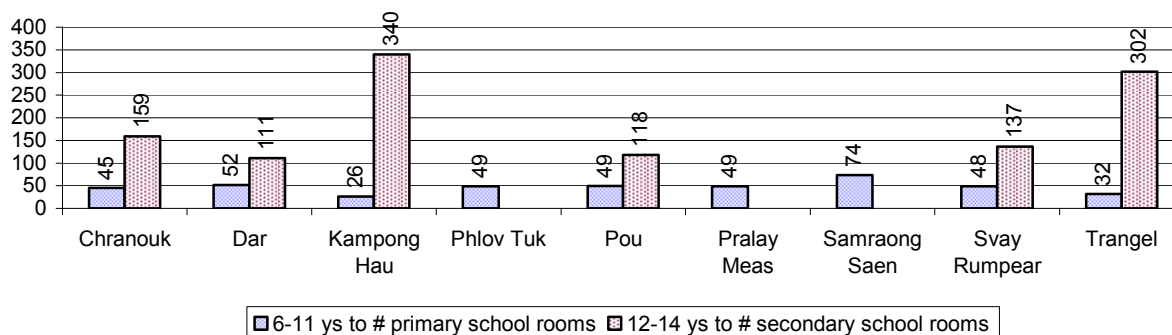
Lower Secondary School

Description	2006	2007	2008
Number of lower secondary schools	3 school(s)	4 school(s)	6 school(s)
Number of lower secondary school rooms	14 room(s)	15 room(s)	21 room(s)
Number of lower secondary classes	11 class(es)	93 class(es)	25 class(es)
Number of lower secondary teachers	17 person(s)	25 person(s)	44 person(s)
Ratio children 12-14 yrs to school	1,249	944	718
Ratio of children 12-14 yrs to school room	268	252	205
Ratio of children 12-14 yrs to class	341	41	172
Ratio of children 12-14 yrs to teacher	220	151	98

3.1.5 Ratio of 6-11 year old and 12-14 year old Children to number of Teachers, by Commune, in 2008



3.1.6 Ratio of 6-11 year old and 12-14 year old Children to number of School Rooms, by Commune, in 2008



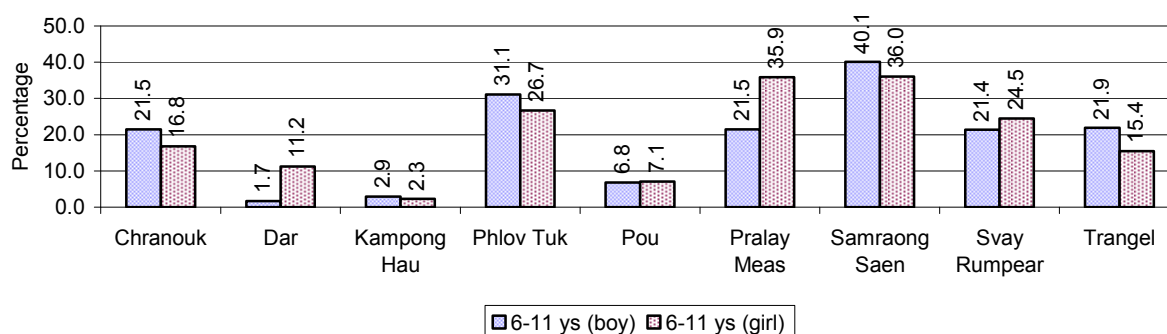
3.1.7 Enrolment status at Primary Level over 3 years

Description	2006 %	2007 %	2008	
			%	Number
Total children aged 6-11 years old	17%	16%	16%	7,691 person(s)
Total children aged 6-11 who are in school	85%	85%	83%	6,398 person(s)
Total children aged 6-11 who are not in school	15%	15%	17%	1,293 person(s)
Total girls aged 6-11 years old	16%	16%	16%	3,749 person(s)
Total girls aged 6-11 who are in school	83%	85%	83%	3,093 person(s)
Total girls aged 6-11 who are not in school	17%	15%	17%	656 person(s)
Total boys aged 6-11 years old	17%	17%	17%	3,942 person(s)
Total boys aged 6-11 who are in school	87%	84%	84%	3,305 person(s)
Total boys aged 6-11 who are not in school	13%	16%	16%	637 person(s)

Note 1: Percentage is calculated on the basis of the total number of children within 6-11 year age group for the first 3 rows and for the total girls and the total boys aged 6-11 yrs.

Note 2: Number of girls aged 6-11 who are in & not in school is calculated against the total number of girls aged 6-11 yrs. Number boys, 6-11 yrs who are in & not in school are calculated against the total number of boys aged 6-11 yrs.

3.1.8 Percentage of 6-11 year old Children not in School, by Commune, in 2008



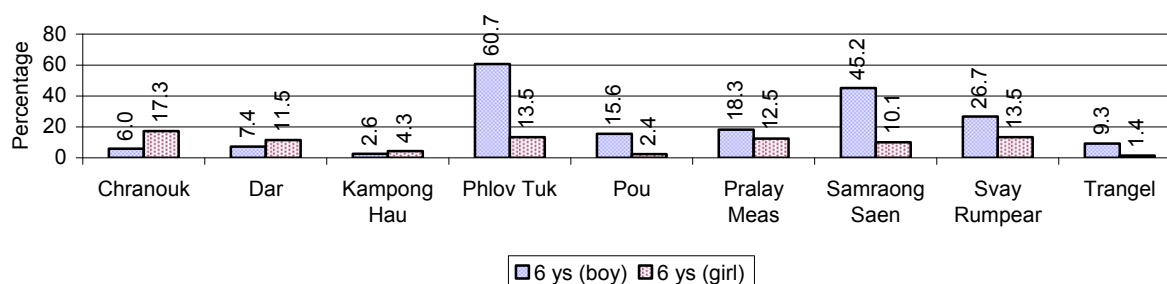
Note: calculated on the basis of the total number of children within 6-11 year age group in the commune.

3.1.9 Enrolment of 6 year old Children over 3 years

Description	2006 %	2007 %	2008	
			%	Number
Total % and number of children aged 6 years old	5%	4%	4%	1,823 person(s)
Total % of children aged 6 years old in school	81%	72%	83%	1,506 person(s)
Total % of children aged 6 years old not in school	19%	28%	17%	317 person(s)

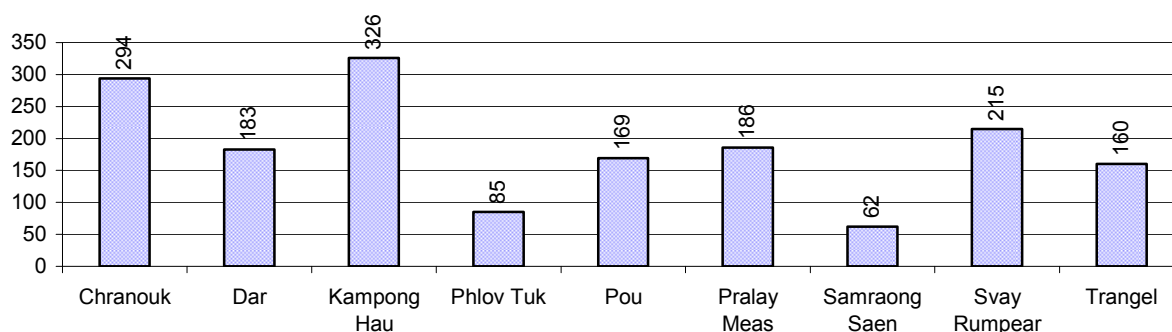
Note: First row calculated as a percentage of total population. Second and third row calculated as a percentage of the total number of 6 year olds.

3.1.10 Percentage of 6 year old Children not in School, by Commune, in 2008



Note: Calculated as a percentage of total 6 year old population

3.1.11 Number of 5 year old Children in each Commune in 2008

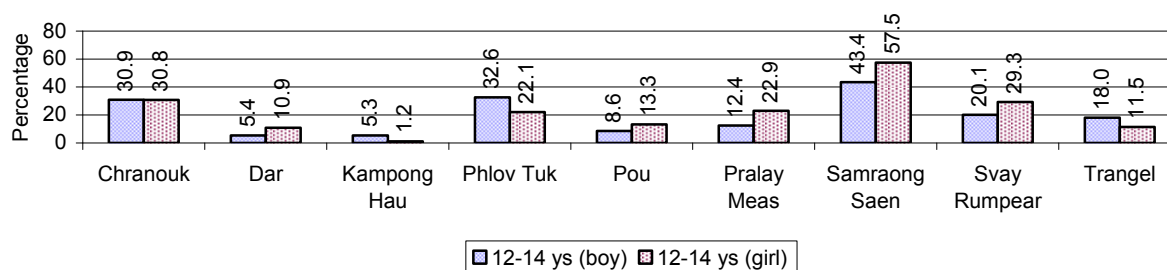


3.1.12 Enrolment at Lower Secondary Level over 3 years

Description	2006 %	2007 %	2008	
			%	Number
Total children aged 12-14 years old	8%	8%	9%	4,309 person(s)
Children aged 12-14 years old in school	81%	83%	82%	3,546 person(s)
Children aged 12-14 years old not in school	19%	17%	18%	763 person(s)
Total girls aged 12-14 years old	8%	8%	9%	2,159 person(s)
Girls aged 12-14 years old in school	78%	84%	81%	1,757 person(s)
Girls aged 12-14 years old not in school	22%	16%	19%	402 person(s)
Total boys aged 12-14 years old	9%	9%	9%	2,150 person(s)
Boys aged 12-14 years old in school	85%	83%	83%	1,789 person(s)
Boys aged 12-14 years old not in school	15%	17%	17%	361 person(s)

Note: Percentage is calculated on the basis of number of the total number of children within 12-14 yrs group, except for the first row of each section which is calculated on the basis of the total population.

3.1.13 Percentage of 12-14 year olds not in School, by Commune, in 2008



Note: Calculated as a percentage of the total 12-14 year old population in each commune

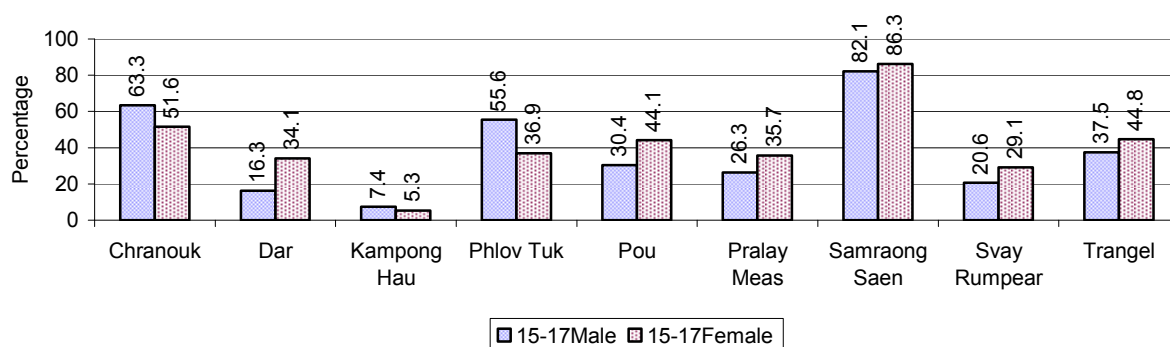
3.1.14 Upper Secondary Schools over 3 years

Description	2006	2007	2008
Number of upper secondary schools	1 school(s)	1 school(s)	1 school(s)
Number of upper secondary school rooms	16 room(s)	16 room(s)	24 room(s)
Number of upper secondary classes	18 class(es)	20 class(es)	12 class(es)
Number of upper secondary teachers	35 person(s)	39 person(s)	40 person(s)
Ratio of 15-17 yr olds to number of school	3,350	3,315	3,810
Ratio of 15-17 yr olds to number of school room	209	207	159
Ratio of 15-17 yr olds to number of classes	186	166	318
Ratio of 15-17 yr olds to number of teacher	96	85	95

3.1.15 Enrolment of 15-17 year old teenagers over 3 years

Description	2006	2007	2008
Number of teenage, 15-17 years old	3,350 person(s)	3,315 person(s)	3,810 person(s)
Number of teenage, 15-17 years old, who are not studying	1,272 person(s)	1,050 person(s)	1,299 person(s)
Percentage of teenage, 15-17 years old not studying	38%	32%	34%

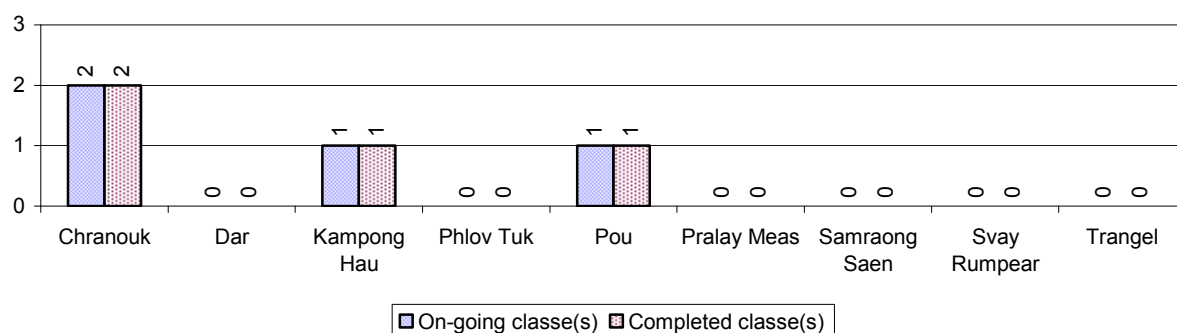
3.1.16 Percentage of 15-17 year old Teenagers not at School, by Commune, in 2008



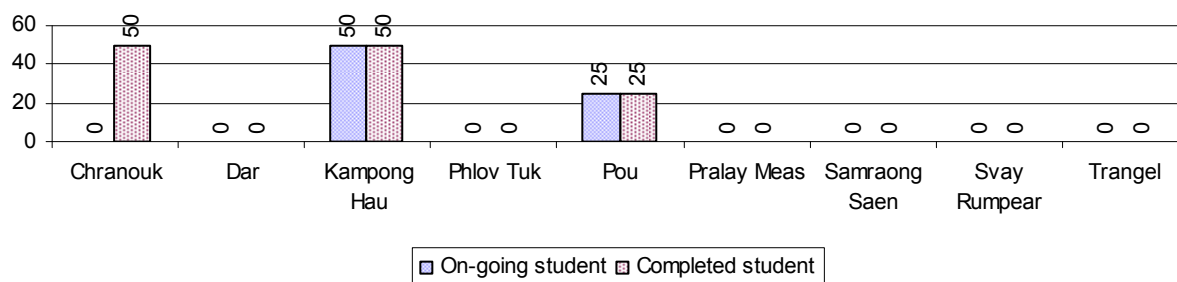
3.1.17 Literacy Classes as of 2008

Literacy classes	Organized by:		Other Program(s)	Total
	PDoEYS	NGOs		
Number of On-going literacy classes	4 class(es)	0 class(es)	0 class(es)	4 class(e(s)
Number of literacy students in on-going classes	75 person(s)	0 person(s)	0 person(s)	75 person(s)
Completed literacy class(es)	4 classes	0 classes	0 classes	4 classes
Number of literacy students that have completed literacy classes	125 person(s)	0 person(s)	0 person(s)	125 person(s)
Number of students that passed	125 person(s)	0 person(s)	0 person(s)	125 person(s)

3.1.18 Number of on-going and completed Literacy Classes, by Commune, in 2008



3.1.19 Students of on-going & completed Literacy Classes, by Commune, in 2008

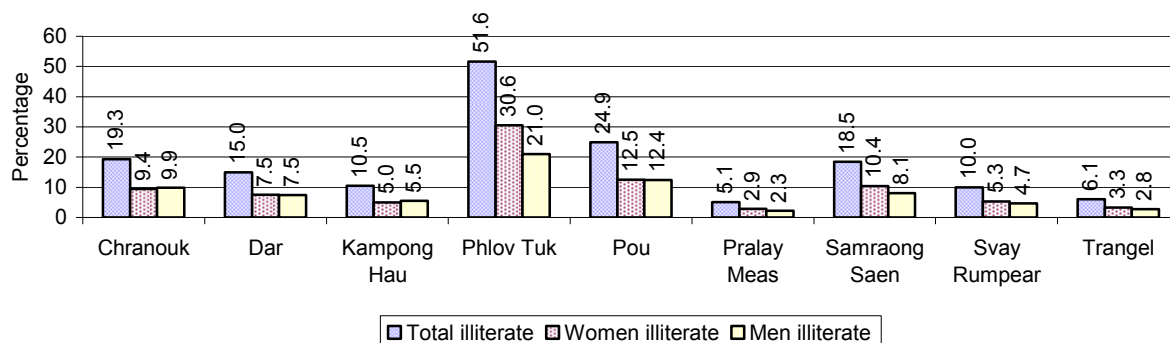


3.1.20 Percentage of illiterate People between 15-60, over 3 years

Illiteracy Status	2006 %	2007 %	2008	
			%	Number
Illiterate people, 15-60 years old	19%	19%	16%	3,997 person(s)
Illiterate females, 15-60 years old	10%	10%	8%	2,096 person(s)
Illiterate people, 15-17 years old	13%	13%	11%	413 person(s)
Illiterate females, 15-17 years old	7%	7%	6%	224 person(s)
Illiterate people, 18-24 years old	16%	15%	11%	685 person(s)
Illiterate females, 18-24 years old	9%	8%	6%	401 person(s)
Illiterate people, 25-60 years old	22%	23%	19%	2,899 person(s)
Illiterate females, 25-60 years old	12%	12%	10%	1,471 person(s)

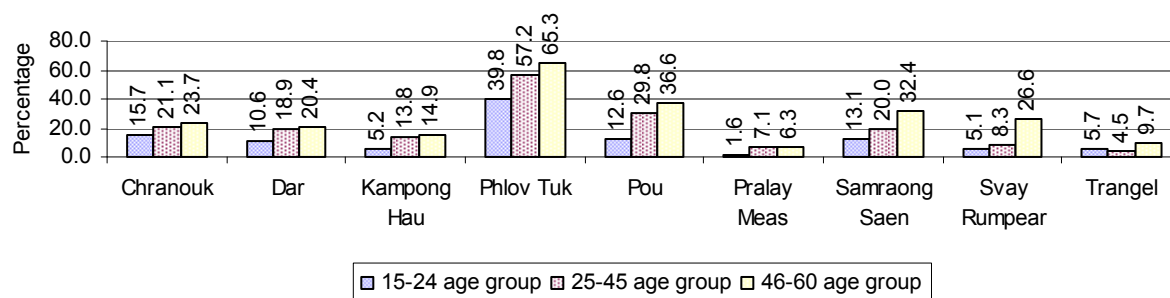
Note: Percentage is calculated on the basis of number of people in age each group.

3.1.21 Percentage illiterate People among 15-60 yrs old, by Commune, in 2008



Note: Percentages are calculated on the basis of number of people in that age group.

3.1.22 Percentage illiterate People for 15-24 yrs, 25-45 yrs and 46-60 yrs, by Commune, in 2008



Note: Percentage of illiterate people in each age group is calculated on the basis of number of people in that age group.

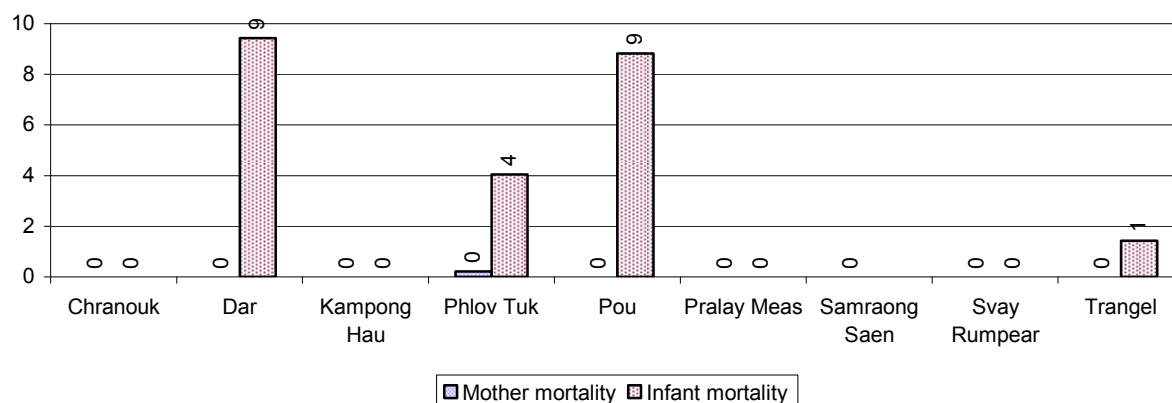
3.2 Health

3.2.1 Health Situation of Women and Children, over 3 years

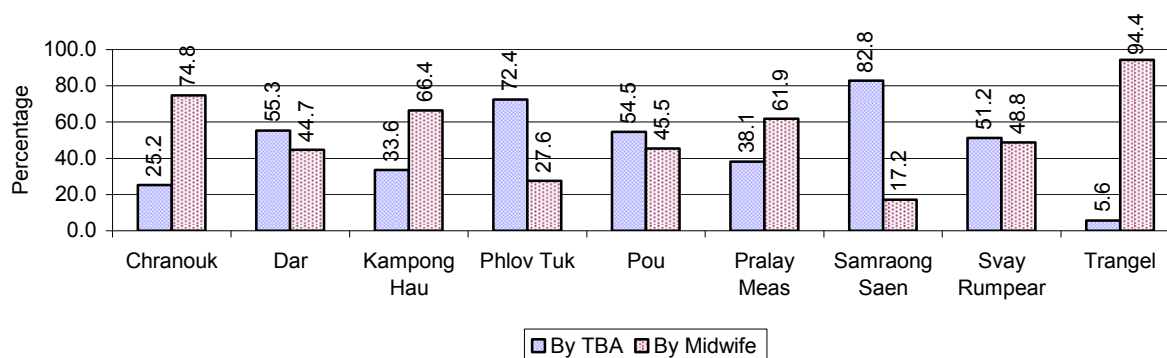
Description	2006	2007	2008
Number families with a birth during the year	774 families	1,125 families	811 families
Number of women who had their baby delivered by a TBA	472 person(s)	661 person(s)	369 person(s)
Percentage of women who had their baby delivered by a TBA	61 %	59 %	45 %
Number of women who had their baby delivered by a midwife	302 person(s)	464 person(s)	442 person(s)
Percentage of women had their baby delivered by a midwife	39 %	41 %	55 %
Number of mothers who died within 1 month of giving birth	3 person(s)	4 person(s)	1 person(s)
Mothers who died within 1 month of giving birth per 100,000 families having a delivery	388	356	123
Number of infants born during the year	774 person(s)	1,125 person(s)	814 person(s)
Number of Infants who died within 1 month	13 person(s)	24 person(s)	15 person(s)
Infants mortality within 1 month per 1,000 births	17	21	18
Number of children who died below the age of 5.	44 person(s)	33 person(s)	25 person(s)
Number of infants, aged 9-12 months, born during the year	600 person(s)	928 person(s)	604 person(s)
Nr. infants, aged 9-12 months, not receiving full immunization	30 person(s)	14 person(s)	27 person(s)
% of 9-12 months infants, not receiving full immunization	5 %	2 %	4 %

Note: TBA = Traditional Birth Attendant

3.2.2 Mothers dying within 0 days to 1 month of giving Birth and Infants dying within 1 month in 2008, by Commune

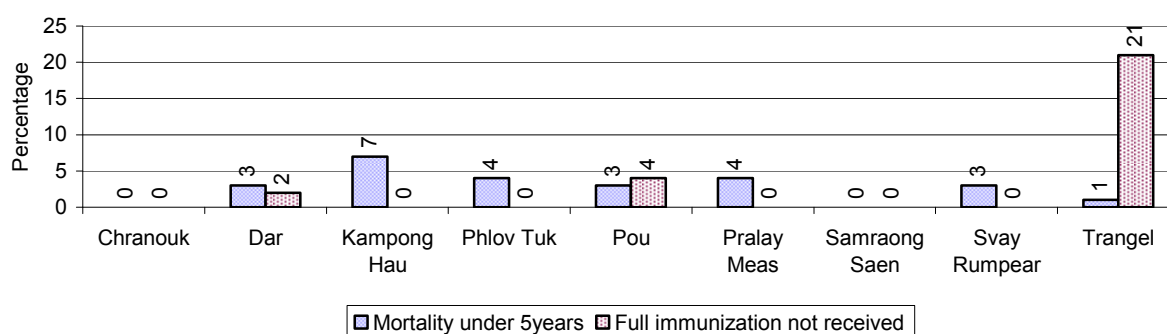


3.2.3 Percentage of Women delivering with a TBA or Midwife, by Commune



Note: Calculated as a percentage of total deliveries

3.2.4 Percentage of Children dying below 5 & of 9-12 months not receiving full Immunization, by Commune, in 2008



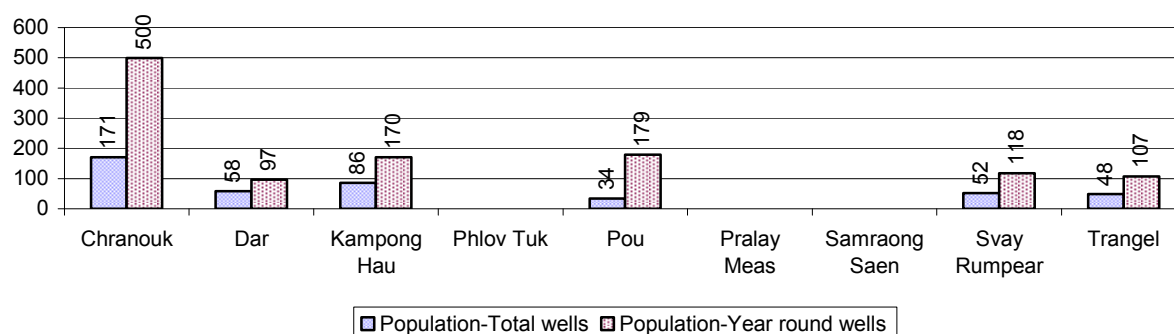
Note: Mortality rate calculated as a percentage of the total 5 year old population. Lack of immunization received calculated as a percentage of the total number 9-12 months olds there are

3.3 Water and Sanitation

3.3.1 Number of different types of Wells over 3 years

Type of wells	Number of wells by year		
	2006	2007	2008
<i>Total number of pumped or mixed wells</i>	47	59	241
Year-round usable pumped or mixed wells	23	28	182
Dry season unusable pump or mixed wells	24	31	59
Pump or mixed wells needing repair/rehabilitation	17	30	53
<i>Total number of ring wells</i>	348	361	374
Year-round usable ring wells	56	70	75
Dry season unusable ring wells	292	291	299
Ring wells needing repair/rehabilitation	132	185	165
<i>Total number of unprotected dug wells</i>	40	48	33
Year-round usable unprotected dug wells	7	10	5
Dry season unusable unprotected dug wells	33	38	28

3.3.2 Ratio of People to Wells, by Commune, in 2008

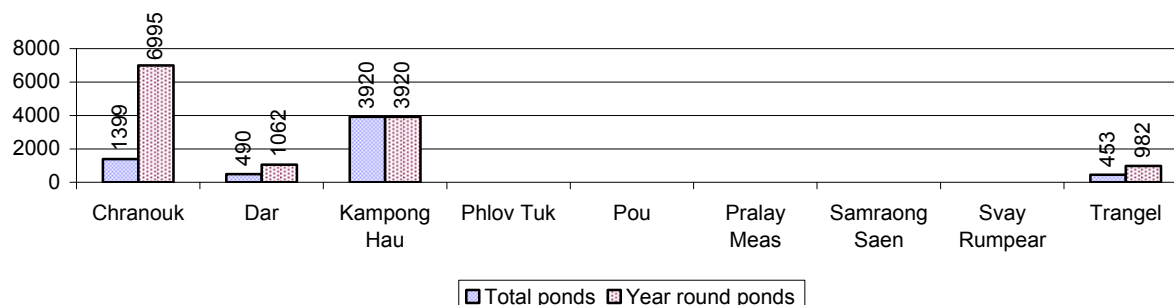


Note: Year-round wells excluding unprotected wells

3.3.3 Potable Ponds over 3 years

Type of Pond	2006	2007	2008
<i>Total number of normal-type ponds</i>	33 pond	27 pond	33 pond
Year-round usable normal-type ponds	8 pond	9 pond	15 pond
Dry season unusable normal-type ponds	25 pond	18 pond	18 pond
Normal-type ponds needing repair/rehabilitation	22 pond	31 pond	32 pond
<i>Total number of filter ponds</i>	8 pond	0 pond	0 pond
Year-round usable filter ponds	8 pond	0 pond	0 pond
Filter ponds, dry season unusable	0 pond	0 pond	0 pond
Filter ponds needing repair/rehabilitate	1 pond	9 pond	2 pond

3.3.4 Ratio of People to normal Ponds, by Commune in 2008



3.3.5 Ratio of People to Filter Ponds, by Commune, in 2008

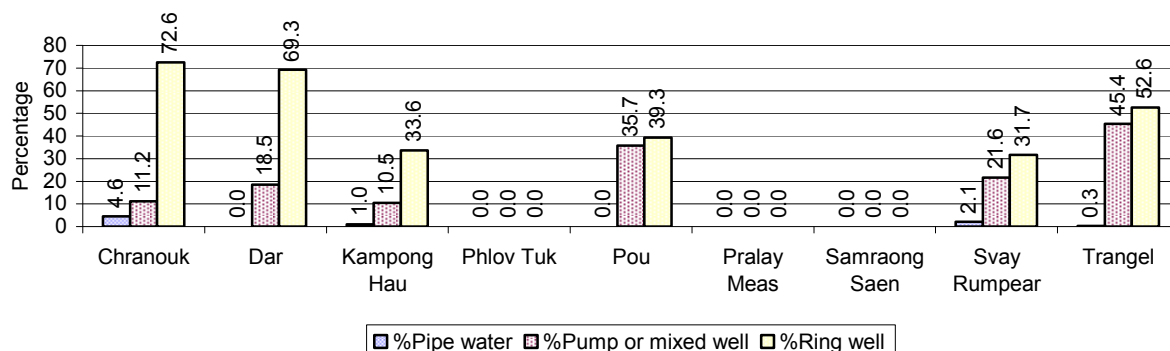
There were no filter ponds in this District in 2008

3.3.6 Source of potable Water for Households, over 3 years

Water sources	2006	2007	2008	
	%	%	%	Number
Families using water from purification system	0%	0 %	1 %	117 families
Families using water from pump, mixed wells	7%	5 %	18 %	1,758 families
Families using water from ring wells and open dug wells	41%	45 %	41 %	4,045 families
Families using water from pond	7%	4 %	2 %	230 families
Families using water from rain water storage	1%	1 %	2 %	155 families
Families using water from rivers, lakes, natural ponds and reservoirs	44%	45 %	35 %	3,462 families

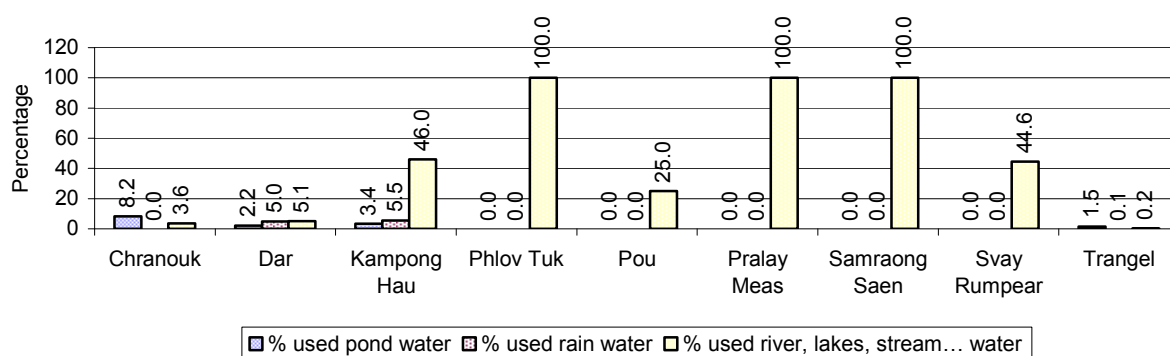
Note: Calculated as a percentage of the total number of families.

3.3.7 Percentage Families using different Water Sources, by Commune, in 2008



Note: Calculated as a percentage of the total number of families in each commune

3.3.8 Percentage Families using Water from Rain Water Storage, Ponds and natural Sources (rivers/lakes/natural ponds/reservoirs), by Commune, 2008



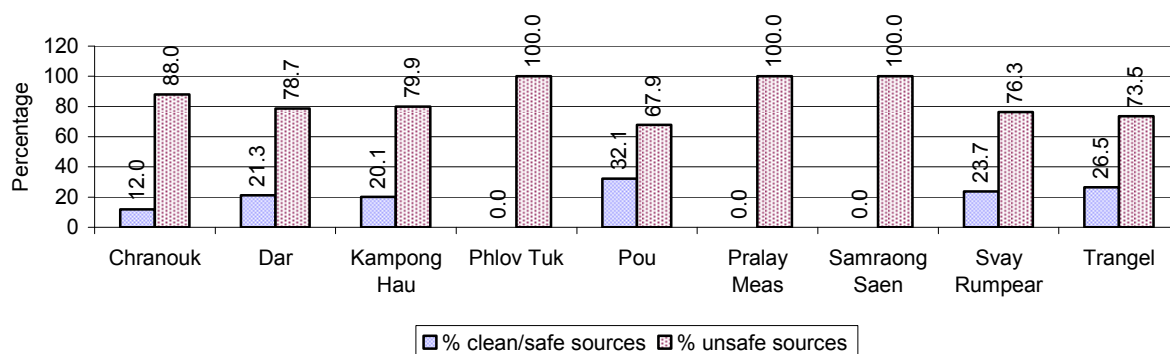
Note: Calculated as a percentage of the total number of families in each commune

3.3.9 Drinking Water Sources in the dry Season over 3 years

Percentage Families that get drinking water from:	2006	2007	2008	
	%	%	%	Number
from clean/safe sources	10 %	6 %	18 %	1,730 families
from unsafe sources	90 %	94 %	82 %	8,037 families

Note: Calculated as a percentage of the total number of families.

3.3.10 Percentage Families using safe and unsafe Water Sources in the dry Season, by Commune, in 2008



Note: Calculated as a percentage of the total number of families in each commune.

3.3.11 Drinking Water Purification by Households, over 3 years

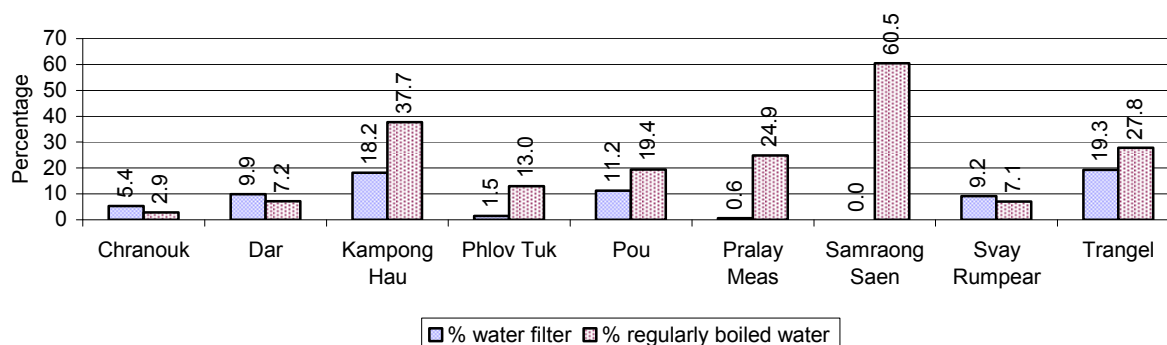
This table shows the different ways families make water safe for drinking.

Families, who:	2006 %	2007 %	2008	
			%	Number
Filter water for drinking	1%	5%	10 %	968 families
Boil water for drinking	21%	14%	19 %	1,853 families

Note: Calculated as a percentage of the total number of families

3.3.12 Percentage Families filtering Water or regularly boiling Water, by Commune, in 2008

This graph shows the different ways families make drinking water safe.



Note: Calculated on as a percentage of the total number of families in each commune.

3.3.13 Families' access to Water, over 3 years

Families access to water	2006 %	2007 %	2008	
			%	Number
Families with water at home or in less then 150m	21%	17%	18 %	1,727 families
Families with water 150m or more away from home	14%	40%	12 %	1,180 families

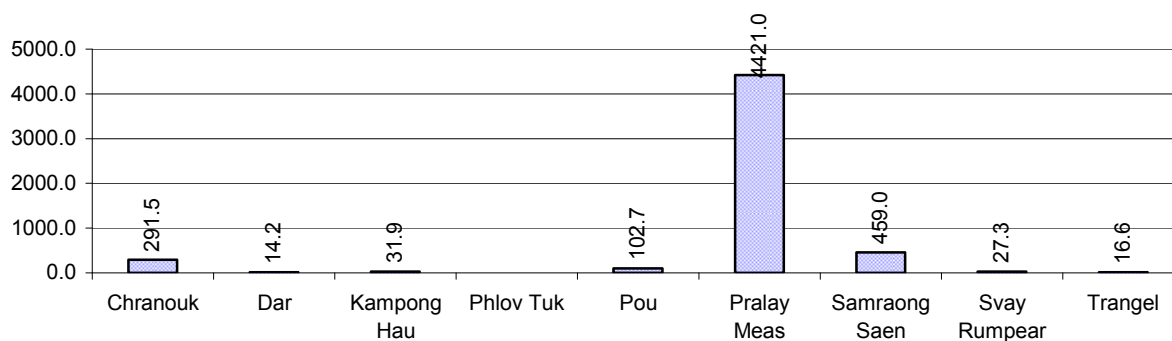
Note: Calculated as a percentage of the total number of families

3.3.14 Ratio of people to Latrines over 3 years

Description	2006 Ratio	2007 Ratio	2008	
			Ratio	Number
Ratio of people to latrines	69.4	106.2	35.3	1,336.0

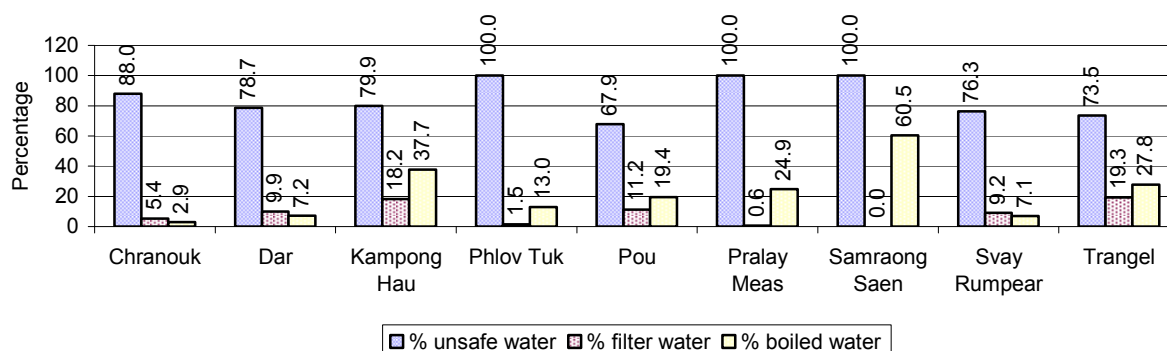
Note: Ratio calculated by dividing the number of houses with latrines by the total population

3.3.15 Ratio of People to Latrines, by Commune, in 2008



Note: Ratio calculated by dividing the number of houses with latrines by the total population in a Commune.

3.3.16 Percentage of Families drinking boiled, filtered or unsafe Water, by Commune, in 2008



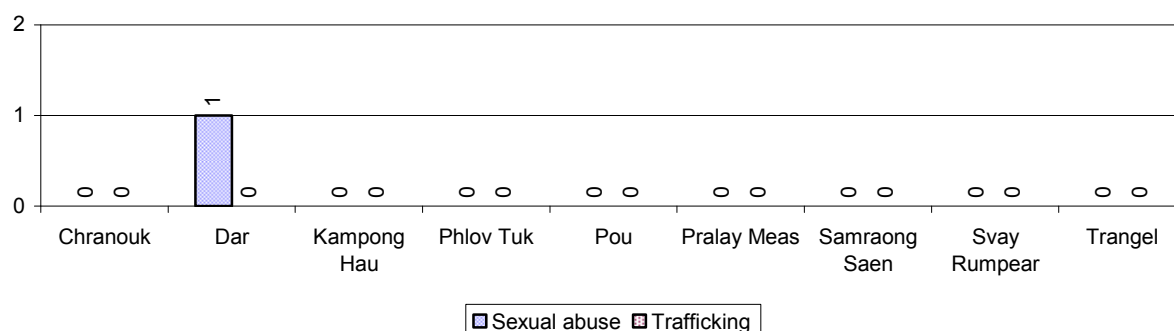
Note: Calculated as a percentage of the total number of families in each commune.

3.4 Vulnerable groups

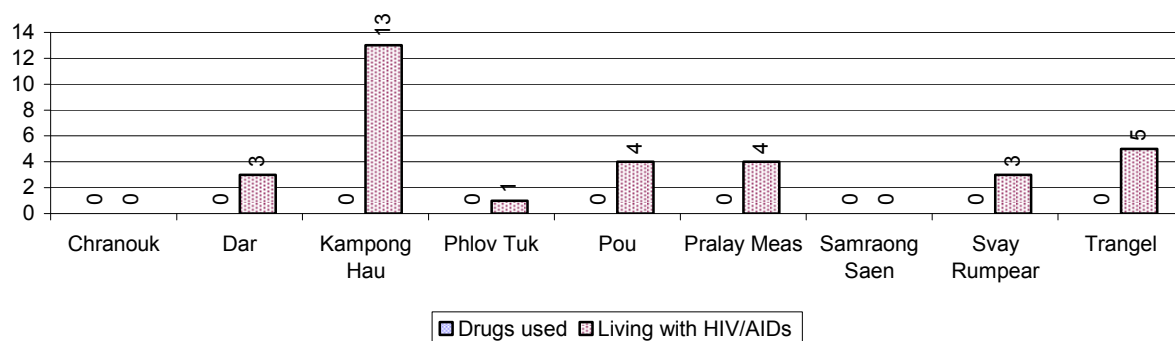
3.4.1 Vulnerable Groups in need of special Protection over 3 years

Vulnerable groups	2006	2007	2008
Victims of sexual abuse	6 person(s)	8 person(s)	1 person(s)
Victims of human trafficking	0 person(s)	0 person(s)	0 person(s)
Families with family member(s) using drugs	0 families	21 families	0 families
Families with family member(s) living with HIV/AIDS	27 families	37 families	33 families
Children under 18 yrs old whose parent died of AIDS	56 person(s)	60 person(s)	73 person(s)
Orphaned/abandoned children under 18 yrs old (all cases)	208 person(s)	252 person(s)	180 person(s)
Elderly persons without guardian	92 person(s)	105 person(s)	84 person(s)
Disabled people able to earn an income	20 person(s)	34 person(s)	33 person(s)
Disabled people unable to earn an income	24 person(s)	33 person(s)	34 person(s)
Disabled people under 18 yrs old	25 person(s)	9 person(s)	21 person(s)
Victims of natural disasters	653 families	180 families	333 families
Victims of land mines and unexploded weapons	23 person(s)	3 person(s)	0 person(s)

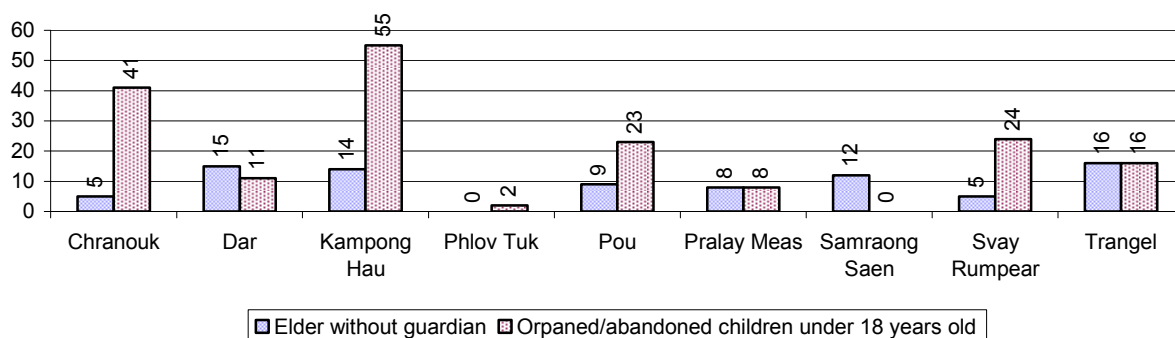
3.4.2 Registered Victims of sexual Abuse or Trafficking, by Commune, for 2008



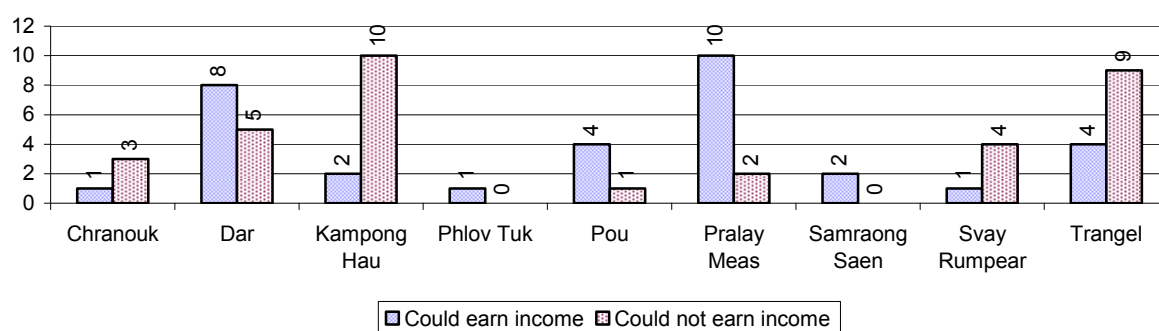
3.4.3 Registered Families with Member(s) using Drugs or living with HIV/AIDS, by Commune, for 2008



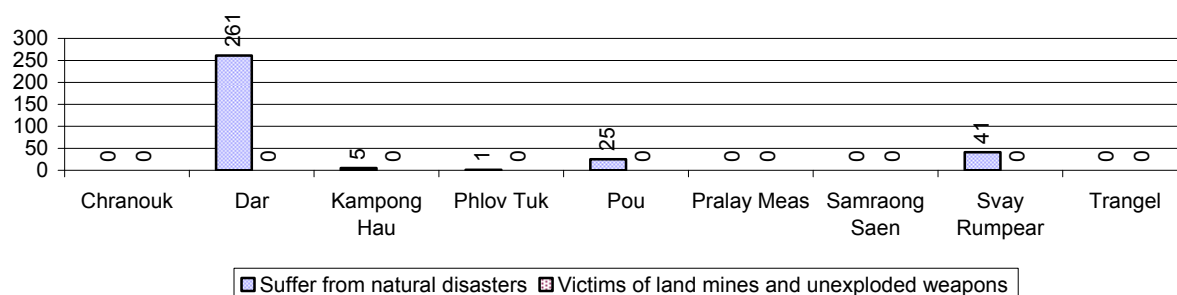
3.4.4 Elderly Persons without a Guardian and orphaned/abandoned Children under 18 years old, by Commune, for 2008



3.4.5 Number of disabled People who could or could not earn an Income, by Commune, for 2008



3.4.6 Number of Families who suffered from natural Disasters, and number of Victims of Land Mines and unexploded Weapons, by Commune, in 2008



3.5 Migration

3.5.1 Migration over 3 years

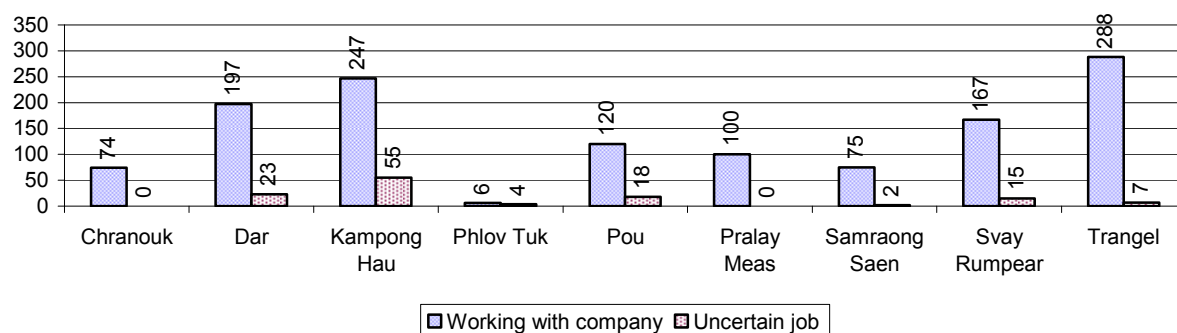
Description	2006	2007	2008
Number of families permanently in-migrated	50 families	47 families	120 families
Total number of people	260 person(s)	202 person(s)	464 person(s)
Total number of female	125 person(s)	109 person(s)	250 person(s)
Number of families permanently out-migrated	66 families	55 families	122 families
Total number of people	238 person(s)	221 person(s)	455 person(s)
Total number of female	118 person(s)	111 person(s)	224 person(s)
Number of families staying temporarily	26 families	23 families	28 families
Total number of people	112 person(s)	88 person(s)	97 person(s)
Total number of female	56 person(s)	46 person(s)	44 person(s)

3.5.2 Job Migration

Description	2006	2007	2008
Number of people migrated to work with company/factory	4%	5%	6%
Number of people migrated to work, but have uncertain jobs	2%	1%	1%

Note: Calculated as a percentage of the total population of 18-60 year olds

3.5.3 Number of People working outside their home Villages in a Company/Factory or with an uncertain Job in 2008

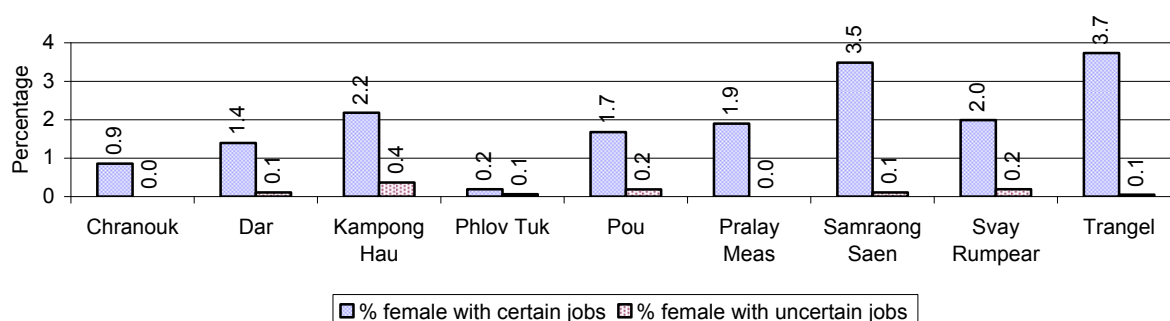


3.5.4 Female migration over 3 years

Description	2006 %	2007 %	2008	
			%	Number
Total number of migrants	3.1%	2.7%	3.0%	1,398 person(s)
Number of female migrants	2.1%	1.8%	2.0%	953 person(s)
Total number of migrants, who go to work with company/factory (with certain jobs)	2.0%	2.3%	2.7%	1,274 person(s)
Number of female migrants with certain jobs	1.5%	1.7%	1.9%	890 person(s)
Total number of migrants with uncertain jobs	1.1%	0.3%	0.3%	124 person(s)
Number of female migrants with uncertain jobs	0.5%	0.1%	0.1%	63 person(s)

Note: Calculated as a percentage of the total population

3.5.5 Percentage female Migrants with certain and uncertain Jobs, by Commune, in 2008



Note: Calculated as a percentage of the total population of the commune

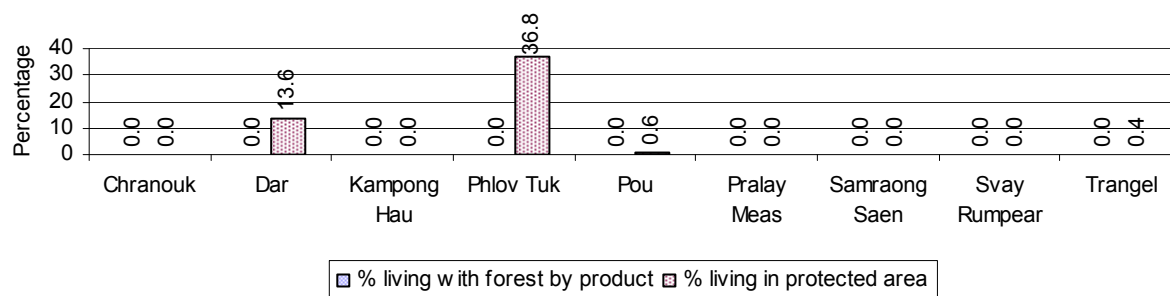
4 Natural Resources and Environment (NRE)

4.1 Families involved with NRE issues over 3 years

Description	2006 %	2007 %	2008	
			%	Number
Families living with forest by products	0 %	0 %	0 %	0 families
Families living in a protected area	0 %	1 %	4 %	424 families
Houses with access to garbage collection service	0 %	0 %	1 %	85 families
Families affected by environmental pollution	0 %	1 %	7 %	636 families
Families using chemical fertilizer	34 %	41 %	37 %	3,634 families
Families using chemical pesticide	29 %	38 %	31 %	3,033 families

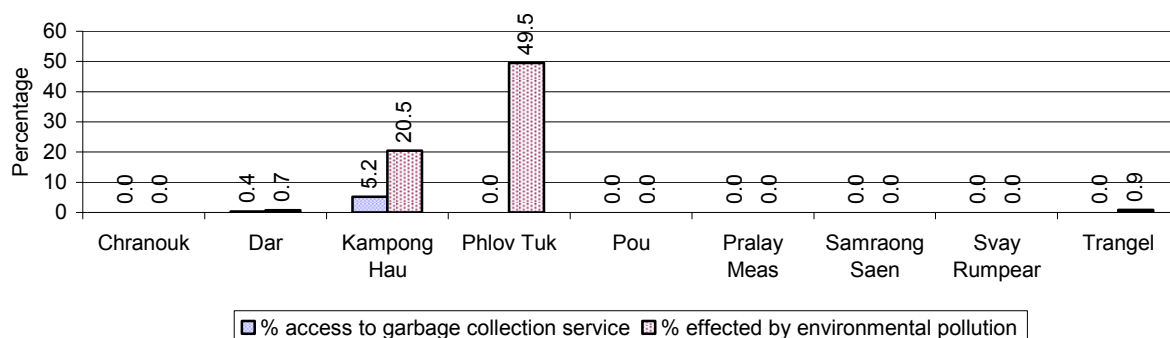
Note: Calculated as a percentage of the total number of families

4.2 Percentage of Families involved with Natural Resource issues, by Commune, for 2008



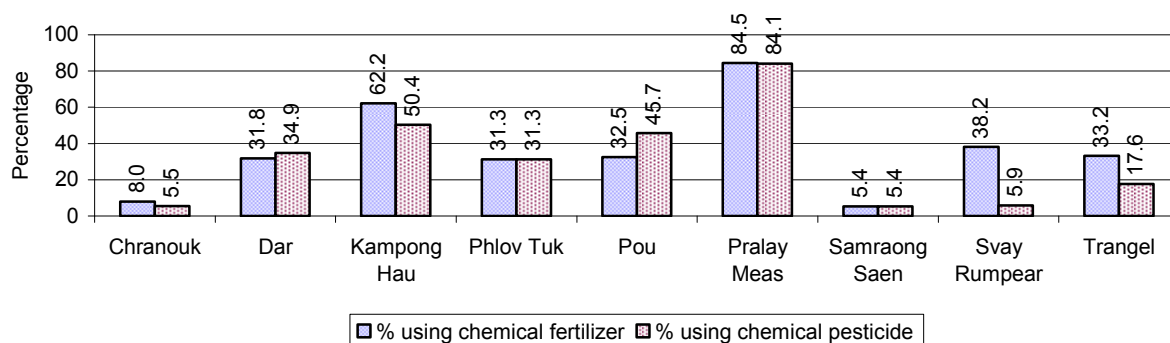
Note: Calculated as a percentage of the number of families in each commune

4.3 Percentage Houses with access to Garbage collection and Families affected by environmental Pollution, by Commune, for 2008



Note: Garbage collection is calculated as a percentage of the total number of houses in each commune and families affected by environmental pollution is calculated as a percentage of the total number of families in each commune.

4.4 Percentage Families using chemical Fertilizer and chemical Pesticides, by Commune, for 2008



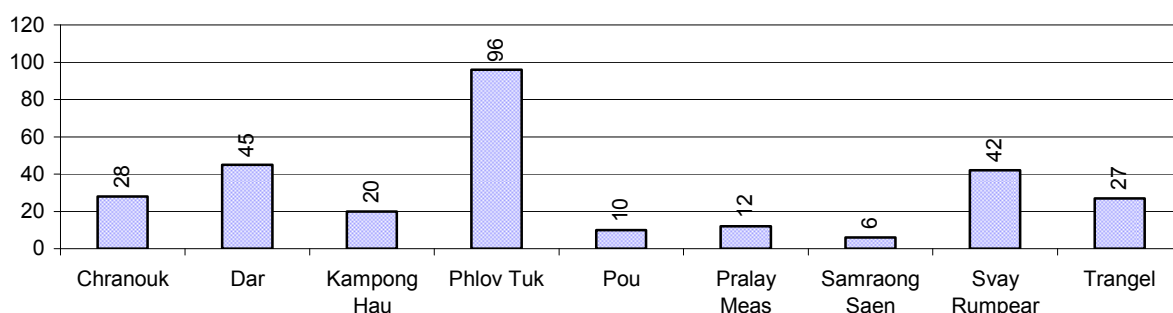
Note: Calculated as a percentage of the total number of families in each commune

5 Administration and Security

5.1 Birth Registration across 3 years

Description	2006	2007	2008
Number of infants to be registered	761 person(s)	1,101 person(s)	799 person(s)
Number of unregistered infants the year	251 person(s)	538 person(s)	286 person(s)
Percentage of infants unregistered	33 %	49 %	36 %

5.2 Number of unregistered Infants born in 2008, by Commune

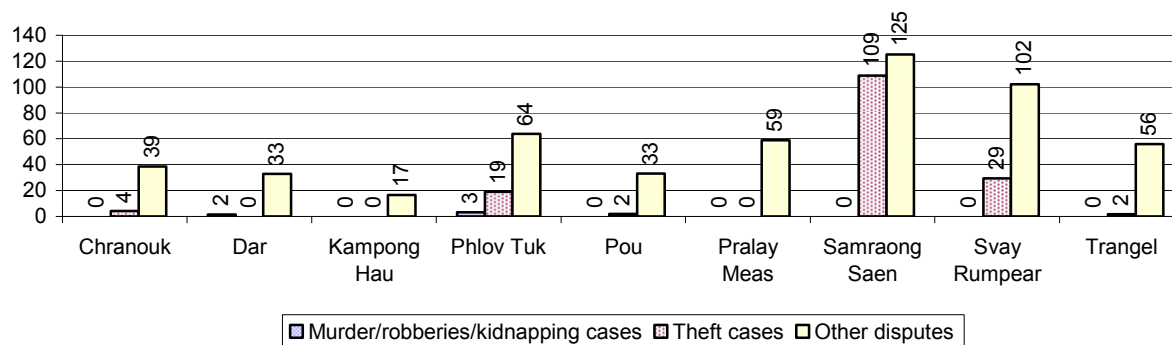


5.3 Registered criminal Cases over 3 years

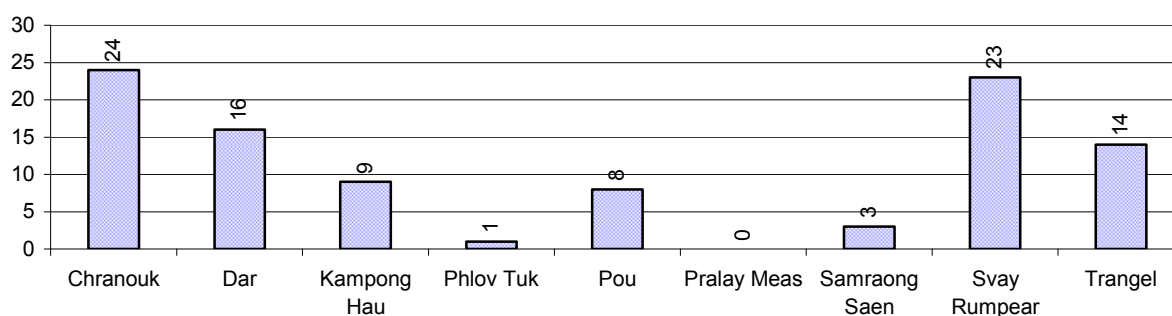
Description	2006	2007	2008
Murders, robberies and kidnapping cases	4 case(s)	9 case(s)	2 case(s)
Theft cases	50 case(s)	62 case(s)	48 case(s)
land dispute cases	86 case(s)	128 case(s)	98 case(s)
Other disputes cases	208 case(s)	242 case(s)	238 case(s)

Note: this reflects only registered criminal cases

5.4 Registered criminal Cases per 10,000 people, by Commune, for 2008



5.5 Number of registered Land Disputes, by Commune, in 2008

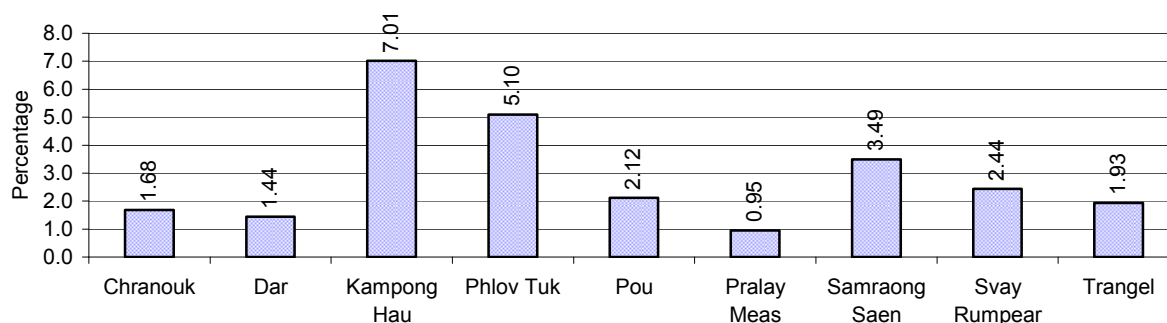


6 Gender

6.1 Registered Domestic Violence over 3 years

Description		2006	2007	2008
Families experiencing domestic violence		214 families	285 families	281 families(s)
% families experiencing domestic violence		2 %	3 %	3 %
Domestic violence cases reported by village chiefs		119 case(s)	96 case(s)	128 case(s)
Type	Physical violence	25 case(s)	34 case(s)	59 case(s)
	Sexual violence	7 case(s)	3 case(s)	4 case(s)
	Mental violence	28 case(s)	28 case(s)	46 case(s)
	Household economic violence	59 case(s)	31 case(s)	19 case(s)
Number of administrative decisions on domestic violence		119 case(s)	96 case(s)	100 case(s)
% of administrative decisions on domestic violence		100 %	100 %	78 %

6.2 Percentage of registered cases of Families experiencing domestic Violence, by Commune, in 2008



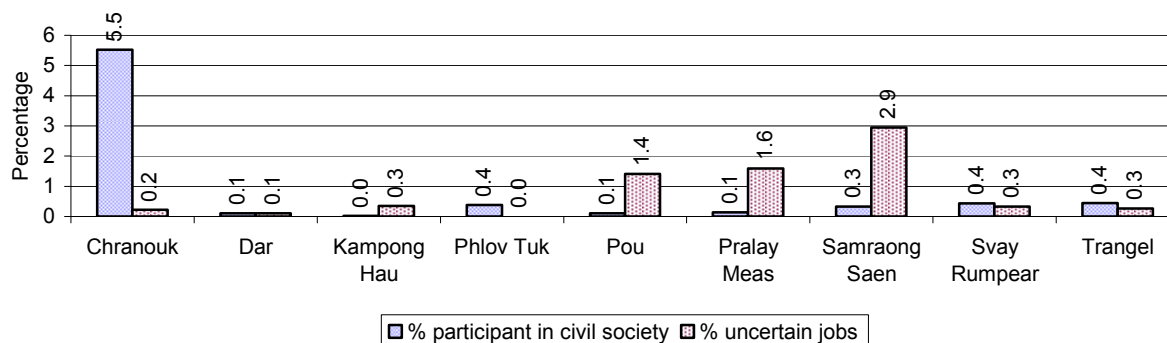
Note: Calculated as a percentage of the total number of families in each commune

6.3 Women's involvement over 3 years

Description	2006 %	2007 %	2008	
			%	Number
People participating in civil society	0%	1%	2%	1,032 person(s)
Women participating in civil society	0%	0%	1%	475 person(s)
People, 18-60 yrs, with uncertain/irregular jobs	2%	1%	1%	260 person(s)
Women, 18-60 yrs, with uncertain/irregular jobs	1%	0%	1%	123 person(s)

Note: Participation can be in NGOs, CBOs, credit groups, women's unions, parties and other civil society organizations. The first section is calculated as a percentage of the total population. The second section is calculated as a percentage of the total 18-60 year old population.

6.4 Percentage of Female Participants in Civil Society and of 18-60 year women with uncertain Jobs, by Commune, in 2008



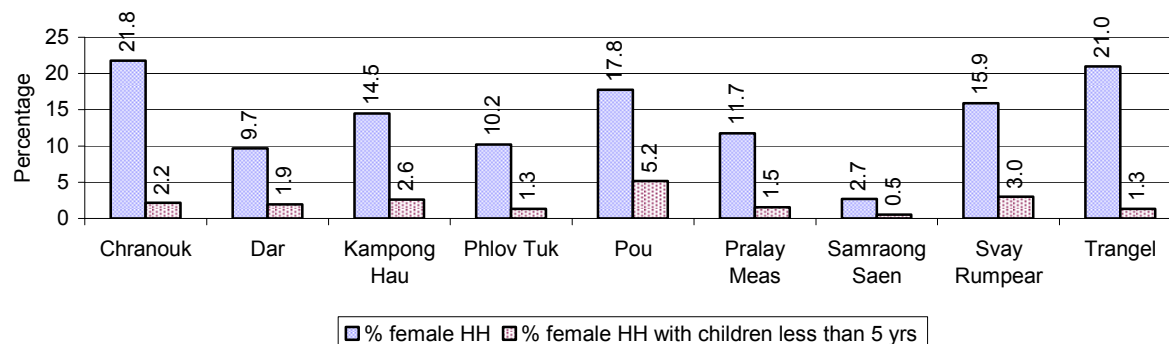
Note: Percentage of female participants in civil society is calculated as a percentage of the total population per commune. The percentage of 18-60 years old women with uncertain jobs is calculated as a percentage of the total 18-60 year old population per commune.

6.5 Female-headed Households over 3 years

Families with:	2006 %	2007 %	2008	
			%	Number
Households in which a woman is the family head	15%	17%	15%	1,498 families
Households in which a woman is the family head with children of less than 5 yrs	3%	2%	2%	232 families

Note: Calculated as a percentage of the total number of families

6.6 Percentage female-headed Households and with Children of less than 5 years old, by Commune, in 2008



Note: Calculated as a percentage of the total number of families in each commune
HH: Headed Household

7 Indigenous People in the District

7.1 Ethnic Minorities in the District over 3 years

Race of indigenous	2006		2007		2008	
	# families	# population	# families	# population	# families	# population
Phnong	0 families	0 person(s)	0 families	0 person(s)	0 families	0 person(s)
Kouy	0 families	0 person(s)	0 families	0 person(s)	0 families	0 person(s)
Stieng	0 families	0 person(s)	0 families	0 person(s)	0 families	0 person(s)
Mil	0 families	0 person(s)	0 families	0 person(s)	0 families	0 person(s)
Kroal	0 families	0 person(s)	0 families	0 person(s)	0 families	0 person(s)
Thmorn	0 families	0 person(s)	0 families	0 person(s)	0 families	0 person(s)
Khaonh	0 families	0 person(s)	0 families	0 person(s)	0 families	0 person(s)
Tompouonn	0 families	0 person(s)	0 families	0 person(s)	0 families	0 person(s)
Charay	0 families	0 person(s)	0 families	0 person(s)	0 families	0 person(s)
Kroeung	0 families	0 person(s)	0 families	0 person(s)	0 families	0 person(s)
Kavet	0 families	0 person(s)	0 families	0 person(s)	0 families	0 person(s)
Saouch	0 families	0 person(s)	0 families	0 person(s)	0 families	0 person(s)
Lun	0 families	0 person(s)	0 families	0 person(s)	0 families	0 person(s)
Kachak	0 families	0 person(s)	0 families	0 person(s)	0 families	0 person(s)
Praov	0 families	0 person(s)	0 families	0 person(s)	0 families	0 person(s)
Others	0 families	0 person(s)	0 families	0 person(s)	0 families	0 person(s)
Total	0 families	0 person(s)	0 families	0 person(s)	0 families	0 person(s)

Note: "Others" refer to other ethnic groups which are not listed.

7.2 Other Minorities in the District over 3 years

Minority	2006		2007		2008	
	# families	# population	# families	# population	# families	# population
Khmer Islamic	0 families	0 person(s)	0 families	0 person(s)	4 families	10 person(s)
Vietnamese	25 families	202 person(s)	61 families	373 person(s)	67 families	347 person(s)
Laos	0 families	0 person(s)	0 families	0 person(s)	0 families	0 person(s)

Note: Number of indigenous and minority population are additional data, so some village may not recorded.

SECTION C: PLANS AND PROJECTS

8 Priorities and Plans

8.1 Priorities of Commune Councils for 2009 in the District by Sector

The District Priority Activity Matrix (DPAM) data are taken from the CDPD. The DPAM is used for the District Integration Workshop (DIW), to show what kind of projects the commune has proposed in their Commune Investment Plan (CIP) for 2009. Donors, departments and other agencies then consider which projects they want to support and which projects they are not interested in. This results in Temporary Agreements between the Commune Council and the Supporter (NGO, Department, private donor, etc), as shown in table 8.2

No.	Project Name	Chranouk	Dar	Kampong Hau	Phlov Tuk	Pou	Pralay Meas	Samraong Saen	Svay Rumpear	Trangel	Req.Project
		40401	40402	40403	40404	40405	40406	40407	40408	40409	Total
Economic											
1	Compost fertilizer training			6 training		6 training		1 training	5 training	7 training	5
2	Rice seed production training			6 training							1
3	Subsidiary cropping technique training				2 training		6 training				2
4	Rice cultivation technique training									7 training	1
5	Animal vaccination request	1 training		6 time		3 training			1500 Head		4
6	Village veterinary training	1 training									1
7	Animal raising training				2 training	6 time			1500 Head	1 time	4
8	Pig raising training			6 training						7 training	2
9	Livestock feed producing training								1 training		1
10	Compost making hut building					30 Compost-heap					1
11	Rice seed request	40 Kg					30 T				2
12	Calf for raising request	40 Head									1
13	Sow for raising request	80 Head			120 Head		120 Head				3
14	Vegetable seeds request				5 T						1
15	Vegetable seed and farming tools request	2 time									1

District Data Book 2009: District Profile

No.	Project Name	Chranouk	Dar	Kampong Hau	Phlov Tuk	Pou	Pralay Meas	Samraong Saen	Svay Rumpear	Trangel	Req.Project
		40401	40402	40403	40404	40405	40406	40407	40408	40409	Total
16	Fish raising training						6 training				1
17	Culvert construction						20 piece				1
18	Earth road repairing			4000 m		2000 m			1280 m	3920 m	4
19	Laterite/natural gravel road repairing	12500 m	4 Line			1600 m		6200 m	1460 m		5
20	Culvert repairing		12 place								1
21	Water gate construction		3 place								1
22	Water gate plug construction					2000 m	2 place				2
23	Canal repairing		3 Line	3500 m	1100 m	420 m	900 m	4000 m	5650 m	4773 m	9
24	Dam repairing	2610 m	4 place			420 m			6155 m	4215 m	5
25	Irrigation pond repairing	3 place									1
26	Cash credit						1 time				1
27	Rice seed bank							2 Kg			1
28	Cow bank					60 Head					1
29	Pig bank					120 Head					1
30	Market place creation/construction						3 place				1
Social											
1	Health/hygiene education for local people									7 training	1
2	Food safety and hygiene education									7 training	1
3	Women and children health care education					6 training				7 training	2
4	Transmitting disease prevention education			6 training		6 training					2
5	Dengue fever education programme									7 training	1
6	Health staffs need at health				2						1

District Data Book 2009: District Profile

No.	Project Name	Chranouk	Dar	Kampong Hau	Phlov Tuk	Pou	Pralay Meas	Samraong Saen	Svay Rumpear	Trangel	Req.Project
		40401	40402	40403	40404	40405	40406	40407	40408	40409	Total
	center				person						
7	Latrine construction	1 place		1427 toilet		1025 toilet	50 place	330 toilet	1130 toilet	1063 toilet	8
8	Village health post construction			1 building							1
9	Village health post repairing				1 place						1
10	Water filter equipment supply			1427 Container		1025 Container		338 Container	1130 Container	1063 Container	5
11	Water supply				1 place		2 place				2
12	Family water jars provision				9000 m		3 place		320 Container		3
13	Pump wells construction			30 well		50 well					2
14	Ponds repairing	2 place									1
15	Literacy class		2 training			2 class		2 training			3
16	Junior high school construction		1 building				1 building		1 building	1 building	4
17	School office construction			4 building					4 building	5 building	3
18	School building					28 room					1
19	Primary school creation/construction		3 building		1 building		1 building		6 room		4
20	Kindergarten school construction/repair	3 building	4 building			1 building		1 building		7 building	5
21	Pre-school teacher/kid keeper support						1 person				1
22	Kindergarten equipment provision						1 time				1
23	Poor pupils enrollment support			1 time						1 time	2

District Data Book 2009: District Profile

No.	Project Name	Chranouk	Dar	Kampong Hau	Phlov Tuk	Pou	Pralay Meas	Samraong Saen	Svay Rumpear	Trangel	Req.Project
		40401	40402	40403	40404	40405	40406	40407	40408	40409	Total
24	Scholarship provision to poor pupils			1 Course/year		6 training				1 Course/year	3
25	Dormitory construction for teacher/pupils								5 building		1
26	Emergency relief		1 Course/year								1
27	Flood refuge mound/temporary shelter provision						1 place				1
28	Khmer culture awareness education				2 time		6 time				2
29	Khmer "Pinpeat" music skill training/provision						1 Team				2
NREM											
1	Environmental awareness and law education	1 training	5 training		3 time	6 training	6 time		5 training	7 training	7
2	Fishery law education	1 training			3 time	6 time	6 time	1 training		7 training	6
3	Firewood saving cooking stove									1063 set	1
4	Bamboo forest plantation/coservation									7 training	1
5	Education on the effect of polluted water			6 training		6 training		1 training			3
6	NREM education campaign	1 training	1 training							7 training	3
7	NREM programme			6 training					5 training		2
8	Forestry protection poster setting up								5 piece	7 piece	2
9	Establishment of tree nursery				1 place						1

District Data Book 2009: District Profile

No.	Project Name	Chranouk	Dar	Kampong Hau	Phlov Tuk	Pou	Pralay Meas	Samraong Saen	Svay Rumpear	Trangel	Req.Project
		40401	40402	40403	40404	40405	40406	40407	40408	40409	Total
10	Organizing tree planting day								1 time		1
11	Tree planting promotion/dissemination							1 training	5 training		2
12	Flooded forest rehabilitation/planting						4 ha				1
13	Illegal fishing prevention		5 training		3 set	6 time	6 set		5 time		5
14	Flooded forest clearance prevention	1 training						1 training			2
15	Community flooded forestry support								5 training		1
16	Fishing boundary identification								5 training		1
17	Community forestry activities support								5 training		1
18	Wildlife hunting prevention strengthening								5 training		1
19	Wildlife protection enforcement					6 piece			5 piece		2
20	Management/conservation of natural resources strengthening						4 place				1
21	Public rubbish bin sitting			20 Container							1
22	New sewage system construction			640 m							1
23	Household waste management education			3 training							1
24	Biogas cooking project					60 set				70 set	2
25	Waste management education			5 piece							1
Administration and Security											

District Data Book 2009: District Profile

No.	Project Name	Chranouk	Dar	Kampong Hau	Phlov Tuk	Pou	Pralay Meas	Samraong Saen	Svay Rumpear	Trangel	Req.Project
		40401	40402	40403	40404	40405	40406	40407	40408	40409	Total
1	CC capacity strengthening		2 training						1 training		2
2	Administration and commune law training			2 training		2 training			1 training	2 training	4
3	Facilitation skills training									2 training	1
4	Human rights and law training									2 training	1
5	Commune office construction/renovation				1 training	1 building				1 building	3
6	Radio communication provision				3 set		4 set				2
7	Major equipment to support commune administration				1 set						1
8	Office supply for commune admin operation						3 set				1
9	Boat/motor boat request				3 set		12 set				2
10	Land law dissemination			6 training		6 training		1 training		7 training	4
11	Provision of land titles/certificates		450 doc								1
12	Land use planning					1 training			1 training		2
13	Village/commune border identification			6 time		1 training			2 training	1 training	4
14	Drug and related law education			6 training					5 training		2
15	Gambling control/elimination activation	1 training	5 training								2
16	Stealing elimination activation							1 training			1
17	Police post construction/renovation						1 set				1
18	Traffic accident prevention								5 training		1
19	Law/regulation	2 time	5		3 time			1 training			4

District Data Book 2009: District Profile

No.	Project Name	Chranouk	Dar	Kampong Hau	Phlov Tuk	Pou	Pralay Meas	Samraong Saen	Svay Rumpear	Trangel	Req.Project
		40401	40402	40403	40404	40405	40406	40407	40408	40409	Total
	dissemination		training								
20	Human right and related law education					6 training					1
21	Penal and civil law dissemination						6 time				1
Gender											
1	Gender mainstreaming concept training							1 training			1
2	Women role in development strengthening/dissemination						6 time		5 training		2
3	Gender mainstreaming among local people	1 training	5 training	6 training							3
4	Gender concept/equity mainstreaming				3 time		6 training				2
5	Gender and child rights dissemination					6 training					1
6	Scholarship provision to female pupil								1 Course/year		1
7	Women & Children FP strengthening			2 training		1 training			3 time	3 training	4
8	Woman and children's rights dissemination	1 training						1 training			2
9	Women international day organizing					1 time				1 time	2
10	Children's international day celebration			1 time		1 time					2
11	Women/children rights alleviation support									7 training	1
12	Children's rights advocacy			4 time						4 time	2
13	Women vocational training							1 training			1
14	Law against domestic violence dissemination	1 training	5 training	6 training	3 time	6 training		1 training		7 training	7

District Data Book 2009: District Profile

No.	Project Name	Chranouk	Dar	Kampong Hau	Phlov Tuk	Pou	Pralay Meas	Samraong Saen	Svay Rumpear	Trangel	Req.Project
		40401	40402	40403	40404	40405	40406	40407	40408	40409	Total
15	Rescue children & women from violence								5 training		1
16	Child protection network formation/strengthening			6 training							1
17	Children's labor exploitation elimination		5 training								1

Source: CDPD – District Priority Matrix

8.2 Temporary Agreements by Commune, for 2009²

At the District Integration Workshop (DIW) the Supporters (donors, agencies, private donors, NGOs, etc.) identify which projects/activities they would like to support or they put forward their own projects to be implemented in a particular commune. Once there is agreement between Commune Councils and Supporters on specific projects a **Temporary Agreement** is signed by the commune and the Supporter to show their mutual commitment to the identified projects/activities.

It is important to keep in mind that such Temporary Agreements do not necessarily result in implementation.

8.2.1 Temporary Agreements for 2009 as per DIW 2008 for Commune: Chranouk

Commune GIS	Commune	Temporary Agreements				Supporter		Listed in CIP before DIW
		Project Name	Quantity	Unit	Est.Cost (K.Riels)			
Economic								
40401	Chranouk	Rice seed credit	1	time	0	World Vision International - Cambodia		<input type="checkbox"/>
40401	Chranouk	Woman cash saving group	4	time	2400	Christian Children's Fund		<input type="checkbox"/>
40401	Chranouk	Animal vaccination request	4	time	0	Department of Agriculture Forestry and Fisheries		✓
40401	Chranouk	Village veterinary training	1	training	30	World Vision International - Cambodia		✓
40401	Chranouk	Vegetable seed and farming tools request	1	time	0	World Vision International - Cambodia		✓
40401	Chranouk	Sow for raising request	1	Team	0	World Vision International - Cambodia		✓
40401	Chranouk	Calf for raising request	10	Head	0	World Vision International - Cambodia		✓
40401	Chranouk	Dam repairing	1	Line	0	World Vision International - Cambodia		✓
Social								
40401	Chranouk	Women focal point strengthening	1	training	0	Department of Women		<input type="checkbox"/>
40401	Chranouk	WCFPs capacity strengthening training	1	time	100	Department of Social and Veteran Affairs and Youth Rehabilitation		<input type="checkbox"/>
NREM								
40401	Chranouk	Environmental law and fishermen	12	time	2400	Christian Children's Fund		<input type="checkbox"/>

² Not all the data from the CDPD has been translated to English, this has resulted in some cells in the TA tables being blank.

Commune GIS	Commune	Temporary Agreements				Supporter	Funding Source	Listed in CIP before DIW
		Project Name	Quantity	Unit	Est.Cost (K.Riels)			
40401	Chranouk	Fishery law dissemination	4	time	2400	Christian Children's Fund		<input type="checkbox"/>
Administration and Security								
40401	Chranouk	Swindle cheating on woman and children awareness raising among pupils	1	time	100	Department of Social and Veteran Affairs and Youth Rehabilitation		<input type="checkbox"/>
Gender								
40401	Chranouk	Woman and children's rights dissemination	1	training	0	World Vision International - Cambodia		✓
40401	Chranouk	Law against domestic violence dissemination	1	time	0	World Vision International - Cambodia		✓

8.2.2 Temporary Agreements for 2009 as per DIW 2008 for Commune: Dar

Commune GIS	Commune	Temporary Agreements				Supporter	Funding Source	Listed in CIP before DIW
		Project Name	Quantity	Unit	Est.Cost (K.Riels)			
Economic								
40402	Dar	Road repairing, Damrey Sar	1	place	0	Department of Rural Development		<input type="checkbox"/>
Social								
40402	Dar	Emergency relief	2	training	0	World Vision International - Cambodia		✓
NREM								
40402	Dar	Environmental awareness and law education	1	training	0	Cambodian Disabled People Organization		✓
40402	Dar	Illegal fishing prevention	1	training	0	Cambodian Disabled People Organization		✓
40402	Dar	NREM education campaign	1	training	0	Cambodian Disabled People Organization		✓
Administration and Security								
40402	Dar	CC capacity strengthening	1	training	0	Department of Women		✓
Gender								
40402	Dar	Children's labor exploitation elimination	2	training	1200	World Vision International -		✓

Commune GIS	Commune	Temporary Agreements				Supporter	Funding Source	Listed in CIP before DIW
		Project Name	Quantity	Unit	Est.Cost (K.Riels)			
						Cambodia		
40402	Dar	Law against domestic violence dissemination	1	training	800	World Vision International - Cambodia		✓

8.2.3 Temporary Agreements for 2009 as per DIW 2008 for Commune: Kampong Hau

Commune GIS	Commune	Temporary Agreements				Supporter	Funding Source	Listed in CIP befor DIW
		Project Name	Quantity	Unit	Est.Cost (K.Riels)			
Economic								
40403	Kampong Hau	Earth road repairing	72000	m	45000	World Food Programme		<input type="checkbox"/>
40403	Kampong Hau	Rice seed production training	1	training	400	World Vision International - Cambodia		✓
40403	Kampong Hau	Pig raising training	1	training	500	World Vision International - Cambodia		✓
40403	Kampong Hau	Animal vaccination request	3	time	400	Department of Agriculture Forestry and Fisheries		✓
Social								
40403	Kampong Hau	Water storage basin construction	1	time	1000	World Vision International - Cambodia		<input type="checkbox"/>
40403	Kampong Hau	Traditional dance trained group strengthening	1	training	3200	Department of Culture and Fine Arts		<input type="checkbox"/>
40403	Kampong Hau	KMeragppl;meFüa)aycMeraHTwks¥at	150	Container	15000	World Vision International - Cambodia		✓
40403	Kampong Hau	Poor pupils enrollment support	1	time	4000	World Vision International - Cambodia		✓
Administration and Security								
40403	Kampong Hau	Land law dissemination	1	training	400	Department of Land Management, Urban Planning & Construction		✓
Gender								
40403	Kampong	Law against domestic violence	1	training	500	World Vision International -		✓

Commune GIS	Commune	Temporary Agreements				Supporter	Funding Source	Listed in CIP before DIW
		Project Name	Quantity	Unit	Est.Cost (K.Riels)			
	Hau	dissemination				Cambodia		
40403	Kampong Hau	Children's rights advocacy	1	time	300	World Vision International - Cambodia		✓
40403	Kampong Hau	Children's international day celebration	1	time	500	World Vision International - Cambodia		✓
40403	Kampong Hau	Women & Children FP strengthening	1	training	400	Department of Women		✓

8.2.4 Temporary Agreements for 2009 as per DIW 2008 for Commune: Phlov Tuk

Commune GIS	Commune	Temporary Agreements				Supporter	Funding Source	Listed in CIP befor DIW
		Project Name	Quantity	Unit	Est.Cost (K.Riels)			
Economic								
40404	Phlov Tuk	Small scale canal rehabilitation	4000	m	18600	World Food Programme		<input type="checkbox"/>
40404	Phlov Tuk	Animal raising training	2	training	1500	Action on Disability and Development		✓
40404	Phlov Tuk	Subsidiary cropping technique training	2	training	1500	Action on Disability and Development		✓
40404	Phlov Tuk	Sow for raising request	120	Head	20000	Action on Disability and Development		✓
40404	Phlov Tuk	Vegetable seeds request	50	Kg	10000	Action on Disability and Development		✓
40404	Phlov Tuk	Irrigation canal rehabilitation	2000	m	20000	Action on Disability and Development		✓
Social								
40404	Phlov Tuk	Khmer culture awareness education	1	time	600	Department of Culture and Fine Arts		✓
Administration and Security								
40404	Phlov Tuk	Village and commune leaders focal person strengthening	1	training	400	Department of Women		<input type="checkbox"/>

8.2.5 Temporary Agreements for 2009 as per DIW 2008 for Commune: Pou

Commune GIS	Commune	Temporary Agreements				Supporter	Funding Source	Listed in CIP before DIW
		Project Name	Quantity	Unit	Est.Cost (K.Riels)			
Economic								
40405	Pou	Woman cash saving group	4	time	240	Department of Environment		<input type="checkbox"/>
40405	Pou	Chicken raising training	3	training	300	Department of Agriculture Forestry and Fisheries		<input type="checkbox"/>
40405	Pou	Animal vaccination request	6	time	500	Department of Agriculture Forestry and Fisheries		✓
40405	Pou	Earth road repair	7900	m	94000	Department of Rural Development		✓
40405	Pou	Animal raising training	2	training	0	World Vision International - Cambodia		✓
Social								
40405	Pou	Women and children health care education	2	training	400	World Vision International - Cambodia		✓
40405	Pou	Transmitting disease prevention education	1	training	200	World Vision International - Cambodia		✓
NREM								
40405	Pou	Fishery law education	4	training	240	Department of Environment		✓
40405	Pou	Control flooded forest cutting and illegal fishing	4	time	240	Department of Environment		<input type="checkbox"/>
40405	Pou	Environmental awareness and law education	12	training	240	Department of Environment		✓
Administration and Security								
40405	Pou	Land law dissemination	1	time	400	Department of Land Management, Urban Planning & Construction		✓
40405	Pou	Swindle cheating on woman and children awareness raising among pupils	1	time	1000	Department of Social and Veteran Affairs and Youth Rehabilitation		<input type="checkbox"/>
40405	Pou	Commune and village female leaders strengthening	1	training	200	Department of Women		<input type="checkbox"/>
Gender								
40405	Pou	Women & Children FP strengthening	1	training	1000	Department of Social and		✓

Commune GIS	Commune	Temporary Agreements				Supporter	Funding Source	Listed in CIP before DIW
		Project Name	Quantity	Unit	Est.Cost (K.Riels)			
						Veteran Affairs and Youth Rehabilitation		
40405	Pou	Children's international day celebration	1	time	1000	World Vision International - Cambodia		✓
40405	Pou	Gender and child rights dissemination	2	training	200	World Vision International - Cambodia		✓

8.2.6 Temporary Agreements for 2009 as per DIW 2008 for Commune: Pralay Meas

Commune GIS	Commune	Temporary Agreements				Supporter	Funding Source	Listed in CIP befor DIW
		Project Name	Quantity	Unit	Est.Cost (K.Riels)			
Social								
40406	Pralay Meas	Khmer traditional art performance training	1	training	1300	Department of Culture and Fine Arts		<input type="checkbox"/>
40406	Pralay Meas	Khmer culture awareness education	1	time	600	Department of Culture and Fine Arts		✓
Administration and Security								
40406	Pralay Meas	Commune and village female leaders strengthening	1	training	200	Department of Women		<input type="checkbox"/>

8.2.7 Temporary Agreements for 2009 as per DIW 2008 for Commune: Samraong Saen

Commune GIS	Commune	Temporary Agreements				Supporter	Funding Source	Listed in CIP before DIW
		Project Name	Quantity	Unit	Est.Cost (K.Riels)			
NREM								
40407	Samraong Saen	Education on the effect of polluted water	1	time	400	Action on Disability and Development		✓
40407	Samraong Saen	Tree planting promotion/dissemination	1	place	200	Action on Disability and Development		✓
40407	Samraong Saen	Flooded forest clearance prevention	1	time	200	Action on Disability and Development		✓
40407	Samraong	Fishery law education	1	time	400	Action on Disability and		✓

Commune GIS	Commune	Temporary Agreements				Supporter	Funding Source	Listed in CIP before DIW
		Project Name	Quantity	Unit	Est.Cost (K.Riels)			
	Saen					Development		
Administration and Security								
40407	Samraong Saen	Commune and village female leaders strengthening	1	training	200	Department of Women		<input type="checkbox"/>

8.2.8 Temporary Agreements for 2009 as per DIW 2008 for Commune: Svay Rumpear

Commune GIS	Commune	Temporary Agreements				Supporter	Funding Source	Listed in CIP before DIW
		Project Name	Quantity	Unit	Est.Cost (K.Riels)			
Economic								
40408	Svay Rumpear	Animal vaccination request	2	time	400	World Vision International - Cambodia		✓
40408	Svay Rumpear	Sre Veal Kdol's canal repairing	1	place	400	Action on Disability and Development		☐
Social								
40408	Svay Rumpear	Water filter	130	Container	1000	World Vision International - Cambodia		☐
40408	Svay Rumpear	Junior high school construction	1	building	8000	Ministry of Education Youth and Sports		✓
40408	Svay Rumpear	Child education	1	training	200	World Vision International - Cambodia		☐
40408	Svay Rumpear	Livestock vaccinating	5	time	400	Department of Agriculture Forestry and Fisheries		☐
40408	Svay Rumpear	Swindle cheating on woman and children awareness raising among pupils	1	training	1000	Department of Social and Veteran Affairs and Youth Rehabilitation		☐
NREM								
40408	Svay Rumpear	Organizing tree planting day	1	time	200	World Vision International - Cambodia		✓
Administration and Security								
40408	Svay Rumpear	Commune and village female leaders strengthening	1	training	200	Department of Women		☐
Gender								

Commune GIS	Commune	Temporary Agreements				Supporter	Funding Source	Listed in CIP before DIW
		Project Name	Quantity	Unit	Est.Cost (K.Riels)			
40408	Svay Rumpear	Anti-domestic violence law dissemination	1	training	200	Action on Disability and Development		<input type="checkbox"/>
40408	Svay Rumpear	Domestic violence prevention training	1	training	200	Action on Disability and Development		<input type="checkbox"/>
40408	Svay Rumpear	Children network protection training	2	training	400	Department of Women		<input type="checkbox"/>
40408	Svay Rumpear	Women & Children FP strengthening	1	time	200	Action on Disability and Development		✓
40408	Svay Rumpear	Scholarship provision to female pupil	2	training	500	Action on Disability and Development		✓
40408	Svay Rumpear	Women role in development strengthening/dissemination	1	training	200	Action on Disability and Development		✓
40408	Svay Rumpear	Rescue children & women from violence	1	training	200	Action on Disability and Development		✓

8.2.9 Temporary Agreements for 2009 as per DIW 2008 for Commune: Trangel

Commune GIS	Commune	Temporary Agreements				Supporter	Funding Source	Listed in CIP befor DIW
		Project Name	Quantity	Unit	Est.Cost (K.Riels)			
Economic								
40409	Trangel	Pig raising training	2	training	200	World Vision International - Cambodia		✓
40409	Trangel	Rice cultivation technique training	2	training	200	World Vision International - Cambodia		✓
40409	Trangel	Laterite road repairing	660	m	6000	World Vision International - Cambodia		□
40409	Trangel	Chicken raising training	4	training	200	Department of Agriculture Forestry and Fisheries		□
40409	Trangel	Dam repairing	230	m	1880	Department of Rural Development		□
40409	Trangel	Earth road repair	7000	m	8400	Department of Rural Development		✓
Social								

District Data Book 2009: District Profile

Commune GIS	Commune	Temporary Agreements				Supporter	Funding Source	Listed in CIP before DIW
		Project Name	Quantity	Unit	Est.Cost (K.Riels)			
40409	Trangel	Scholarship provision to poor pupils	1	Course/year	4000	World Vision International - Cambodia		✓
40409	Trangel	Poor pupils enrollment support	50	person	1000	World Vision International - Cambodia		✓
40409	Trangel	Health/hygiene education for local people	7	training	300	World Vision International - Cambodia		✓
40409	Trangel	Women and children health care education	2	training	400	World Vision International - Cambodia		✓
40409	Trangel	Food safety and hygiene education	1	training	200	World Vision International - Cambodia		✓
40409	Trangel	Dengue fever education programme	1	training	300	World Vision International - Cambodia		✓
40409	Trangel	KMeragppl;meFüa)aycMeraHTwks¥at	200	Container	1000	World Vision International - Cambodia		✓
40409	Trangel	Water storage basin construction	7	Reservoir	4000	World Vision International - Cambodia		□
NREM								
40409	Trangel	Environmental awareness and law education	2	training	400	World Vision International - Cambodia		✓
Administration and Security								
40409	Trangel	Commune and village female leaders strengthening	1	training	400	Department of Women		□
Gender								
40409	Trangel	Women/children rights alleviation support	3	training	400	World Vision International - Cambodia		✓
40409	Trangel	Children's rights advocacy	1	time	300	World Vision International - Cambodia		✓
40409	Trangel	Law against domestic violence dissemination	7	training	400	World Vision International - Cambodia		✓
40409	Trangel	Swindle cheating on woman and children awareness raising among pupils	1	time	1000	Department of Social and Veteran Affairs and Youth Rehabilitation		□

Source: CDPD, District Level Detail TA resulting from DIW

8.3 Outputs, estimated and actual costs of C/S Fund Projects between 2005 and 2008, by Commune

Commune	Project Type	Budget Year	Output		Quantity	Unit	Unit Cost MR	
			Description	Type			Estimate	Actual
Chranouk	Irrigation	2005	Earth dam	Repair	1.365	Km	26.52	25.20
Chranouk	Rural Transport	2007	Single pipe culvert	New	2	Place	3.36	59.28
Chranouk	Rural Transport	2007	Laterite road	Upgrade	4.248	Km	55.93	59.28
Dar	Irrigation	2005	Canal	Repair	0.317	Km	10.32	23.81
Dar	Irrigation	2005	Earth dam	Repair	3.60E-02	Km	6.39	23.81
Dar	Irrigation	2005	Single pipe Culvert with gate	New	1	Place	8.35	23.81
Dar	Irrigation	2006	Earth dam	Repair	0.828	Km	23.48	29.91
Dar	Irrigation	2006	Single pipe Culvert with gate	New	2	Place	6.43	29.91
Dar	Rural Transport	2007	Single pipe culvert	New	1	Place	3.22	25.60
Dar	Rural Transport	2007	Laterite road	Upgrade	2.72	Km	25.45	25.60
Dar	Rural Transport	2008	Earth road	Repair	8.064	Km	97.28	32.67
Kampong Hau	Irrigation	2005	Earth dam	Repair	0.55	Km	5.91	25.52
Kampong Hau	Irrigation	2005	Single pipe Culvert with gate	New	6	Place	21.11	25.52
Kampong Hau	Irrigation	2006	Earth dam	Repair	3.73	Km	30.62	30.59
Kampong Hau	Irrigation	2007	Canal	Repair	0.8	Km	29.73	24.00
Kampong Hau	Rural Transport	2008	Earth road	Repair	3.176	Km	52.16	34.83
Kampong Hau	Rural Transport	2008	Single pipe culvert	New	6	Place	19.96	34.83
Phlov Tuk	Irrigation	2005	Canal	Repair	0.228	Km	21.06	20.22
Phlov Tuk	Irrigation	2006	Canal	Repair	0.29	Km	23.71	23.56
Phlov Tuk	Irrigation	2007	Canal	Upgrade	0.236	Km	23.74	23.73
Phlov Tuk	Education	2008	Wooden school (general)	New	2	School room	23.80	23.80
Pou	Irrigation	2005	Earth dam	Repair	0.447	Km	13.60	21.15
Pou	Irrigation	2005	Single pipe Culvert with gate	New	2	Place	8.83	21.15
Pou	Rural Transport	2007	Single pipe culvert	New	4	Place	8.10	22.22
Pou	Irrigation	2007	Earth dam	Repair	0.56	Km	20.13	24.60
Pou	Irrigation	2007	Single pipe Culvert with gate	New	3	Place	7.60	24.60
Pou	Rural Transport	2007	Earth road	Upgrade	0.715	Km	17.12	22.22
Pou	Rural Transport	2008	Earth road	Repair	3.228	Km	39.22	32.94
Pou	Rural Transport	2008	Single pipe culvert	New	8	Place	22.30	32.94
Pralay Meas	Irrigation	2005	Canal	Repair	0.9	Km	23.30	22.37
Pralay Meas	Rural Transport	2007	Earth road	Upgrade	2.875	Km	51.12	51.13
Pralay Meas	Domestic Sanitation	2008	Latrines (general)	New	15	Latrine room	75.80	25.27
Samraong Saen	Irrigation	2005	Earth dam	Repair	1.50E-02	Km	1.78	19.18

Commune	Project Type	Budget Year	Output		Quantity	Unit	Unit Cost MR	
			Description	Type			Estimate	Actual
Samraong Saen	Irrigation	2005	Single pipe Culvert with gate	New	6	Place	18.41	19.18
Samraong Saen	Irrigation	2007	Earth dam	Upgrade	1.4	Km	28.33	26.50
Samraong Saen	Irrigation	2007	Single pipe Culvert with gate	New	2	Place	11.36	26.50
Svay Rumpear	Irrigation	2005	Earth dam	Repair	0.95	Km	10.22	24.51
Svay Rumpear	Irrigation	2005	Single pipe Culvert with gate	New	2	Place	14.96	24.51
Svay Rumpear	Irrigation	2006	Earth dam	Repair	1.48	Km	27.10	26.94
Svay Rumpear	Irrigation	2007	Earth dam	Upgrade	1.7	Km	27.67	19.55
Svay Rumpear	Irrigation	2008	Earth dam	Repair	3.5	Km	71.08	35.54
Trangel	Irrigation	2005	Earth dam	Repair	0.9	Km	21.04	23.30
Trangel	Irrigation	2005	Single cell box culvert with gate	Repair	1	Place	3.52	23.30
Trangel	Irrigation	2006	Single pipe Culvert with gate	New	2	Place	7.27	27.52
Trangel	Irrigation	2006	Earth dam	Repair	2.411	Km	20.77	27.52
Trangel	Irrigation	2007	Earth dam	Repair	1.77	Km	16.30	24.20
Trangel	Irrigation	2007	Single pipe Culvert with gate	New	4	Place	11.05	24.20
Trangel	Rural Transport	2008	Earth road	Repair	1.016	Km	22.33	30.33
Trangel	Rural Transport	2008	Single pipe culvert	New	4	Place	7.97	30.33

Source: PID

8.4 Total Expenditure on C/S Fund Projects by sector and commune between 2005 and 2008

Sector	Total Cost in Million Riels								
	Chranouk	Dar	Kampong Hau	Phlov Tuk	Pou	Pralay Meas	Samraong Saen	Svay Rumpear	Trangel
Domestic Sanitation						25.27			
Education				23.80					
Irrigation	25.20	53.72	80.10	67.51	45.76	22.37	45.68	106.53	75.02
Rural Transport	59.28	58.27	34.83		55.17	51.13			30.33

Source: PID

8.5 Actual 2009 C/S Fund projects by Commune

Commune	Project Type	Project Output		Quantity	Unit	Fund Source (Riels)		
		Description	Type			Total	C/S	Local Contribution
Chranouk	Rural Transport	Sand Road	Repair	1.305	km	40,950,700	39,950,700	1,000,000
Chranouk	Rural Transport	Single pipe culvert 0.6m diameter	New	2	Place	40,950,700	39,950,700	1,000,000
Dar	Irrigation	Earth dam	New	0.78	km	38,103,500	37,903,500	200,000
Dar	Irrigation	River bank protection	New	1	Place	38,103,500	37,903,500	200,000
Kampong Hau	Irrigation	Unlined Earth canal	Repair	1.427	km	42,726,150	41,926,150	800,000
Phlov Tuk	Irrigation	Unlined Earth canal	Repair	0.42	km	33,144,999	32,744,999	400,000
Samraong Saen	Rural Transport	Laterite road	Upgrade	2.5	km	70,309,250	70,109,250	200,000
Trangel	Irrigation	Earth dam	Repair	0.2	km	38,488,500	37,488,500	1,000,000
Trangel	Irrigation	Double cell box culvert 3.0m x 2.0m with stop logs	New	1	Place	38,488,500	37,488,500	1,000,000

Source: PID

9 District level Projects from 2006 to 2009

District Initiative Projects (DIPs) are funded by Danida, DFID and PSDD (UNDP, DFID and SIDA).

Funding for 2006-2008

Between 2006 and 2008 there were 14 provinces funded by PSDD and 10 by Danida and DFID. The list of provinces and who funded these is below

Danida and DFID funded DIPs:

Kampong Cham	Kampong Speu	Koh Kong	Kratie	Monduliri
Pursat	Ratanakiri	Siem Reap	Sihanoukville	Kep

PSDD funded DIPs:

Banteay Meanchey	Battambang	Kampong Chhnang	Kandal	Phnom Penh
Prey Veng	Svay Rieng	Takeo	Kampong Thom	Preah Vihear
Stung Treng	Kampot	Oddar Meanchey	Pailin	

Funding for 2009

In 2009 there was a change to the number of provinces funded by the two streams. Danida and DFID were still funding the same 10 provinces they had been funding the previous three years, but two more provinces were added *Kampong Thom and Kampot*. Now PSDD funds 12 provinces and Danida and DFID fund 12.

9.1 District Initiative Infrastructure Projects from 2006 to 2009

9.1.1 District Initiative Infrastructure Projects for 2006 to 2008

Date	Project Name	Implementing Agencies	Budget (US\$)	Project Output & Capacity	Number of Beneficiaries
2007	Repair Samroang Sen road 4,316 m	Inter-commune	6,939.00		
2008	Rehabilitation of earth road	Inter-commune	8,134.00	3000m	

9.1.2 District Initiative Infrastructure Projects in 2009

No District Initiative Infrastructure Projects have been implemented in this district for 2009

9.2 District Initiative Service Projects from 2006 to 2009

9.2.1 District Initiative Service Projects for 2006 to 2008

Date	Project Names	Implementing agencies	Budget (US\$)	Project Output & Capacity	Number of Beneficiaries
2007	Training on prevention from domestic violence and protection of victims	District WA	318.62		
2007	Dissemination land law	District Land	195.08		
2007	Education on importance on family latrine	PDRD	199.90		
2007	Training on safety on agricultural pesticides	District Agri	128.72		
2007	Education on laws for people	District Police	123.44		
2007	Strengthening law enforcement	District Police	165.62		
2007	Training on vegetable cultivation	District Agri	127.20		
2007	Strengthening protection of flooded forest and forests	District Agri	127.20		
2007	Dissemination on wildlife protection law	DENV	120.00		
2007	Dissemination on land law	District Land	160.00		
2007	Education on traditions and customs	District Culture	160.00		
2007	Training on rice cultivation through natural way	District Agri	320.01		
2007	Conduct education for target big and small brother groups	District Police	165.62		
2007	Educate parents importance of study for their children	District Education	360.00		
2007	Training on reed (Kak) cultivation	District Agri	160.00		
2007	Education on morality and Khmer value	DWA	160.00		
2008	Traffic law announcement	DP&TO	363.00		
2008	Land law announcement	DLTO	272.50		
2008	Legal code announcement	District police	265.00		
2008	Civil register education	District department	281.74		
2008	Rice production techniques	DAO	151.38		
2008	Benefits of animal vaccination	DAO	180.76		
2008	Strengthen commune and village women leaders	DWAO	157.64		
2008	Domestic violence prevention	DWAO	491.28		
2008	Compost making techniques	DAO	189.26		
2008	Monitoring skills for CCs	DPO	239.56		

9.2.2 District Initiative Service Projects in 2009

Project Name	Sector	Implementing Agency	Budget	Project outputs/ capacities	No. of Beneficiaries		Progress	Remarks on Issues of Progress
					Total	Female		
Training on crop integrated farming system	AGR	Agriculture Office	\$239.00	1 course	45	35	100%	Implemented on June 23-09
Training on compost making and its benefits	AGR	Agriculture Office	\$231.50	1 course	45	30	100%	Implemented on June 22-09
Training on vegetable production	AGR	Agriculture Office	\$658.00	2 courses	90	60	0%	
Training on map use and analysis	LUM	LMUCC Office	\$478.40	2 courses	94	14	100%	Implemented on May 21-09
Training on statistics management	PLA	Planning Office	\$502.10	2 courses	76	10	0%	
Training on factory worker right	SOC	Social Affairs Office	\$875.50	2 courses	90	75	0%	
Announcement of environment law and environment poison impact	NRM	Environment Office	\$488.40	2 courses	94	40	50%	Conducted June 16, 2009
Environment anniversary meeting	NRM	Environment Office	\$1,965.00	1 time	660	360	0%	
Primary health care education	HEA	Health Center/OD	\$972.10	3 courses	141	120	100%	Implemented from June 10 to 12, 2009
Education on Khmer traditional culture	CUL	Culture Office	\$741.85	3 courses	80	60	0%	

9.3 Inter Commune Council Projects in 2008 and 2009

9.3.1 ICC Projects in 2008

Districts	Project Location	Beneficiary Commune/ Sangkat	Outputs	Project Size	Unit	Contract Cost	Fund Sources	
							ICC Fund	Community
Tuek Phos	Chaong Maong, Akphi Wat	Chaong Maong, Akphi Wat	Bridge construction	1	Unit	\$24,156.00	\$24,055.00	\$101.00
			Laterite road upgrade	119	Metre			
Total for Tuek Phos						\$24,156.00	\$24,055.00	\$101.00
Baribour	AngchagnRong,Popel	AngchagnRong,Popel,PechchangVa,KhonRong	Road culvert construction	5	Unit	\$35,810.00	\$35,780.00	\$30.00
			Laterite road upgrade	3,682	Metre			
Total for Baribour						\$35,810.00	\$35,780.00	\$30.00
Samaki Meanchey	Sethey, Thlokwien	Sethey,Thlok Vien, Tbeng Khpuos, Svay, Kreang Lovea, Khnar Chhmar	Road culvert construction	6	Unit	\$31,068.00	\$30,978.00	\$90.00
			Laterite road upgrade	5,194	Metre			
Total Samkimeanchhey						\$31,068.00	\$30,978.00	\$90.00
Rolea B'ier	Prasneb, Banteay Preal	Prasneb, Banteay Preal, Pongro, Krang Leav	Road culvert construction	4	Unit	\$30,130.00	\$30,000.00	\$130.00
			Laterite road upgrade	2,068	Metre			
Total for Rolea B'ier						\$30,130.00	\$30,000.00	\$130.00
Kampong Tralach	Kampong Tralach, Lonwek	Kampong Tralach, Lonwek, Ampil Tik, Chresh	Twin road culvert	3	Unit	\$32,786.00	\$32,586.00	\$200.00
			Laterite road upgrade	4,045	Metre			
Total for Kampong Tralach						\$32,786.00	\$32,586.00	\$200.00
Total for Kampong Chhnang Province						\$153,950.00	\$153,399.00	\$551.00

9.3.2 ICC Projects in 2009

Districts	Project Location	Beneficiary Commune/ Sangkat	Outputs	Project Size	Unit	Contract Cost	Fund Sources	
							ICC Fund	Community
Samaki Meanchey	Sethey, Thlork Vean	Sethey, Thlork Vean, Khnar Chmar, Kraing Lvea, Tbeng Khpos	New Bridge	13	Meter	\$26,337.00	\$26,287.00	\$50.00
			Culvert	1	Place			
			Laterite road upgrade	570	Meter			
Total for Samaki Meanchey						\$26,337.00	\$26,287.00	\$50.00
Kampong Tralach	Chhouk Sar, Thmor Ith	Chhouk Sar, Thmar Ith, Ta Ches, Peany, Ou Russey	Laterite road upgrade	2,700	Meter	\$24,689.36	\$24,624.36	\$65.00
			Culverts	10	Place			
			New Bridge	1	Place			
	Seb, Chhouk Sar	Seb, Chhouk Sar, Toek Hout, Chouen Kriev	Laterite road upgrade	8,977	Meter	\$32,147.81	\$31,947.81	\$200.00
			Culverts	8	Place			
Total Kampong Tralach						\$56,837.17	\$56,572.17	\$265.00
Boribor	Pich Changvar, Trapeang Chan	Pich Changvar, Trapeang Chan, Punley, Popel, Chhnok tru	Laterite road upgrade	3,450	Meter	\$26,995.00	\$26,945.00	\$50.00
			Culverts	1	Place			
Total for Boribor						\$26,995.00	\$26,945.00	\$50.00
Touek Phos	Cheab	Cheab, Khlong Popok, Akphivath, Tang Krasaing	New Spillway	37	Meter	\$50,580.00	\$30,341.00	\$20,239.00
			Earth Dike Upgrade	1,400	Meter			
			Canal Rehabilitation	1,695	Meter			
			Concrete Dike	2	Place			
Total for Kampong Tralach						\$50,580.00	\$30,341.00	\$20,239.00
Total for Kampong Chhnang						\$160,749.17	\$140,145.17	\$20,604.00

Source: ICC project, Ministry of Interior (DoLA), -UNDP project for Local Governance – DDLG

9.4 Other Projects in 2008 and 2009

9.4.1 RPRP

There are no RPRP projects being implemented in this district or province at this time. The RPRP is only being implemented in Svay Rieng and Prey Veng

9.4.1.1 RPRP Projects from 2006 to 2008

No RPRP projects in this district at this time

9.4.1.2 RPRP Projects in 2009

No RPRP projects in this district at this time

9.4.2 Seth Korma

9.4.2.1 Seth Koma 2007

There are no Seth Korma projects being implemented in this district or province at this time.

Source: UNICEF

9.4.2.2 Seth Koma 2008

There are no Seth Korma projects being implemented in this district or province at this time.

Source: UNICEF

9.4.2.3 Seth Koma 2009

There are no Seth Korma projects being implemented in this district or province at this time.

Source: UNICEF

SECTION D: SERVICES AND ORGANIZATIONS

10 Infrastructure

10.1 Length of and Expenditure on Roads in 2008, by District

Roads	KCH	Kampong Chhnang	Boribor	Roleap Ear	Teuk Phos	Kapong Leng	Choul Kiri	Kampong Tralach	Samaky Meanchey
Length of paved road in the district	148	28	30	38	10	0	0	33	9
Length of unpaved roads in the district	235	51	6	56	41	32	0	39	11
Amount spent on construction of roads in 2008 (\$)	664,381	252,250	0	299,684	112,447	0	0	0	0
Amount spent on repair and rehabilitation of roads in 2008 (\$)	433,793	52,986	86,086	77,872	104,578	0	0	86,055	26,217

Note 1: Please note that these data are not necessarily complete or correct. The data are derived from government agencies at provincial and district level which used different recording systems, did not always have complete data or were, sometimes, less than willing to share their data.

Note 2: Please be aware that these data are incomplete due to the fact that the amounts for the construction, repair and rehabilitation recorded reflect only funds provided by the government, not the contributions by any other parties.

10.2 Scale of and Expenditure on Irrigation in 2008, by District

Irrigation	KCH	Kampong Chhnang	Boribor	Roleap Ear	Teuk Phos	Kapong Leng	Choul Kiri	Kampong Tralach	Samaky Meanchey
Number of irrigation schemes operating in 2008	3	0	0	1	0	0	1	1	0
Total nr of hectares under irrigation in dry season 2008	674	0	0	159	0	0	197	318	0
Total funds spent in 2008 on construction of irrigation systems (\$)	n/a	0	0	n/a	0	0	n/a	n/a	n/a
Total funds spent in 2008 on rehabilitation/repair of irrigation systems (\$)	n/a	0	0	n/a	0	0	n/a	n/a	n/a
Total funds spent in 2008 on operation and maintenance (\$)	n/a	0	0	n/a	0	0	n/a	n/a	n/a

Note 1: Please note that these data are not necessarily complete or correct. The data are derived from government agencies at provincial and district level which used different recording systems, did not always have complete data or were, sometimes, less than willing to share their data.

Note 2: Please be aware that the data above are incomplete as these only reflect funds provided by the government, not the contributions by farmers or other parties.

10.3 Power Supply in 2008, by District

Electricity	KCH	Kampong Chhnang	Boribor	Roleap Ear	Teuk Phos	Kapong Leng	Choul Kiri	Kampong Tralach	Samaky Meanchey
Total number of electricity connections to households	5,790	3,236	330	802	509	0	0	913	0
Total number of electricity connections to agencies, companies, organizations	n/a	n/a	n/a	n/a	n/a	0	0	n/a	0
Total volume in KWh of electricity consumed last in 2008	3,204,489	2,869,179	43,300	104,884	60,526	0	0	126,600	0
Total amount collected from users for consumed electricity (\$)	1,173,336	929,614	30,626	89,535	49,454	0	0	74,107	0
Per capita electricity consumption in 2008 in Kwh	32	887	131	131	119	0	0	139	0

Note 1: Please note that these data are not necessarily complete or correct. The data are derived from government agencies at provincial and district level which used different recording systems, did not always have complete data or were, sometimes, less than willing to share their data.

Note 2: These data only record electricity provided by electricity companies and does not include homes powered by generators or batteries (for this information see Section B: General Profile, Part 1: General Information; table 1.3.1 and chart 1.3.4).

Note 3: In most provinces electricity is only provided through town-based networks

Note 4: Per capita consumption is calculated by dividing the total volume of electricity produced in 2008 by the number of people living in each district as per the 2008 census (for the provincial data it is calculated against the number of people living in the province)

11 Health Facilities

Please note that the Operational District (health) boundaries are different to the administrative district boundaries. Therefore the data provided here shows the facilities, staff, NGOs etc in each Operational District within the province NOT the administrative district.

Acronyms

Com Cov	Commune Covered	MW2	Secondary Midwives
CPA	Complementary Package of Activities	NU1	Primary Nurse
Dr	Doctor	NU2	Secondary Nurse
FDH	Former District Hospital	OD	Operational District
HC	Health Center	Others	Other Staff
HC (NB)	Health Center no building	PHD	Provincial Health Department
HP	Health Post	Pop 04-05	Population Covered 2004 or 2005
MA	Medical Assistant	RH	Referral Hospital
MPA	Minimum Package of Activities	Vil Cov	Village Covered
MW1	Primary Midwives	VIL-HC	Distance from Village to Health Center

11.1 Health Facilities in the Province, by Operational District

Kompong Chhang	OD	RH	HC	HP
Kampong Chhnang.	1	1	23	3
Kampong Tralach	1	1	11	
Total	2	2	34	3
Total	10	10	135	0

11.2 Health Facilities and Staff in the province, by Operational District

This table shows health facilities, staff and coverage of health facilities in each operational district.

No	Facility Name	Type	Class	Dr	Ma	Nu2	Nu1	Mw2	Mw1	Others	Com Cov	Vil Cov	Pop. 04-05
Kampong Chhnang.													
1	Akphivoadth	FDH	CPA+MPA	1	0	2	6	2	2	1	4	24	19,801
2	Cheung Kreav	HC	MPA	0	0	1	2	1	2	3	2	15	8,769
3	Chhnok Tru	HC	MPA	0	0	4	2	1	0	2	2	8	7,623
4	Chieb	HC	MPA	0	0	1	5	0	0	4	3	28	13,545
5	Chranouk	HC	MPA	0	0	0	5	0	2	0	2	6	8,358
6	Chrey Bak	FDH	MPA	0	0	1	6	1	2	1	2	19	11,620
7	Kampong Chhnang	HC	MPA	1	1	2	2	1	0	2	3	17	17,638
8	Kampong Hau	FDH	CPA+MPA	0	0	1	10	3	1	4	3	17	13,788
9	Krang Skear	HC	MPA	0	0	1	3	0	0	6	2	9	11,781

District Data Book 2009: Services and Organizations

No	Facility Name	Type	Class	Dr	Ma	Nu2	Nu1	Mw2	Mw1	Others	Com Cov	Vil Cov	Pop. 04-05
10	Krasang Doh Laeung	HP	Nil	0	0	0	1	0	0	0	1	1	-
11	Peam Chhkaok	HC	MPA	0	0	0	3	0	2	2	3	11	10,815
12	Pech Changvar	HP	Nil	0	0	0	1	0	0	0	1	1	-
13	Phsar	HC	MPA	0	0	1	2	2	1	5	4	20	14,717
14	Phsar Chhnang	HC	MPA	1	0	1	3	1	3	0	2	9	17,717
15	Pongro	HC	MPA	0	0	2	5	1	3	3	4	34	18,267
16	Ponley	FDH	CPA+MPA	1	2	0	10	2	3	4	3	24	17,825
17	Pralay Meas	HC	MPA	0	0	1	3	1	3	1	3	13	8,878
18	Preah Kosamak	HC	MPA	0	1	0	1	0	2	4	2	10	7,730
19	Prey Khmer	HC	MPA	0	0	0	4	2	4	1	3	21	18,358
20	Prey Kri	FDH	CPA+MPA	0	1	2	5	2	2	1	2	8	13,700
21	Srae Thmei	HC	MPA	0	0	3	3	0	2	1	1	12	9,729
22	Svay Chrum	HC	MPA	0	0	2	3	0	0	3	1	22	12,778
23	Svay Rumppear	HC	MPA	0	0	1	4	1	1	0	3	10	11,032
24	Tang Krasang	HC	MPA	0	0	1	1	1	0	4	2	12	8,461
Total:				4	5	27	90	22	35	52	58	351	282,930
Kampong Tralach													
1	Trapeang Chan	HC	MPA	0	0	1	0	1	1	8	3	16	10,880
2	Ampil Tuek	HC	MPA	0	0	0	2	0	3	4	1	11	28,532
3	Kampong Tralach Leu	HC	MPA	0	0	1	4	0	3	6	2	19	35,046
4	Koh Thkov	HC	MPA	1	0	1	2	0	1	4	1	10	17,562
5	Krang Lvea	HC	MPA	0	0	1	3	0	2	2	3	13	18,571
6	Longveaek	HC	MPA	1	0	0	4	0	2	4	5	18	23,935
7	Saeb	HC	MPA	0	1	1	3	1	0	3	3	18	42,024
8	Sala Lek Pram	HC	MPA	1	1	1	2	0	2	4	5	20	23,896
9	Svay	HC	MPA	1	0	1	1	0	4	1	3	25	148,349
10	Svay Chuk	HC	MPA	0	0	0	4	0	3	6	3	30	32,064
11	Ta Ches	HC	MPA	0	1	0	3	0	2	3	2	20	133,224
Total:				4	3	7	28	2	23	45	31	200	514,083
Total All				8	8	34	118	24	58	97	89	551	797,013

Source: MEDiCAM – Infrastructure - (http://www.medicam-cambodia.org/hsi/health_system/srch/index.asp?cboLcn=6&cmdSearch=Search&cboCHName=&cboType=)

11.3 Deliveries in 2007 in the Province, by Operational District

OD	Deliveries	Deliveries at home		Deliveries	Total deliveries	Total deliveries
	at HC	By Health Staff	ByTBAs	at RH	by Health Staff	by health staff and TBAs
Kampong Chhnang	1630	723	2367	667	3020	5387
Kampong Tralach	1283	157	1597	398	1838	3435
Boribo	1241	119	1103	0	1360	2463
<i>Sub-total</i>	<i>4154</i>	<i>999</i>	<i>5067</i>	<i>1065</i>	<i>6218</i>	<i>11285</i>

Source: MoH, Annual Statistics 2007

12 Education³

12.1 Schools, Classes, Students, Staff, for all levels, for 2007/2008 by District

District	Number of Schools	Disadv. Schools	Number of Classes	Classes in Pagoda	Enrollment		Repeaters		Teaching Staff		Non-Teaching Staff		Total Staff	
					Total	Girl	Total	Girl	Total	Female	Total	Female	Total	Female
Baribo	43	0	328	0	13,456	6,443	1,341	521	319	104	93	17	412	121
Chulkiri	27	0	202	4	8,553	3,931	1,424	581	130	37	28	5	158	42
Kampong Chhnang	16	0	290	0	12,819	6,051	551	187	434	206	109	48	543	254
Kampong Leng	37	0	262	3	10,897	5,168	1,498	655	193	65	43	13	236	78
Kampong Tralach	59	0	488	2	21,553	10,064	1,855	786	414	131	99	22	513	153
Rolea Pa-ir	93	0	584	0	22,058	10,693	1,709	675	652	309	142	45	794	354
Samaki Meanchey	40	0	371	3	17,684	8,523	1,854	747	295	62	69	7	364	69
Teuk Phos	51	0	366	2	15,036	7,363	829	357	294	80	60	13	354	93
Whole Province	366	0	2,891	14	122,056	58,236	11,061	4,509	2,731	994	643	170	3,374	1,164
- Urban Area	16	0	290	0	12,819	6,051	551	187	434	206	109	48	543	254
- Rural Area	350	0	2,601	14	109,237	52,185	10,510	4,322	2,297	788	534	122	2,831	910

12.2 Characteristics of Schools and School Principals for 2007/2008 by Commune

Commune	Number of Schools				2 - Shift	Floating	Schools	Attached	Schools Without		Characteristics of School Principals (Incharge)			
	Pre-Sch	Primary	College	Lycee	Schools	Schools	in Pagoda	Pre-Sch	Water Sup.	Latrine	Avg. Age	Avg. Service	U.Sec+ Ed.	Female
Chranouk	0	3	1	0	3	0	1	0	2		44.7	21.8	0	0
Dar	0	3	1	0	4	0	0	0	3	2	45.7	22.3	1	1
Kampong Hau	1	4	0	1	5	0	2	0	0	2	41.1	16.8	1	4
Phlov Tuk	0	3	0	0	3	2	0	0	2	2	29.3	9.0	1	0
Pou	1	3	1	0	3	0	0	1	1	2	49.9	23.4	0	0
Pralay Meas	1	3	0	0	3	0	2	1	3	3	38.0	17.0	1	2
Samraong Saen	0	1	0	0	1	0	1	0	0		55.8	24.0	0	0
Svay Rumpear	1	4	1	0	4	0	1	1	1	2	48.4	20.3	2	0
Trangel	0	4	0	0	4	0	0	0	2	1	42.8	18.5	0	0

³ All the data for section 12 comes from the Ministry of Education, Youth and Sport (MoEYS)

12.3 Enrolment by Level of Education, 2006/2007 by Commune

Commune	School	Pre school		Primary School		Lower Secondary School		Upper Secondary School		Enrolment	
		Total	Female	Total	Female	Total	Female	Total	Female	Total	Female
Chranouk	3	0	0	1621	807	0	0	0	0	1621	807
Dar	4	0	0	1480	665	372	158	0	0	1852	823
Kampong Hau	6	60	27	1484	699	729	309	251	79	2524	1114
Phlov Tuk	3	0	0	636	304	0	0	0	0	636	304
Pou	5	61	31	849	432	86	34	0	0	996	497
Pralay Meas	4	36	23	940	491	0	0	0	0	976	514
Samraong Saen	1	0	0	336	162	0	0	0	0	336	162
Svay Rumpear	6	32	17	1148	569	107	51	0	0	1287	637
Trangel	4	0	0	1065	544	0	0	0	0	1065	544

12.4 Enrolment by Level of Education, 2007/2008 by Commune

Commune	School	Pre school		Primary School		Lower Secondary School		Upper Secondary School		Enrolment	
		Total	Female	Total	Female	Total	Female	Total	Female	Total	Female
Chranouk	4	0	0	1615	801	133	50	0		1748	851
Dar	4	0	0	1357	634	394	178	0		1751	812
Kampong Hau	6	61	30	1348	604	704	311	332	118	2445	1063
Phlov Tuk	3	0	0	594	260	0	0	0		594	260
Pou	5	57	33	815	399	90	44	0		962	476
Pralay Meas	4	30	18	884	444	0	0	0		914	462
Samraong Saen	1	0	0	291	142	0	0	0		291	142
Svay Rumpear	6	35	22	1069	533	135	62	0		1239	617
Trangel	4	0	0	953	485	0	0	0		953	485

12.5 Aspects of Enrolment for 2007/2008 by Commune

Commune	% Repeaters (Total)			% Over-age Enrollment (Total)			% Repeaters (Girl)			% Over-age Enrollment (Girl)		
	Primary	L.Sec.	U.Sec.	Primary	L.Sec.	U.Sec.	Primary	L.Sec.	U.Sec.	Primary	L.Sec.	U.Sec.
Chranouk	13.6	26.3	0.0	20.2	0.0	0.0	13.6	20.0	0.0	17.1	0.0	0.0
Dar	17.2	1.3	0.0	22.7	55.1	0.0	14.7	2.2	0.0	24.1	60.1	0.0
Kampong Hau	10.1	2.4	4.5	15.7	36.6	40.4	8.4	1.9	0.8	18.7	34.4	28.8
Phlov Tuk	17.2	0.0	0.0	33.8	0.0	0.0	15.4	0.0	0.0	38.8	0.0	0.0
Pou	13.0	0.0	0.0	22.3	31.1	0.0	12.0	0.0	0.0	25.8	27.3	0.0
Pralay Meas	24.3	0.0	0.0	28.4	0.0	0.0	22.5	0.0	0.0	26.1	0.0	0.0
Samraong Saen	20.3	0.0	0.0	7.9	0.0	0.0	20.4	0.0	0.0	7.7	0.0	0.0
Svay Rumpear	16.7	0.0	0.0	25.5	48.1	0.0	14.8	0.0	0.0	23.8	41.9	0.0
Trangel	18.5	0.0	0.0	13.0	0.0	0.0	17.5	0.0	0.0	12.6	0.0	0.0

12.6 School Buildings for all schools in the District for 2007/2008, by Commune

Commune	Total Number of		Concrete/Brick Structure		Wooden Structure		Bamboo Structure		New Buildings		Buildings Without Good		
	Buildings	Rooms	Buildings	Rooms	Buildings	Rooms	Buildings	Rooms	Repaired	Constructed	Floor	Roof	Wall
Chranouk	7	29	6	27	1	2	0	0	0	0	1	1	1
Dar	7	31	7	31	0	0	0	0	0	2	1	1	1
Kampong Hau	13	61	13	61	0	0	0	0	0	0	4	3	5
Phlov Tuk	4	10	1	3	3	7	0	0	0	0	0	0	1
Pou	5	20	4	18	1	2	0	0	0	0	1	0	0
Pralay Meas	5	18	4	17	1	1	0	0	0	0	0	1	0
Samraong Saen	1	5	1	5	0	0	0	0	0	0	0	0	0
Svay Rumpear	7	24	5	21	2	3	0	0	0	1	2	0	2
Trangel	7	29	7	29	0	0	0	0	0	0	1	0	1

12.7 Conditions of Classrooms and Existence of Separate School Office and Library, by Commune

Commune	Number of Class rooms	Number of Classrooms			Classrooms Without Good			Number of Furniture needed				Schools with Separate	
		in Pagoda	New Repaired	New Constr.	Floor	Roof	Wall	Desks	Chairs	Black-board	Teacher Table	Office	Library
Chranouk	22	0	0	0	4	4	4	0	0	0	0	2	1
Dar	30	0	0	8	3	3	3	0	40	0	1	1	1
Kampong Hau	38	0	0	0	16	11	19	50	25	0	8	5	3
Phlov Tuk	9	0	0	0	0	0	3	0	0	0	2	0	0
Pou	17	3	0	0	5	0	0	10	0	0	2	1	1
Pralay Meas	15	0	0	0	0	1	0	0	50	0	50	1	0
Samraong Saen	5	0	0	0	0	0	0	0	0	0	0	0	0
Svay Rumpear	20	0	0	4	3	0	3	20	0	1	1	4	1
Trangel	18	0	0	0	5	0	5	2	0	0	4	2	1

12.8 Community Participation and Financing across all schools in the District for 2007/2008 by Commune

Commune	Parent Association				Comm. Teachers	Teaching Monks	PAP Fund (Riel)		Number of Schools Obtaining Funds from				
	Exists	Held Meet	Total	Female			per Student	per School	Sch. Income	Community	Gvt. For building	Abroad	IOs/NGOs
Chranouk	4	4	6	1	0	0	8,025	4,336,133	0	1	0	0	0
Dar	3	3	5	1	0	0	10,873	5,034,275	0	0	0	0	0
Kampong Hau	6	6	5	1	0	0	12,529	5,145,333	0	0	0	0	0
Phlov Tuk	3	3	3	0	0	0	9,705	2,630,000	0	0	0	0	0
Pou	4	4	4	0	0	0	10,213	2,167,750	0	0	0	0	0
Pralay Meas	4	4	4	0	0	0	8,289	2,597,333	0	0	0	0	0
Samraong Saen	1	1	2	0	0	0	8,848	2,973,000	0	0	0	0	0
Svay Rumpear	6	6	4	0	0	0	9,939	2,282,000	0	0	1	0	0
Trangel	4	4	5	1	0	0	9,407	2,504,500	0	0	0	0	0

12.9 Percentage Student Flow Rates and Graduation by level 2006/2007, by Commune

Commune	Primary Level (Grades 1-6)			Lower Secondary Level (Grades 7-9)			Upper Secondary Level (Grades 10-12)			Successful Candidates		
	Promotion	Repetition	Dropout	Promotion	Repetition	Dropout	Promotion	Repetition	Dropout	Grade 6	Grade 9	Grade 12
Chranouk	83.8	13.5	2.7	0.0	0.0	0.0	0.0	0.0	0.0	168	0	0
Dar	72.1	15.8	12.1	74.7	1.3	23.9	0.0	0.0	0.0	131	50	0
Kampong Hau	75.7	9.2	15.1	78.7	2.3	18.9	67.3	6.0	26.7	168	148	24
Phlov Tuk	63.5	16.0	20.4	0.0	0.0	0.0	0.0	0.0	0.0	36	0	0
Pou	78.1	12.5	9.4	51.2	0.0	48.8	0.0	0.0	0.0	88	0	0
Pralay Meas	64.5	22.9	12.7	0.0	0.0	0.0	0.0	0.0	0.0	64	0	0
Samraong Saen	66.4	17.6	16.1	0.0	0.0	0.0	0.0	0.0	0.0	30	0	0
Svay Rumpear	80.4	15.6	4.0	70.1	0.0	29.9	0.0	0.0	0.0	147	0	0
Trangel	75.0	16.5	8.5	0.0	0.0	0.0	0.0	0.0	0.0	128	0	0

13 Staff and Resources at the District

This chapter presents data from the District Information System, collected around the middle of 2009 unless otherwise specified.

13.1 District Councilors elected in 2009

Name	Sex	Year of Birth	Function	Phone
ឡៅ សាវីម	M	1954	Chairperson of The Council	097-987 314
ព្រំ ធីតា	F	1960	Councillor	092-810 739
អ៊ុន សារូ	M	1953	Councillor	012-524 289
តេង សារឿន	M	00-00-00	Councillor	012-718 509
គង់ គន	M	1943	Councillor	097-667 2337
ធីន ចេង	M	1961	Councillor	089-485 383
ខៀវ សារៀម	M	1972	Councillor	012-573 025
មាយ ស៊ីថន	M	1950	Councillor	089-927 275
មុក សុម៉ាលី	F	1950	Councillor	012-573 471
សុខ គាន	M	1938	Councillor	
ម៉ុំ ម៉ួល	M	1946	Councillor	
សួន សាគុណ	M	00-00-00	Councillor	
ហួត ស៊ីម	M	1975	Councillor	017-489 307
ជួ សំអុន	M	1972	Councillor	012-489 083
ញឹក សំអែល	M	1965	Councillor	092-970 967

13.2 Committees of the Council

Please note at the time of producing the district data books the composition of the committees was not known for all district councils and therefore data were not available for 13.2.1, 13.2.2, 13.2.3.

13.2.1 Technical Facilitation Committee

13.2.2 Women's and Children's Affairs Committee

13.2.3 Procurement Committee

13.3 Board of Governors

Name	Sex	DoB	Function	Salary Level	Body	Phone
ម៉ាន់ អ៊ានលី	M	1956	District Governor	២១.១	Medium Civil Servant	
ក្រុង សុផុន	M	1956	District Deputy Governor	២១.១	Medium Civil Servant	
ជា ម៉េង	F	1953	District Deputy Governor	២៣.៥	Medium Civil Servant	
ផៅ ស្រៀង	M	1969	District Deputy Governor	២១.៥	Secretary	

13.4 Offices under Sala Krong, Sala Srok and Sala Khan

Office Name	Chief		Deputy Chief		No. of Staff				Office Area (m2)	No of vehicle (public or program)	
					State		Contract				
	M	F	M	F	M	F	M	F		vehicle	moto
Adminnistration Office	0	0	1	0	1	2	0	0	0	0	0
Economy Office	0	0	0	0	1	2	0	0	0	0	0
Social Affair Office	0	0	1	0	1	1	0	0	0	0	0

13.5 Municipality/District/Khan line offices

Office Name	Chief		Deputy Chief		No. of Staff				Office Area (m2)	No of vehicle (public or program)	
					State		Contract				
	M	F	M	F	M	F	M	F		vehicle	moto
District/ Khan Military Subregion	1	0	2	0	15	0	0	0	Borrow	0	0
Planning Office	0	0	1	0	0	0	0	0	Borrow	0	0
Rural Development Office	1	0	0	0	0	0	0	0	Borrow	0	0
Women Affairs Office	0	1	0	2	0	0	0	0	Borrow	0	0
Environment Office	1	0	0	0	0	0	0	0	Borrow	0	0
Education Office	1	0	1	1	8	1	0	0	Borrow	0	0
Agriculture Office	1	0	1	0	0	0	1	0	Borrow	0	0
Social Affairs Office	0	1	1	0	0	1	1	0	Borrow	0	0
Culture Office	1	0	1	0	0	1	0	0	Borrow	0	0
Cult and Religion Office	1	0	0	0	0	0	0	0	Borrow	0	0
Finance Office	1	0	0	1	1	0	0	0	Borrow	0	0
Information Office	0	0	1	0	0	2	0	0	Borrow	0	0
Public Work Office	1	0	1	0	1	1	0	0	Borrow	0	0
Post Office	1	0	1	0	0	2	0	0	0	0	0
Lan Management Office	1	0	1	0	1	0	0	0	Borrow	0	0
Tax Unit	1	0	0	0	0	2	0	0	Borrow	0	0
Water Resources Office	0	0	0	0	0	0	0	1	Borrow	0	0

13.6 Properties and Equipment of District Administration

13.6.1 Buildings

Description	Unit	Number	Remark
Office building type			
- Concrete	building	1	
- Wood	building	0	
- Mixed	building	2	
Total floor space	m2		
- Concrete	m2	0	
- Wood	m2	0	
- Mixed	m2	592.22	
Building condition			
- Concrete	%	50	
- Wood	%	0	
- Mixed	%	80	
Office reserved land area	m2	4,818	
Total office land area	m2	14,113	

13.6.2 Means of Transport available at the District Administration

Description	Unit	Number	Remark
Vehicle (type, size and condition)	Vehicle	0	
Motorcycle (type, size and condition)	Motor	0	

13.6.3 Equipment in District Offices

Description	Unit	Number	Remark
Generator	per set	0	
Photocopy machine at the office	per set	0	
Private photocopy machine at the district town	place	0	
Telephone network (land line service)	network	0	
Fax (include Fax number)	per set	0	
Computer	per set	0	
Printer	per set	0	
Scanner	Per set	0	
Number of computers those can access Internet and email services in the municipality/ district/khan office (including the technical line offices (please provide the email address)	set	0	
Typewriters (including the technical line offices)	per set	0	
Staff of Municipality/district/khan office can use computer	person	2	

13.6.4 Equipment and facilities at the District Town

Description	Unit	Number	Remark
Availability of electricity at noon	Nr Hours	0	
Private internet and email services in the municipality/ district/khan town.	place	0	

13.7 Registered Revenue of the District Administration in 2008⁴

⁴ Please note that the data in this table are at best estimates. If the table appears blank it does not mean there is no revenue, just that the data have not been recorded/entered.

13.8 Services in the District

13.8.1 Public Sector Services

Type of Infrastructure/services	Unit	Number	
		Public	Private
Schools			
Pre-school	room	5	0
Primary School	room	145	0
Secondary school	room	19	0
High School	room	13	0
University	room		
Health			
Health post	place		
Health center	place	4	0
Referral Hospital	bed		

13.9 Civil Society Organizations active in the District

13.9.1 NGOs, Associations, Programs and Projects

Name	Abbr.	Sector Activities	No. of Target Communes	No. of Target Villages	Office in District
NA	ACLEDA	ឥណទាន	6	29	Yes
NA	Credit MFI	ឥណទាន	9	41	Yes

13.9.2 Political Parties active in the Municipality, District and Khan

Name	Abbr.	Office in District
Cambodian People Party	CPP	Yes
FUNCINPEC Party	FUNCINPEC	Yes
Human Rights Party	HRP	Yes
NRP	NRP	Yes
SAM RAINSY Party	Sam Rainsy Party	Yes

13.10 Private Sector Organizations

13.10.1 Registered Companies in 2008, by District

On private sector at commune and/or district level	KCH	Kampong Chhnang	Boribor	Roleap Ear	Teuk Phos	Kapong Leng	Choul Kiri	Kampong Tralach	Samaky Meanchey
Businesses and Companies									
Number of registered agricultural enterprises (except family farms)	1	0	0	1	0	0	0	0	0
Number of registered shops, restaurants, transporters and other services	1,398	863	150	169	78	0	0	138	0
Number of manufacturing companies	9	2	0	3	0	0	0	3	1
Number of registered forestry enterprises	34	0	3	16	3	5	0	6	1
Number of registered mining companies (Rock)	3	0	0	2	0	0	1	0	0
Number of financial institutions	n/a	n/a	n/a	n/a	n/a	n/a	n/a	n/a	n/a
Number of other commercial institutions	6	1	0	1	0	0	0	3	1
Estimated number of informal enterprises (not registered)	n/a	n/a	n/a	n/a	n/a	n/a	n/a	n/a	n/a
Employment									
Number of people employed in 2008 by companies or any other enterprises	8,195	1,448	558	2,032	425	178	107	2,039	1,408
Investment									
Amount invested in 2008 by private sector (\$)	n/a	n/a	n/a	n/a	n/a	n/a	n/a	n/a	n/a
Markets									
Number of markets, operating at least weekly	9	2	3	0	1	1	0	2	0

Note: These data are not comprehensive as different companies and business are registered with different departments and not all departments were able or willing to provide detailed information. The number of informal enterprises reflects a rough estimate, made at provincial level and could not be verified.

Source: Unofficially collected at Provincial Level

13.10.2 Farmers in 2008, by District

Credit	KCH	Kampong Chhnang	Boribor	Roleap Ear	Teuk Phos	Kapong Leng	Choul Kiri	Kampong Tralach	Samaky Meanchey
Volume of credit provided to farmers in 2008 (\$)	n/a	n/a	n/a	n/a	n/a	n/a	n/a	n/a	n/a
Number of farmers receiving credit in 2008	n/a	n/a	n/a	n/a	n/a	n/a	n/a	n/a	
Volume of credit provided to companies in 2008 (\$)	n/a	n/a	n/a	n/a	n/a	n/a	n/a	n/a	n/a

Note: Please note that these data are not necessarily complete or correct. The data are derived from government agencies at provincial and district level which used different recording systems, did not always have complete data or were, sometimes, less than willing to share their data.

Source: Unofficially collected at Provincial Level

SECTION E: POVERTY DATA

14 Data on Poverty

14.1 Predicted Poverty Rates for 2009, by commune

The **Predicted Family Poverty Rate** is based on a statistical model (robust multilevel mixed effect regression) at village level developed by the NCDD M&E Unit and uses CDB data for making an estimate of the predicted poverty rate (this is: *the portion of total families in the district or commune who are expected to be poor*) for the following year using current year data.

The basis for this predicted poverty rate also uses IDPoor (a project of the Ministry of Planning with technical assistance provided by GTZ) data

Commune	2004	2009
Chranouk	43.90%	38.10%
Dar	44.20%	35.70%
Kampong Hau	42.70%	36.50%
Phlov Tuk	45.90%	44.20%
Pou	42.20%	39.20%
Pralay Meas	43.30%	41.80%
Samraong Saen	47.90%	46.90%
Svay Rumphear	44.60%	38.70%
Trangel	40.10%	33.20%

14.2 Poverty data from survey

14.2.1 Identification of Poor Households Program (IDPoor)

The Ministry of Planning IDPoor Program has developed standardized Procedures for Identification of Poor Households in rural areas. These Procedures are implemented using a participatory and consultative process by sub-national government structures and community representatives.

The IDPoor Program is managed by the Ministry of Planning (MOP), in cooperation with the Ministry of Interior's Department of Local Administration (DOLA). The program is supported by the Federal Republic of Germany, with technical assistance provided by German Technical Cooperation (GTZ). In 2009, AusAID also provided funding support to the Program.

Objective

The IDPoor Program aims to implement the Procedures for Identification of Poor Households in rural areas as widely as possible, in order to provide data on the level of poverty of areas and households that can be used by a large range of institutions and organizations for targeting services and development assistance to poor areas and poor households.

Coverage: During 2007, 2008 and 2009 the IDPoor Procedures have been implemented in 18 provinces (with partial or complete coverage), covering a total of around 7000 rural villages. The MOP and a number of NGO partners who are Health Equity Fund Operators have collaborated in collecting this data from different areas.

Categorization: Identified poor households are classified under two poverty categories: Poor Level 1 (very poor), and Poor Level 2 (poor). Households are classified based on data collected using a standard questionnaire, together with consideration by villagers of these households' special circumstances.

Further information: Please go to the IDPoor Program webpage at www.mop.gov.kh/Projects/IDPoor/tabid/154/Default.aspx

This District has not yet been covered by IDPoor